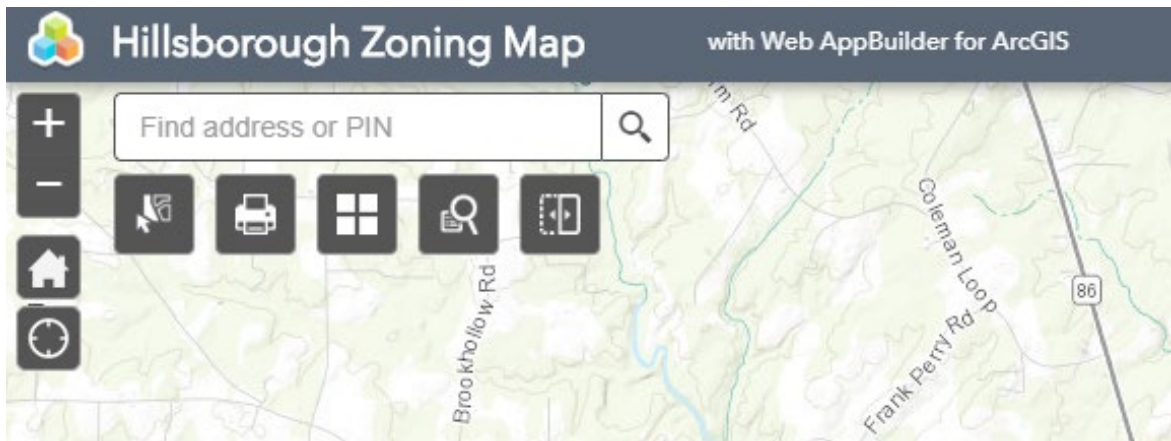


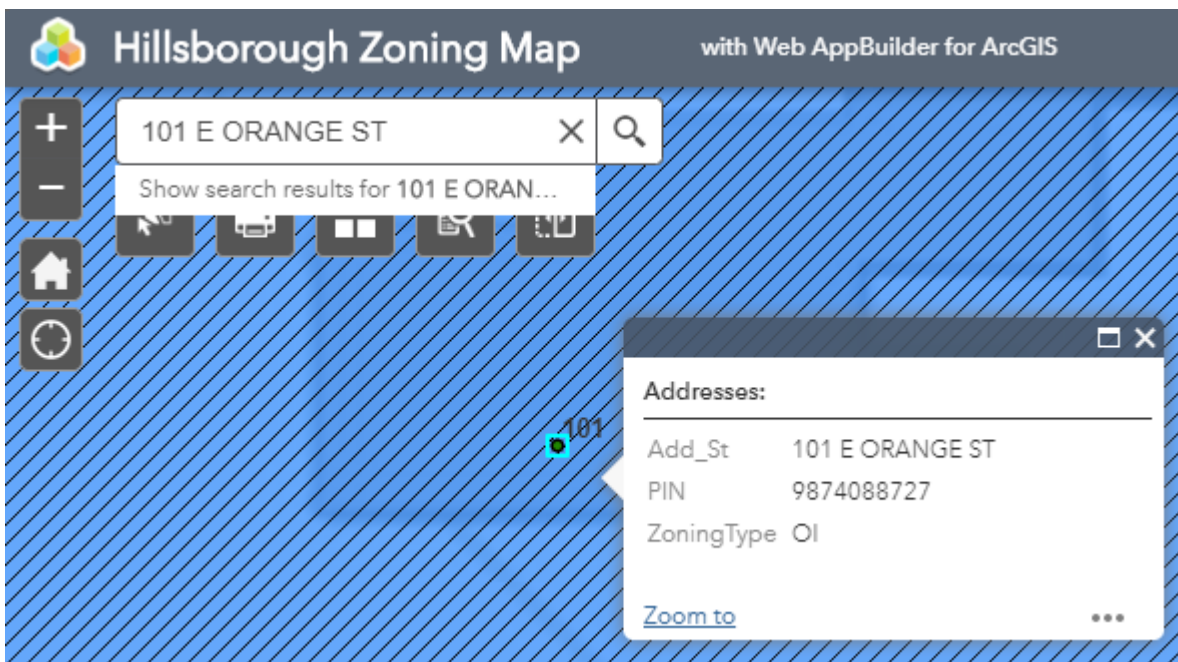
Introduction to Using Interactive Hillsborough Zoning Map

START HERE

The search bar allows you to find information on specific properties. Search by street address or the property index number — PIN — to find the zoning information for the property.

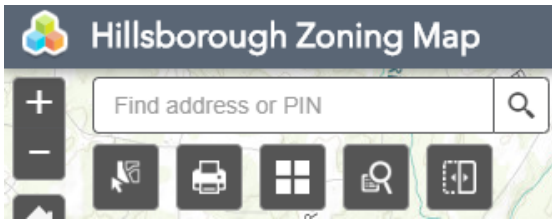


When using the search bar: Once you've selected the property of inquiry, the map will zoom to the property and display property specific information, including the zoning district.

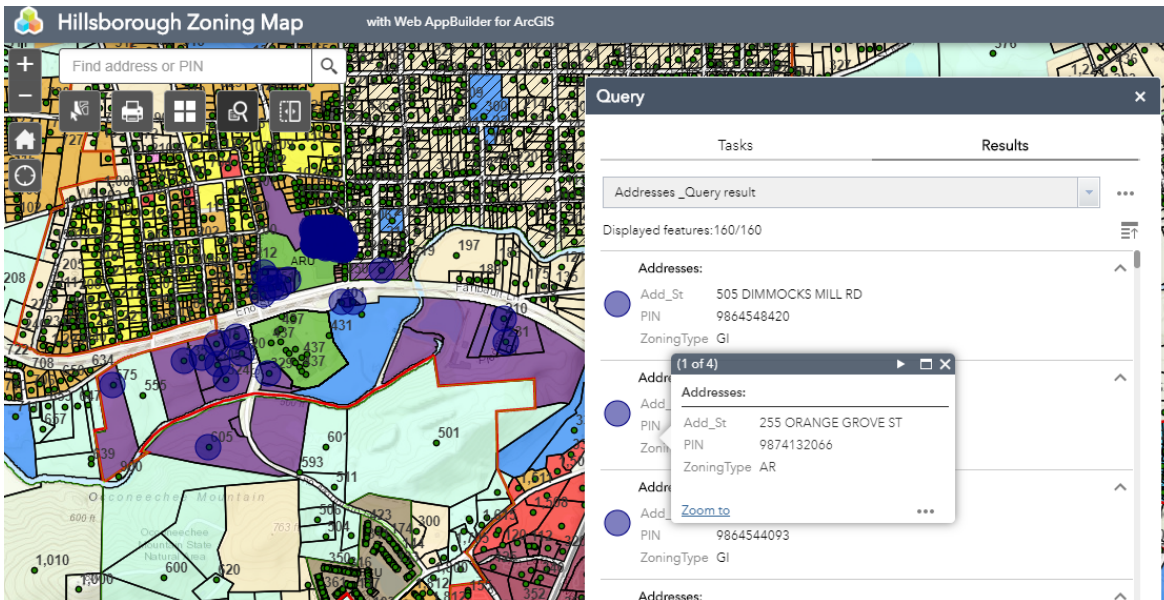


EXPLORE HERE

Using the query tool (magnifying glass with map behind it — fourth button under the search bar), you can find all properties within town that are assigned to a particular zoning district.

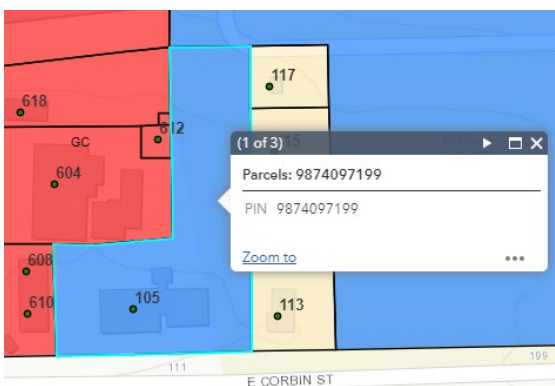


Once you have input your query request, the query box will provide a list of properties that exhibit the zoning district specified. The map also will display colored circles that you can use to explore the identified properties. The example in the image below queried properties zoned "GI, General Industrial."



The query box also may be moved for display preference by clicking and dragging it from its title bar.

You also can explore simply by zooming in and out of the map and clicking on a property.



For more information related to setback requirements for each zoning district, please refer to the Hillsborough Unified Development Ordinance, [Section 6.3.1](#).