



Illicit Discharge and Connection

Town of Hillsborough Information Sheet

Stormwater Runoff Pollution

North Carolina's No. 1 water pollution problem is stormwater runoff pollution. As stormwater runoff flows across exposed soil or impervious surfaces — such as pavement or rooftops — it picks up various pollutants. These include oil, grease, excess fertilizer, pet waste, various chemicals, trash and sediment. Polluted stormwater flows down our storm drains and through our ditches, where it is discharged untreated into our streams, rivers and lakes. Stormwater runoff pollution can adversely affect aquatic ecosystems and our drinking water supplies.



Municipal Separate Storm Sewer System



The Town of Hillsborough owns and operates a municipal separate storm sewer system or MS4. The town's system includes storm drains, catch basins, pipes, open channels, ditches, swales, as well as other human-made and natural

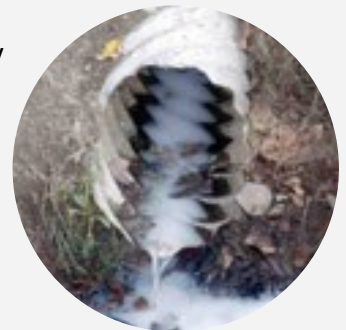
stormwater runoff conveyances.

The town is permitted to discharge stormwater runoff from its system to local creeks and the Eno River, pursuant to its Phase 2 National Pollutant Discharge Elimination System (NPDES) stormwater permit. The NPDES stormwater program is a federal requirement administered by the North Carolina Department of Environmental Quality.



Illegal Dumping and Connections

Dumping, discharging, disposing or placing any substance other than stormwater into the town's stormwater system is not only bad for the environment, it is also illegal.



It also is illegal to connect pipes to the town's stormwater system without approval. This includes piping non-stormwater discharges into catch basins, storm drains, or even ditches. As part of its stormwater management program, the town is looking for illicit discharges and connections so they can be eliminated. If found, the property owner will be notified. If the issue is not corrected, the owner could face civil penalties up to \$5,000.



What is an Illicit Discharge or Connection?

An illicit discharge into the stormwater system essentially is the placement of any substance into the system that may be toxic to human, animal or plant life or any item that is flammable, explosive or corrosive. More simply, it is any discharge that adversely affects the North Carolina classification of the stream into which the discharge flows.

Illicit or illegal discharge may include the following:

- Dumping of oil, anti-freeze, chemicals, garbage, paint or cleaning fluids.
- Untreated animal waste.
- Commercial car washes.
- Industrial discharges.
- Contaminated foundation drains.
- Wash waters from commercial and industrial activities.
- Sanitary sewer discharges.
- Septic tank discharges.
- Washing machine discharges.
- Chlorinated backwash or the draining of swimming pools.

An illicit connection is any connection to the stormwater collection system that allows the discharge of non-stormwater (as described above), even if the connection existed previously.



HILLSBOROUGH
STORMWATER AND
ENVIRONMENTAL SERVICES

You Can Help!

If you think you've found an illicit discharge or if you see indications of illicit discharges in stormwater runoff, then please contact the Stormwater and Environmental Services Division.

Signs of an illicit discharge include:

- Unusual color or cloudiness.
- Strong pungent or musty odor.
- Floating debris.
- Surface scum or foam.
- Oil sheen.
- Excessive algae.
- Storm pipes flowing in dry weather.



The stormwater program's mission is to protect the water quality of the Eno River, which is Hillsborough's drinking water source.

Stormwater and Environmental Services Division

101 E. Orange St.
PO Box 429, Hillsborough, NC 27278

919-296-9622 | heather.fisher@hillsboroughnc.gov

