



Agenda Abstract

BOARD OF COMMISSIONERS

Meeting Date:	Nov. 28, 2022
Department:	Public Space/Sustainability
Agenda Section:	Regular
Public hearing:	No
Date of public hearing:	N/A

PRESENTER/INFORMATION CONTACT

Stephanie Trueblood, Public Space Manager

ITEM TO BE CONSIDERED

Subject: Update on Train Station Design

Attachments:

Presentation

Summary:

The Town of Hillsborough has contracted Clearscapes to lead the design team for the future train station. Clearscapes has developed a schematic design and early architectural. Mary Coneley, project manager and architect for Clearscapes, will share the progress thus far and take questions and comments.

The design supports the town's goal for sustainable, connected, development that enhances the quality of life for the Hillsborough community and its visitors. The project consists of three primary areas of focus: a new 8,000 sf building and associated site improvements, platforms and vertical circulation serving the adjacent train tracks, and a greenway that connects the site to downtown Hillsborough. The project will focus on sustainability through site and building design that incorporates efficient and renewable energy systems, daylighting, stormwater management, and green roof technologies.

The site design takes advantage of existing features by locating the building and vehicular parking on cleared and level ground to preserve areas of existing vegetation and utilize the natural drainage slope for on-site stormwater treatment. Oriented perpendicular to a new entry drive, the front face of the building and site define an urban edge and set the stage for future mixed-use, transit-oriented development. Facilities are provided for both train station and Town of Hillsborough operations, including a new board room, public gathering space, and offices. Interior and exterior spaces are configured to promote natural daylighting, access to train platforms, and views of the surrounding site. Compositionally, the building is organized of three simple volumes that project above a wide, horizontal canopy, signaling the main programmatic components – station, board room, and offices – under one roof.

Financial impacts:

None

Staff recommendation and comments:

None

Action requested:
Receive update

HILLSBOROUGH TRAIN STATION

existing conditions



program



budget



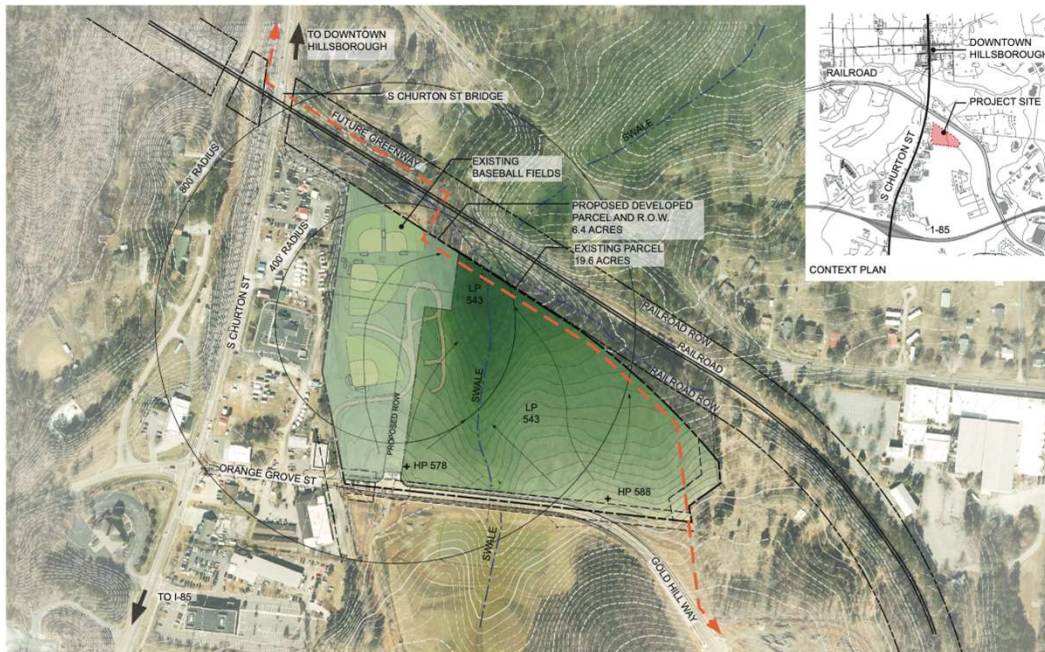
values



regulations



1

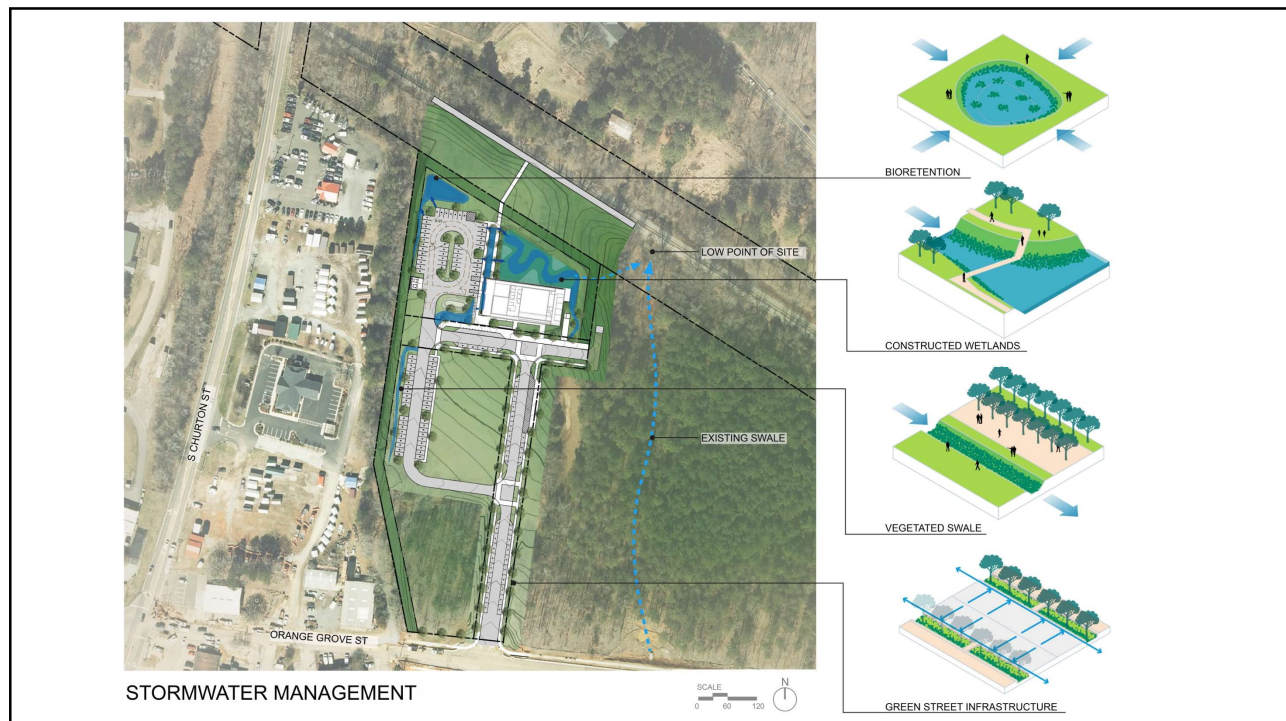


SITE ANALYSIS

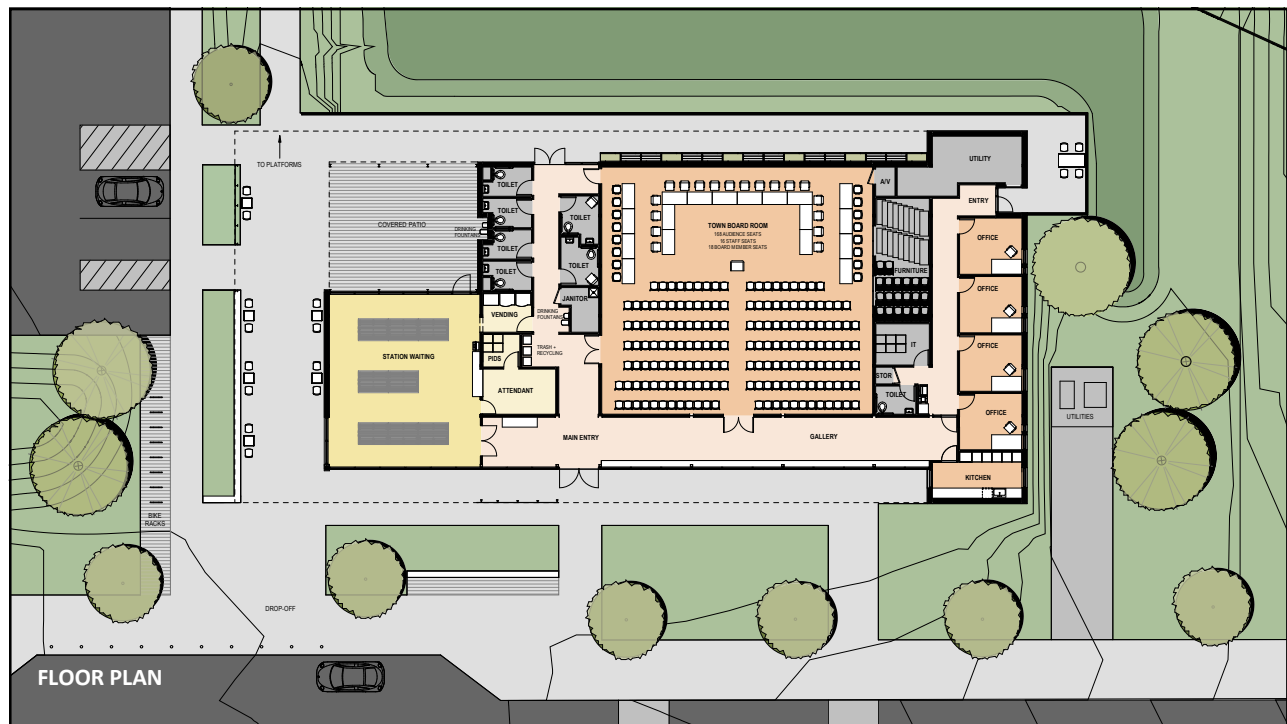
2



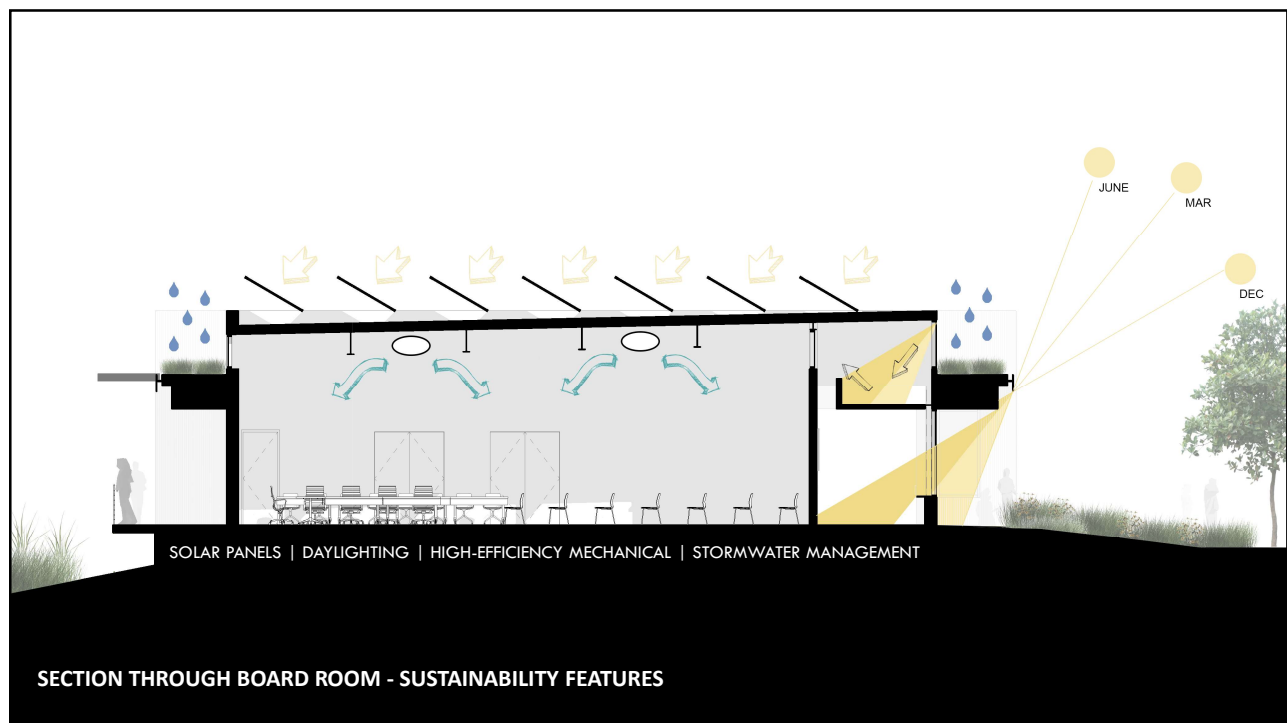
3



4



5



6



7



8



9



10