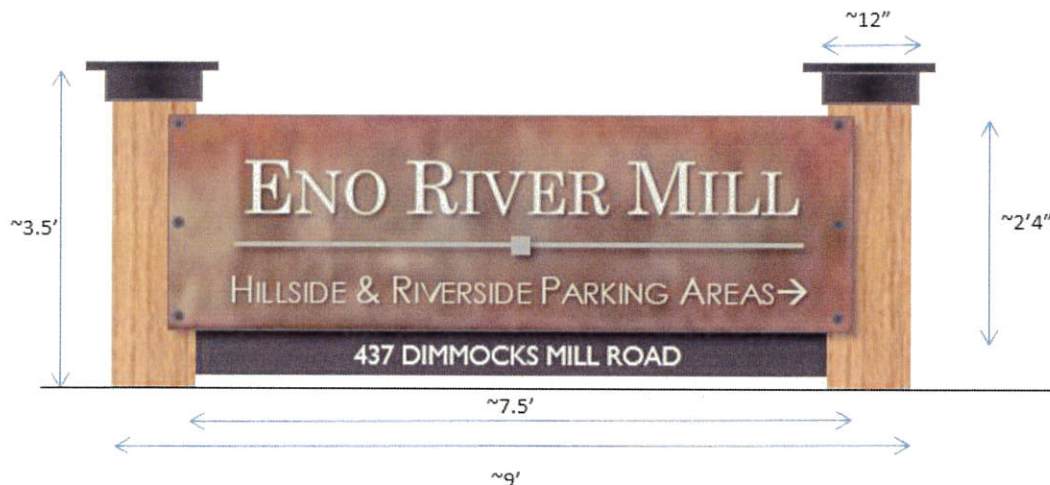


Narrative:

We propose to install two monumental signs near the two Eno River Mill driveways. The signs will be a combination of wood and metal, and will direct visitors to the various parking lots on the Eno River Mill campus. Each sign will have a mulched area around it and small dwarf nandina firepower bushes will be planted later in the fall.

In the case of the Eno Mountain Road sign, we will have to remove a cedar tree. These are mature cedar trees that are at the end of their expected life cycle. We propose to plant another tree on the site (marked on the provided plan).

The smaller wayfinding signs will be posted around the site near the parking lots so visitors can more easily find the parking lots. Our preference is to have painted metal signs with white lettering. Our sign shop tells us that will be the most durable. We also believe that the metal signs are more in keeping with the industrial setting.



- HISTORIC MILL COLUMN (IF AVAILABLE) FOR PIERS OR TREATED WOOD TIMBERS, 12" X 12".
- PIERS WILL HAVE A CUSTOM METAL CAP, PAINTED BLACK
- STANDOFF BRUSHED SILVER LETTERS FOR MILL NAME (ENO RIVER MILL), 8" TALL, READABLE FROM 350' AWAY.
- CHARCOAL GREY STEEL PLATES WITH WHITE LETTERING FOR MAJOR PARKING LOTS. LETTERS ARE 3" TALL, READABLE FROM 100' AWAY.

THIS SIGN COMBINES ELEMENTS FROM THE MILL (WOOD AND METAL) TO HIGHLIGHT THE HISTORIC AND INDUSTRIAL FEEL OF THE MILL, BUT IT ALSO USES SOME MODERN MATERIALS AND FONTS TO INCORPORATE THE FEEL OF OUR UPDATES TO THE MILL.

THE WEATHERING STEEL ECHOES THE LOOK OF SOME OF THE BRIDGES ON RIVERWALK, ANCHORING THE MILL INTO THE SURROUNDING AREA STYLISTICALLY.

1/4" COR-TEN WEATHERING STEEL MOUNTED FLUSH TO WOOD COLUMNS ON BOTH SIDES. 1/4" ALUMINUM LETTERS WITH BRUSHED ALUMINUM VERTICAL GRAIN FINISH. MOUNTED WITH 1/2" PROJECTION TO STEEL PANEL.

#### SIGN TYPE/SCALE

SIGN TYPE 1.0

SCALE: 1/2" = 1'-0"

#### SPECIFICATIONS

QTY (1) DOUBLE-FACED SIGN.

SQ FT = 20

3.5' high

#### GRAPHICS REFERENCE NO.

☐ APPROVED AS DRAWN ☐ APPROVED AS NOTED  
☐ REJECTED-REVISE AND RESUBMIT  
 BY: (TITLE) \_\_\_\_\_  
 DATE: \_\_\_\_\_

#### DESIGNED FOR:

ENO RIVER MILL  
 HILLSBOROUGH, NC

#### DRAWING NO.

17243-M

#### DATE

05-25-17

#### REVISED

#### DESIGNED BY

BP

**SIGNAGE INDUSTRIES**

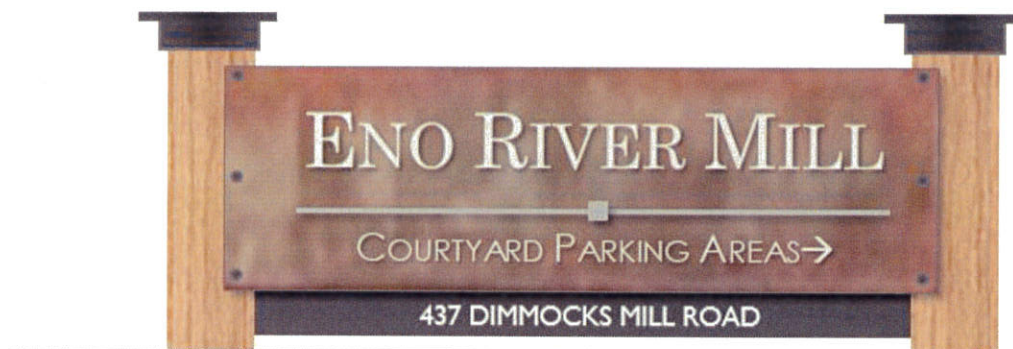
www.signageindustries.com

"You Imagine It. We Build It."

Manufacturing signs since 1979

P.O. BOX 4879 ARCHDALE, NC 27263

TEL 336-434-4126 FAX 336-434-3616



¼" COR-TEN WEATHERING STEEL  
MOUNTED FLUSH TO WOOD  
COLUMNS ON BOTH SIDES. ¼"  
ALUMINUM LETTERS WITH  
BRUSHED ALUMINUM VERTICAL  
GRAIN FINISH. MOUNTED WITH ½"  
PROJECTION TO STEEL PANEL.

#### SIGN TYPE/SCALE

SIGN TYPE 2.0

SCALE: 1/2" = 1'-0"

#### SPECIFICATIONS

QTY (1) SINGLE-FACED SIGN.

SQ FT = 20

3.5' high

#### GRAPHICS REFERENCE NO.

☐ APPROVED AS DRAWN ☐ APPROVED AS NOTED  
☐ REJECTED-REVISE AND RESUBMIT  
BY: (TITLE) \_\_\_\_\_  
DATE: \_\_\_\_\_

#### DESIGNED FOR:

ENO RIVER MILL  
HILLSBOROUGH, NC

#### DRAWING NO. DATE

17243-M

05-25-17

#### REVISED

#### DESIGNED BY

BP

**SIGNAGE  
INDUSTRIES**

www.signageindustries.com

"You Imagine It. We Build It."

Manufacturing signs since 1979

P.O. BOX 4879 ARCHDALE, NC 27263

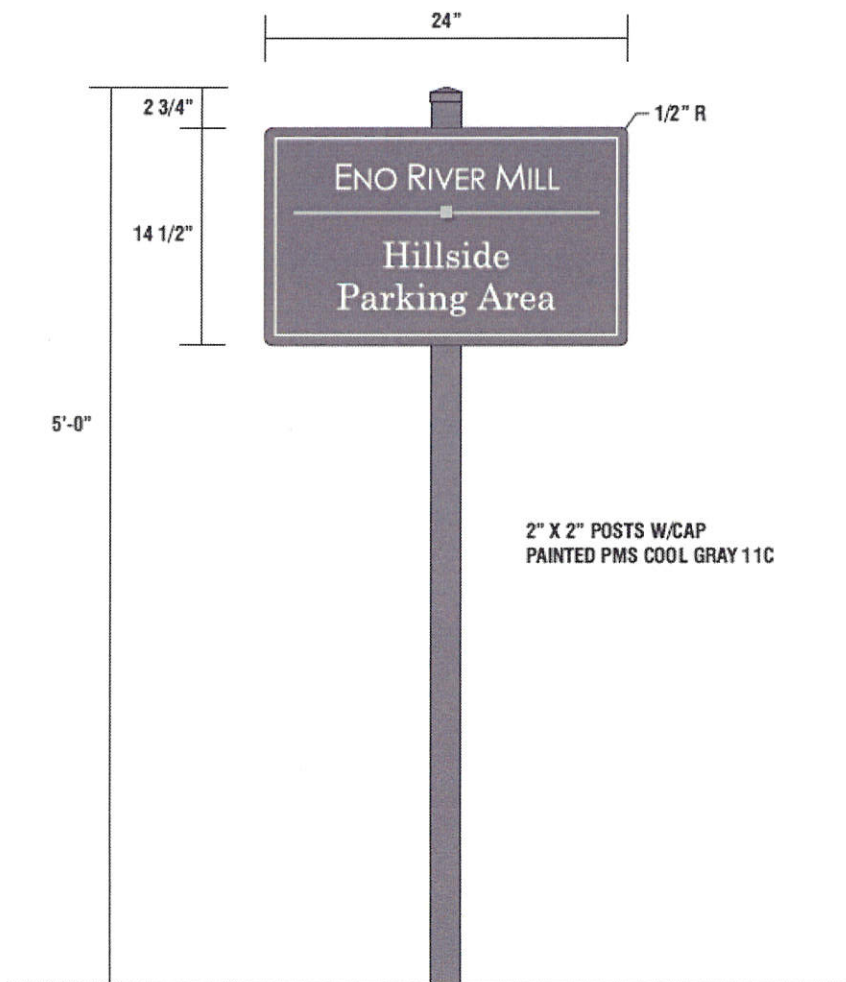
TEL 336-434-4126 FAX 336-434-3616



ENO RIVER MILL  
Upper Courtyard  
Parking Area

ENO RIVER MILL  
Lower Courtyard  
Parking Area

ENO RIVER MILL  
Riverside  
Parking Area



# SIGN TYPE/SCALE

SIGN TYPE 3.0

SCALE: 1" = 1'-0"

## SPECIFICATIONS

QTY (4) .090 ALUMINUM POSTS WITH 3M DIGITAL PRINT APPLIED FIRST SURFACE. PANEL WILL BE PAINTED PMS COOL GRAY 11C ON BACK SIDE. PANEL WILL MOUNT FLUSH TO 2" X 2" ALUMINUM POSTS. \*

2.427 each

Exempt from zoning  
permit review  
per 6.18.4.7

## GRAPHICS REFERENCE NO.

☐ APPROVED AS DRAWN ☐ APPROVED AS NOTED  
☐ REJECTED-REVISE AND RESUBMIT  
BY: (TITLE) \_\_\_\_\_  
DATE: \_\_\_\_\_

## DESIGNED FOR:

ENO RIVER MILL  
HILLSBOROUGH, NC

## DRAWING NO.

17243-M

## DATE

05-25-17

## REVISED

## DESIGNED BY

BP

**SIGNAGE  
INDUSTRIES**

www.signageindustries.com

"You Imagine It. We Build It."

Manufacturing signs since 1979

P.O. BOX 4879 ARCHDALE, NC 27263

TEL 336-434-4126 FAX 336-434-3616

PROPOSED LOCATION  
"3.0" SIGN

(Hillside Parking Area)

PROPOSED LOCATION  
"1.0" SIGN  
(Located 10' from public right of way)

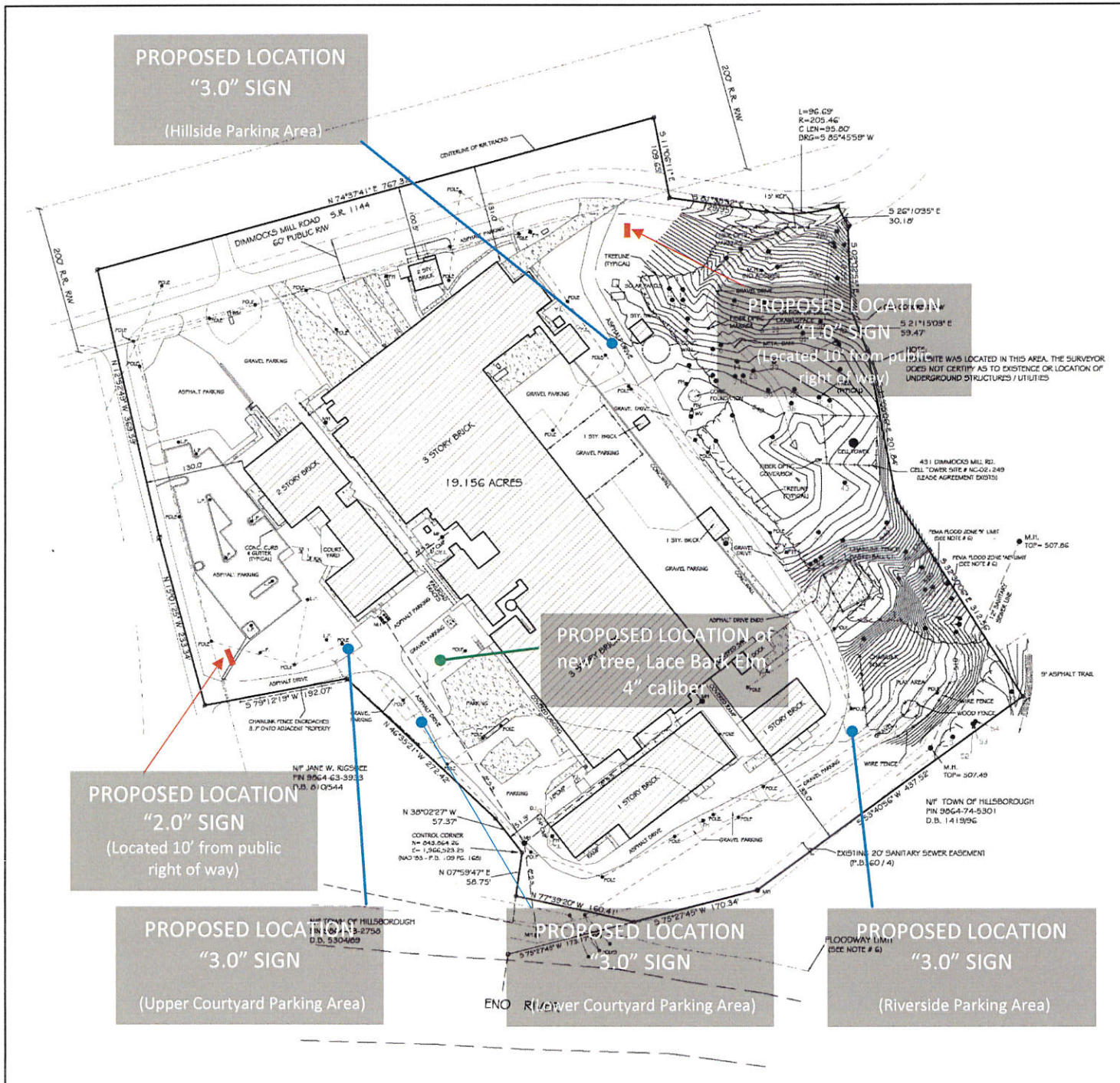
PROPOSED LOCATION of  
new tree, Lace Bark Elm  
4" caliber

PROPOSED LOCATION  
"2.0" SIGN  
(Located 10' from public right of way)

PROPOSED LOCATION  
"3.0" SIGN  
(Upper Courtyard Parking Area)

PROPOSED LOCATION  
"3.0" SIGN  
(Lower Courtyard Parking Area)

PROPOSED LOCATION  
"3.0" SIGN  
(Riverside Parking Area)







PROPOSED "2.0" SIGN  
(Located 10' from public  
right of way)

ENO RIVER MILL

COURTYARD PARKING AREAS →

437 DIMMOCKS MILL ROAD





PROPOSED "1.0" SIGN  
(Located 10' from public  
right of way)