



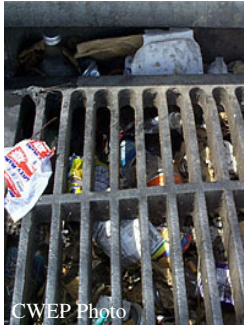
# Town of Hillsborough Stormwater Management Program



## Fact Sheet:

## Illicit Discharge and Connections

### Did You Know...



CWEP Photo

*That North Carolina's number one water pollution problem is Stormwater Runoff?*

As stormwater flows across impervious surfaces or exposed soil, it picks up various pollutants, such as oil & grease, excess nutrients, bacteria, trash and sediment. Polluted stormwater flows down our storm drains and through our ditches where it is discharged, UNTREATED, into our streams, rivers, and lakes. Stormwater runoff pollution can adversely impact aquatic ecosystems and our drinking water supplies.



CWEP Photo

### Did You Also Know...

That the Town of Hillsborough's stormwater system includes storm drains, catch basins, pipes, open channels, ditches, swales, as well as other man-made and natural stormwater runoff conveyances. Dumping, discharging, disposing or placing ANY substance other than stormwater into this system is not only not only bad for the environment, it is ILLEGAL!



NCDOT Photo

### It is also illegal...

To connect pipes to the stormwater system without approval. This includes piping non-stormwater discharges into catch basins, storm drains, or even ditches. As part of its stormwater management program, the Town is looking for illicit discharges and connections so that they can be eliminated. If found, the property owner will be notified and if it is not corrected the owner could face civil penalties up to \$5,000!



## What is an Illicit Discharge or Connection?

Illicit Discharges into the stormwater system essentially means placing any substance into the system that may be toxic to human, animal or plant life; or something that is flammable, explosive or corrosive; or more simply any discharge that adversely affects the State of North Carolina classification of the stream into which the discharge flows.

Illicit or illegal discharge may include but are not limited to the following:

- ⇒ **Dumping of oil, anti-freeze, chemicals, garbage, paint or cleaning fluids;**
- ⇒ **Untreated animal waste;**
- ⇒ **Commercial car washes;**
- ⇒ **Industrial discharges;**
- ⇒ **Contaminated foundation drains;**
- ⇒ **Wash waters from commercial and industrial activities;**
- ⇒ **Sanitary sewer discharges;**
- ⇒ **Septic tank discharges;**
- ⇒ **Washing machine discharges;**
- ⇒ **Chlorinated backwash or draining swimming pools;**

An illicit connection is ANY connection to the stormwater collection system which allows the discharge of non-stormwater (as described above), even if the connection existed previously.

## You Can Help!

If you think you've found an illicit discharge or see indications of illicit discharges in stormwater runoff such as:

- ◆ *Unusual color or cloudiness;*
- ◆ *Strong pungent or musty odor;*
- ◆ *Floating debris;*
- ◆ *Surface scum or foam;*
- ◆ *Oil Sheen;*
- ◆ *Excessive Algae;*
- ◆ *Storm pipes flowing in dry weather;*

Then Please contact the Town's Stormwater Department. To Report a suspected illicit discharge into our storm drainage system call (919) 245-2588.



### Town of Hillsborough's Stormwater Program

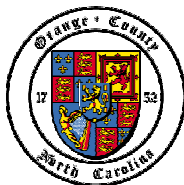
The Town of Hillsborough is permitted to discharge stormwater to creeks and the Eno River under its Phase 2 stormwater permit from the EPA's National Pollutant Discharge Elimination System. Stormwater is conveyed to these creeks and the Eno River through stormwater pipes, open channels/ditches, and as over land flow. Businesses and residences discharging to the Town's stormwater system must also comply with the Town's stormwater permit.

The stormwater management program operates as a division of the Town of Hillsborough Public Works Department but is coordinated by Orange County. The mission of the stormwater program is to:

- Protect the public and the ecosystem's health and safety.
- Address stormwater quality and quantity concerns.
- Meet or exceed federal and state mandates regarding stormwater.

Visit us online at [http://www.ci.hillsborough.nc.us/stormwater\\_management.asp](http://www.ci.hillsborough.nc.us/stormwater_management.asp)

#### For More Information Contact:



Terry Hackett, Stormwater Resource Officer  
Erosion Control Division  
Orange County Planning & Inspections Dept.  
306-F Revere Road, P.O. Box 8181  
Hillsborough, NC 27278  
e-mail: [thackett@co.orange.nc.us](mailto:thackett@co.orange.nc.us)  
phone: (919) 245-2588