



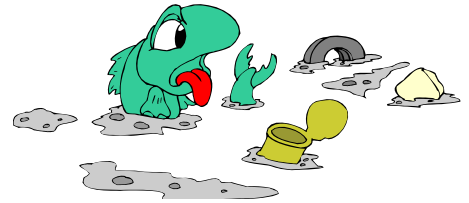
Don't Go Down the Drain

Town of Hillsborough Information Sheet

Don't let your business and its profits go down the drain — the storm drain that is!

Stormwater Runoff Pollution

As stormwater runoff flows across exposed soil or impervious surfaces — such as pavement or rooftops — it picks up various pollutants. Polluted stormwater flows down our storm drains and through our ditches, where it is discharged untreated into our streams, rivers and lakes. And that can cost your business money!



It's Illegal

Stormwater runoff pollution is bad for the environment, but it is also illegal to dump or discharge substances directly to a storm drain or ditch.



In fact, it is illegal to dump, discharge or even store substances in a manner that allows contaminated stormwater to reach the storm drainage system or a nearby surface water. Doing so is a violation of the Town of Hillsborough Illicit Discharge Ordinance and could result in fines, civil penalties and significant cleanup costs.

Proper Disposal

None of the following should be disposed of in a manner that allows it to reach a storm drain or ditch: paints, paint thinners, oil, grease, cleaning compounds, pesticides, herbicides, wash water and any other chemical.



These substances must be disposed of in accordance with applicable regulations. Orange County Solid Waste can assist with proper disposal of these substances.

Yard Waste

Yard waste such as grass clippings and leaves can also become stormwater pollutants. Grass clippings and leaves should not be blown into storm drains because they can clog the stormwater drainage system and cause flooding.



Grass clippings and leaves also break down and release excess nutrients (nitrogen and phosphorous) into the stormwater runoff. Excess nutrients cause dangerous algal blooms in local waterways that can harm fish and pose human health risks.

Trash and Litter

Allowing trash and litter to accumulate on your business property is a violation of the town's solid waste code. Accumulated trash and litter can also become stormwater runoff pollution if allowed to mix with stormwater. Not only is this a potential violation, but studies indicate trash and litter cause businesses to lose customers and revenue.



But You Can Prevent Your Profits from Going Down the Storm Drain!

Just follow the eight steps on the following page to help your business minimize stormwater runoff pollution. Doing so will help keep your business in the black and our local waterways in the blue.

How to Keep Your Business from Going Down the Drain

1. Keep all outside areas free of litter, cigarette butts, and leaves.
2. Sweep up litter instead of hosing it into storm drains; dispose of litter in appropriate receptacles.
3. Cover trash cans and dumpsters; don't overfill them.
4. Prevent wash water and wastes — such as used oil, grease, and chemicals — from entering storm drains. Never dump anything into a storm drain.
5. Cover all materials stored outside to prevent them from washing into storm drains. Do not store fertilizers, pesticides, or other hazardous chemicals outside in open containers.
6. Report chemical spills to the appropriate authorities and train staff members to use a spill kit.
7. Minimize the use of pesticides and herbicides (insect and weed killer); they are deadly to fish, birds and other wildlife.
8. Consider installing a rain garden or other stormwater best management practice at your place of business; rain gardens help clean stormwater by allowing it to soak into the ground.



HILLSBOROUGH STORMWATER AND ENVIRONMENTAL SERVICES

The Town of Hillsborough is permitted to discharge stormwater runoff to creeks and the Eno River, pursuant to its Phase 2 National Pollutant Discharge Elimination System (NPDES) stormwater permit.

The NPDES stormwater program is a federal requirement administered by the North Carolina Department of Environmental Quality. All businesses and residences must also comply with provisions of the town's Phase 2 NPDES stormwater permit.

The mission of the stormwater program is to reduce the amount of stormwater runoff pollution entering the town's municipal separate stormwater sewer system (MS4). In simpler words, the mission is to improve the water quality of the Eno River.

For more information, visit the program's pages online at www.hillsboroughnc.gov/stormwater.



Hillsborough's stormwater program protects the water quality of the Eno River, which is the town's source for drinking water.

Stormwater and Environmental Services Division

101 E. Orange St.
PO Box 429, Hillsborough, NC 27278

919-296-9622 | heather.fisher@hillsboroughnc.gov

