



2021 Town of Hillsborough Community Survey GIS Maps

Presented to the Town of Hillsborough
North Carolina,
March 2022

Interpreting the Maps

The maps on the following pages show the mean ratings for several questions on the survey by Census Block Group. If all areas on a map are the same color, then residents generally feel the same about that issue regardless of the location of their home.

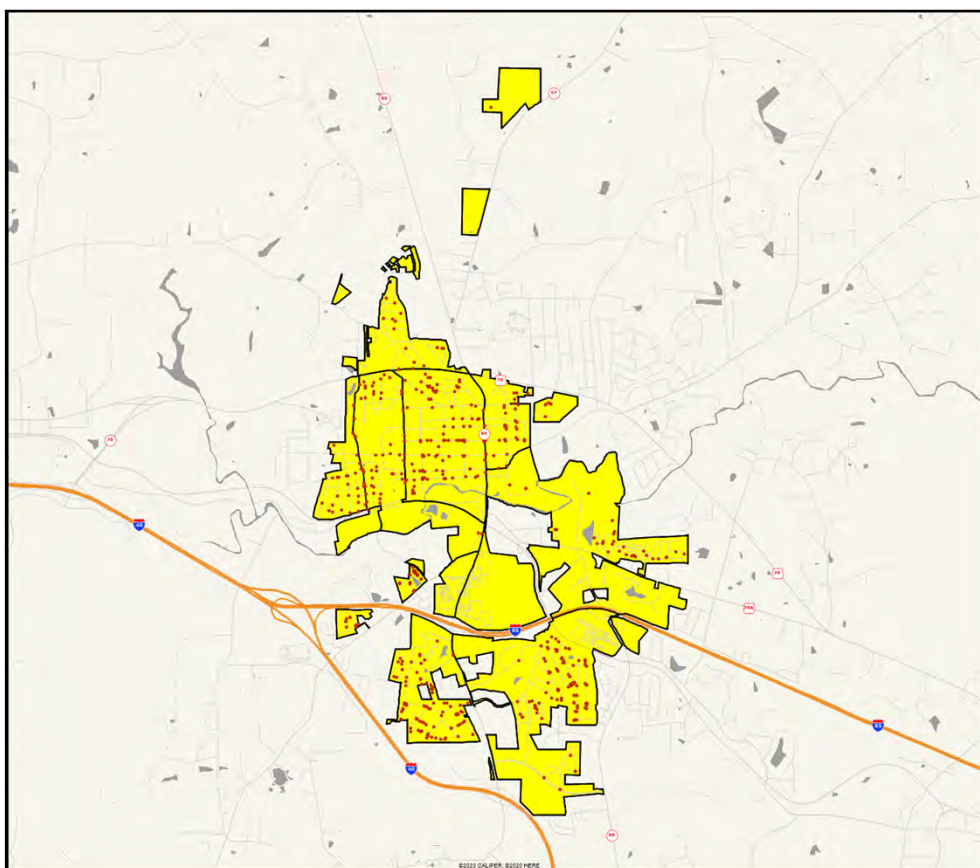
When reading the maps, please use the following color scheme as a guide:

- **DARK/LIGHT BLUE** shades indicate POSITIVE ratings. Shades of blue generally indicate satisfaction with a service, ratings of “excellent” or “good” and ratings of “very safe” or “safe.”
- **OFF-WHITE** shades indicate NEUTRAL ratings. Shades of neutral generally indicate that residents thought the quality of service delivery is adequate.
- **ORANGE/RED** shades indicate NEGATIVE ratings. Shades of orange/red generally indicate dissatisfaction with a service, ratings of “below average” or “poor” and ratings of “unsafe” or “very unsafe.”

Location of Respondents

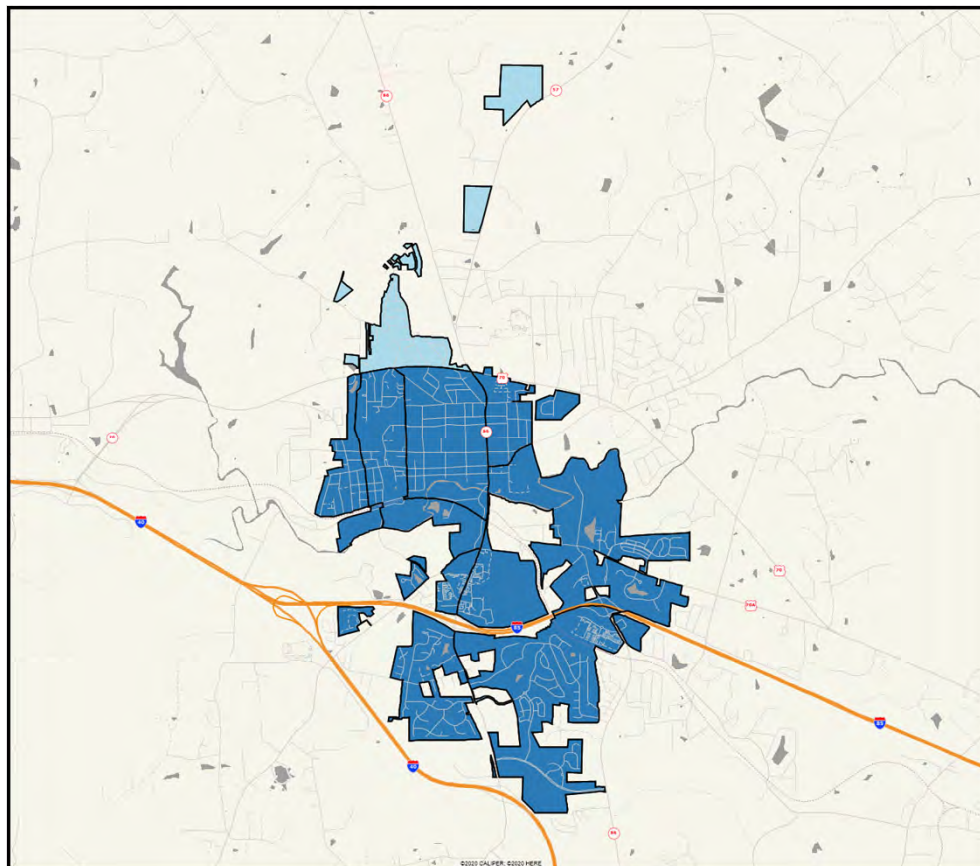
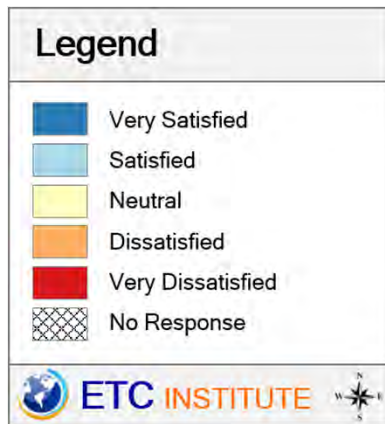
(Boundaries Show Census Block Groups)

Hillsborough, NC



Q1-1. Overall quality of police protection

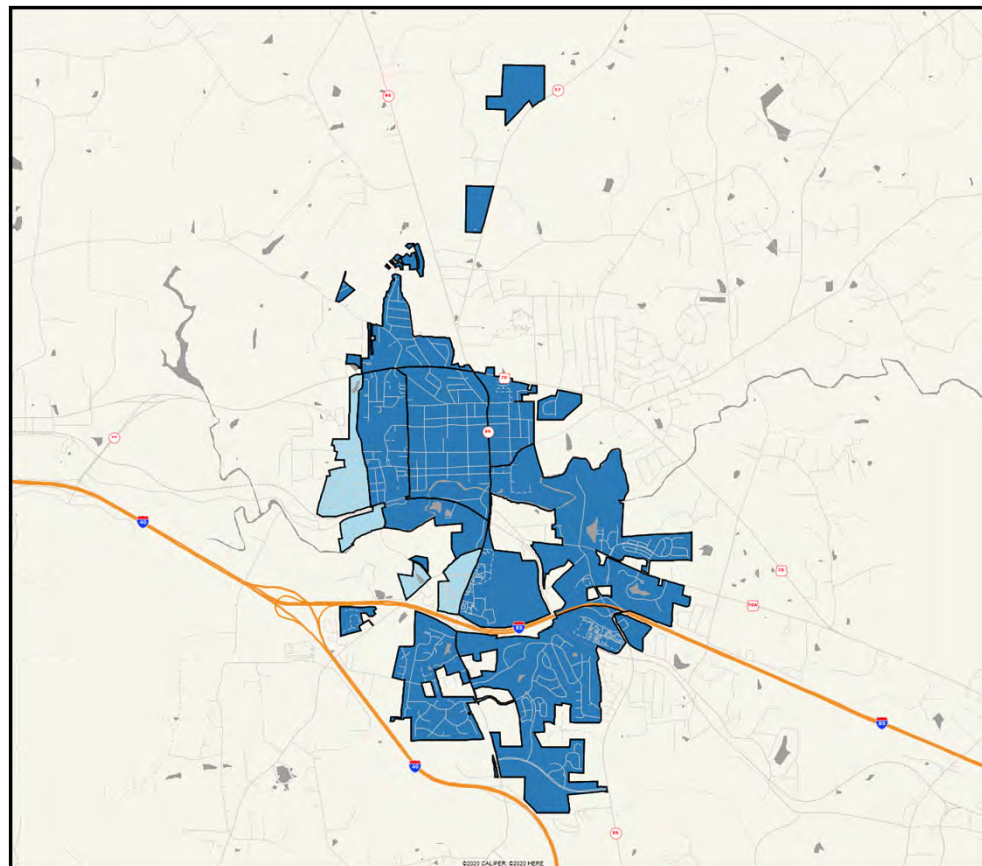
(Shading Reflects the Mean Rating by Census Block Group)



Hillsborough
Community
Survey

Q1-2. Overall quality of fire services

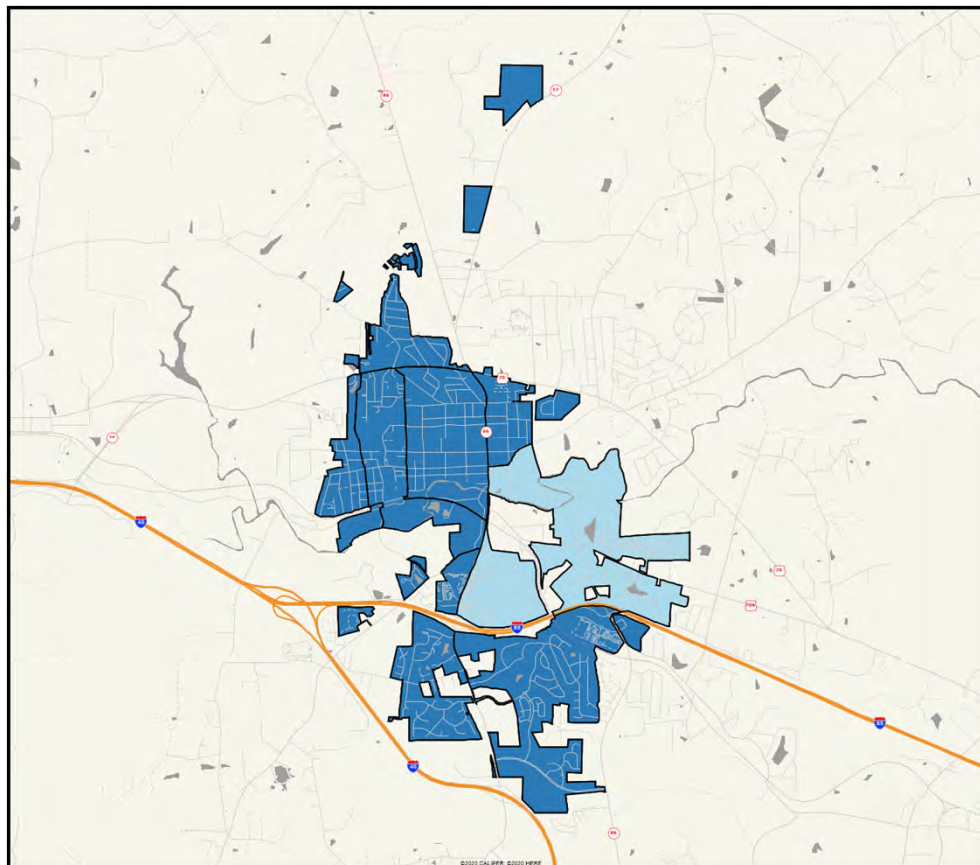
(Shading Reflects the Mean Rating by Census Block Group)



Hillsborough
Community
Survey

Q1-3. Overall quality of town parks

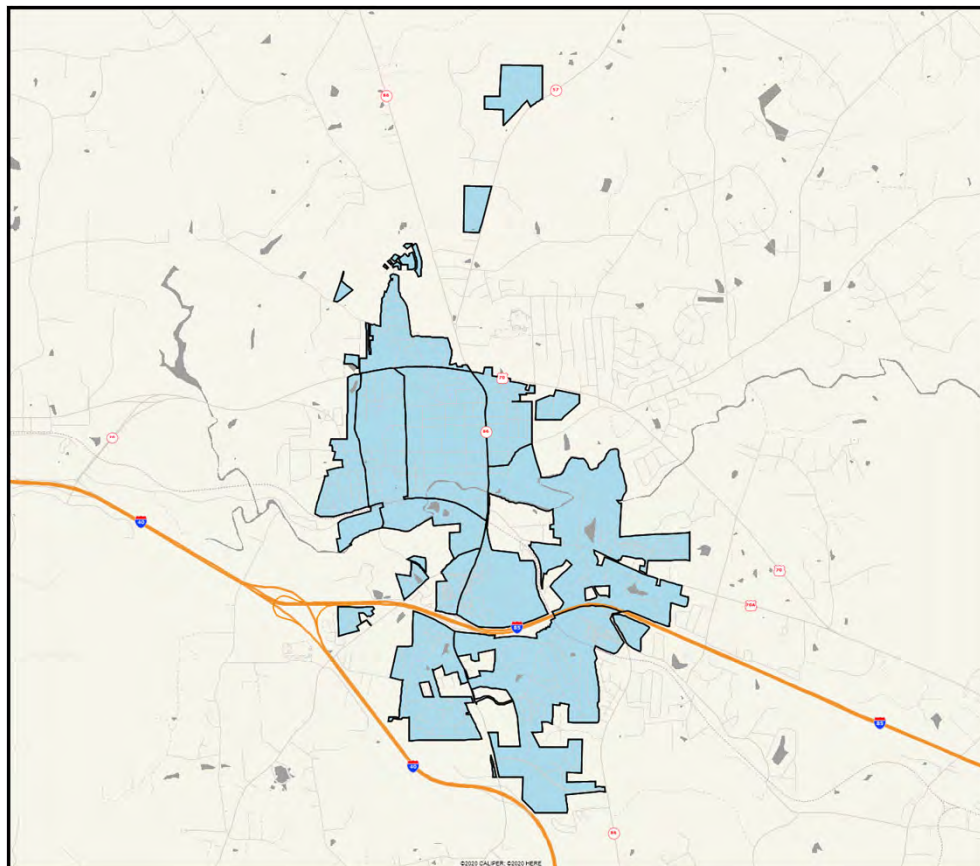
(Shading Reflects the Mean Rating by Census Block Group)



Hillsborough
Community
Survey

Q1-4. Overall maintenance of town streets

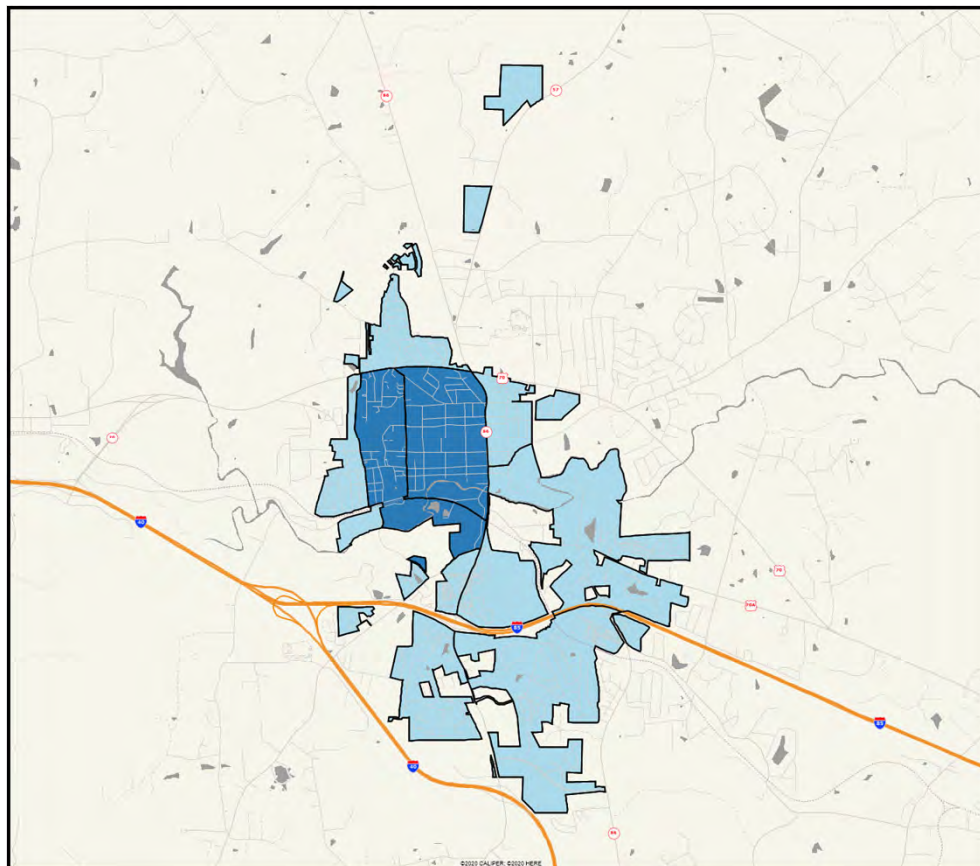
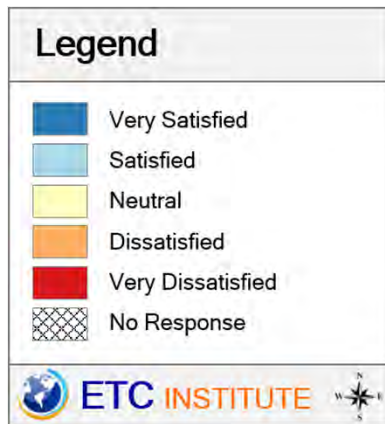
(Shading Reflects the Mean Rating by Census Block Group)



Hillsborough
Community
Survey

Q1-5. Overall maintenance of town buildings and facilities

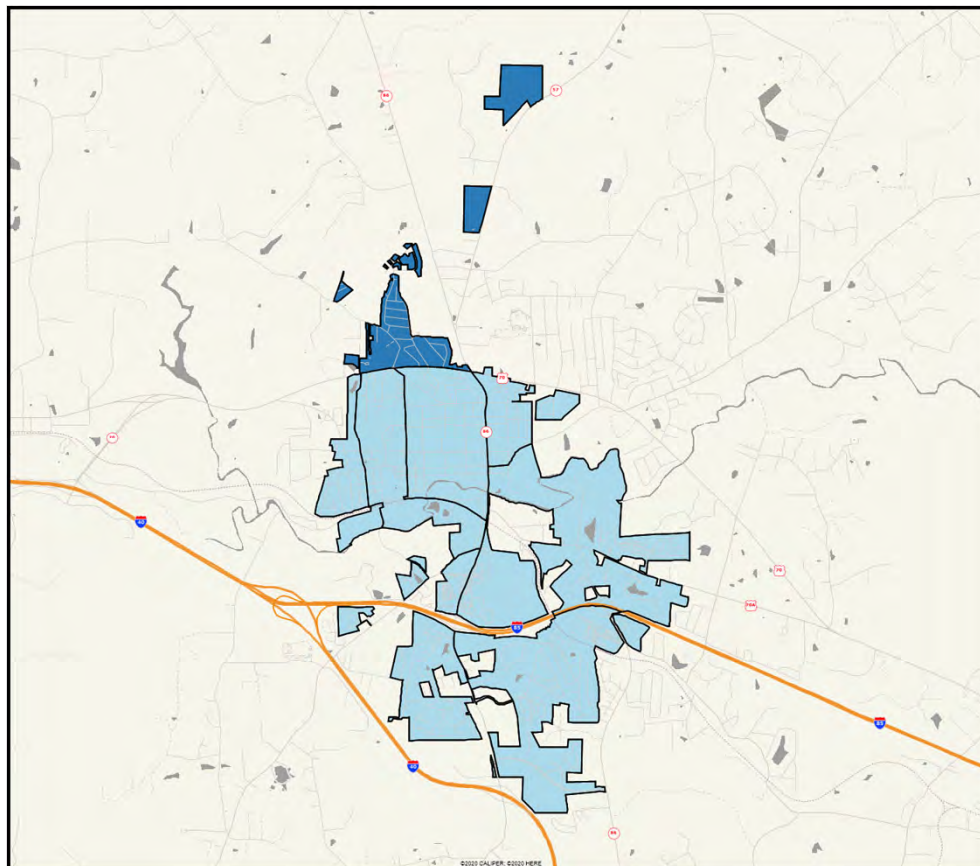
(Shading Reflects the Mean Rating by Census Block Group)



Hillsborough
Community
Survey

Q1-6. Overall quality of water and sewer services

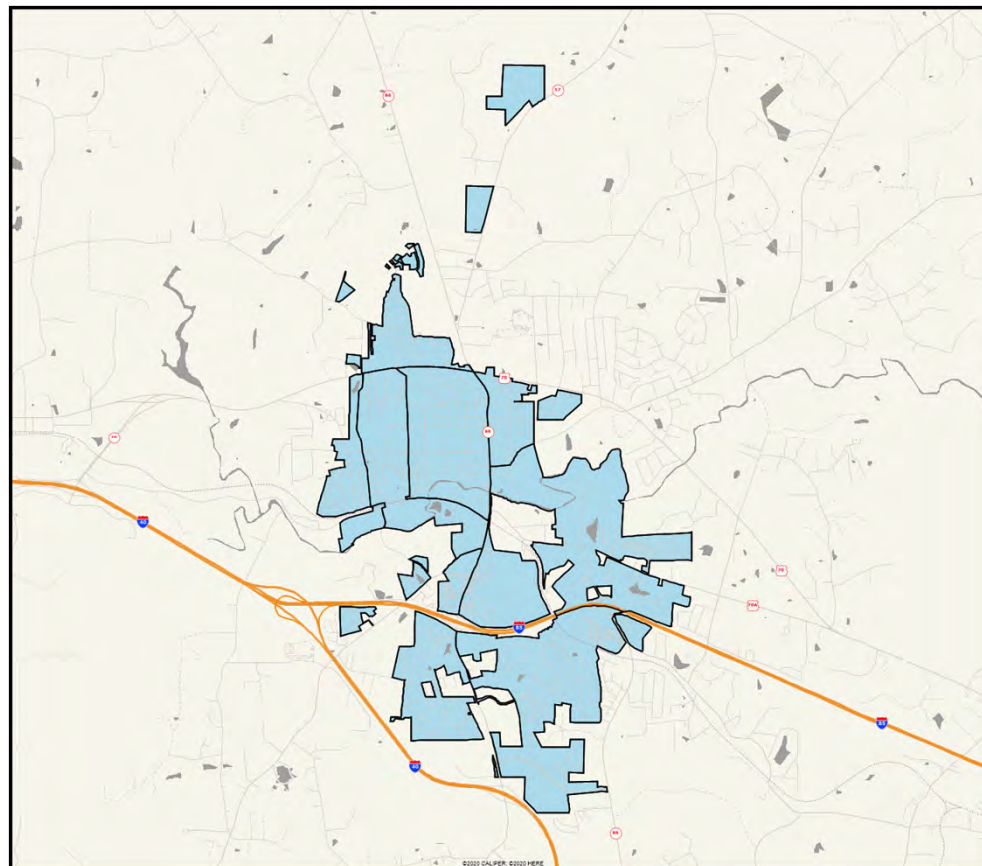
(Shading Reflects the Mean Rating by Census Block Group)



Hillsborough
Community
Survey

Q1-7. Overall enforcement of codes and ordinances

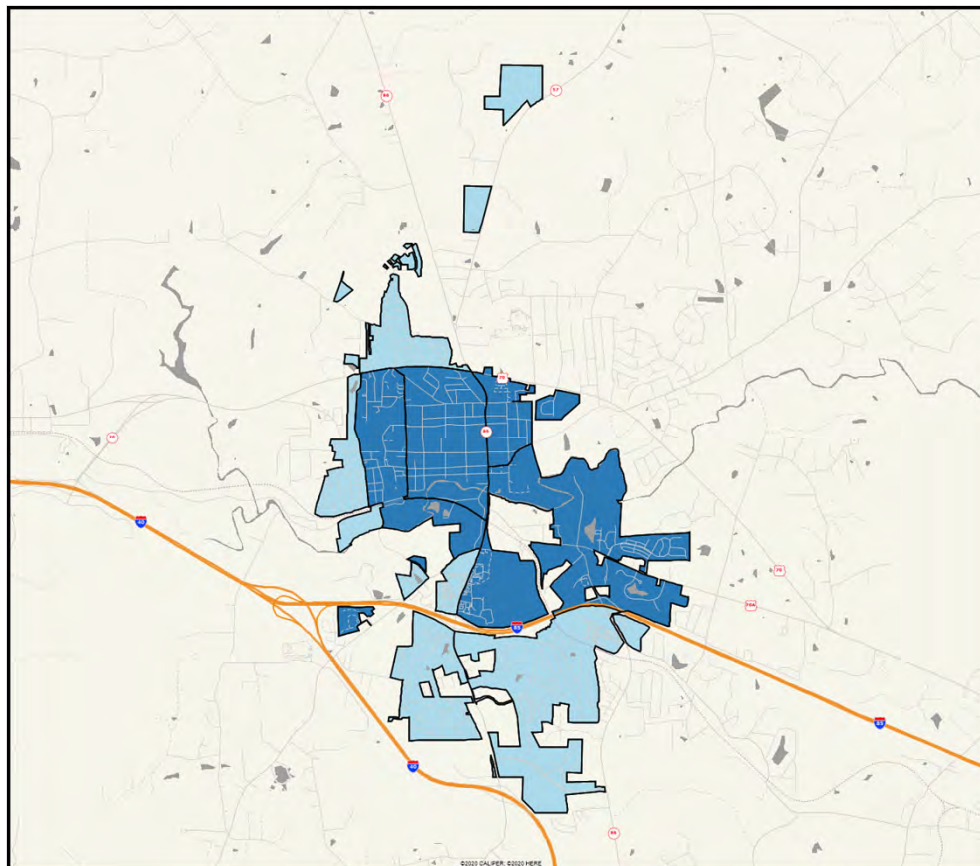
(Shading Reflects the Mean Rating by Census Block Group)



Hillsborough
Community
Survey

Q1-8. Overall quality of customer service you receive from town employees

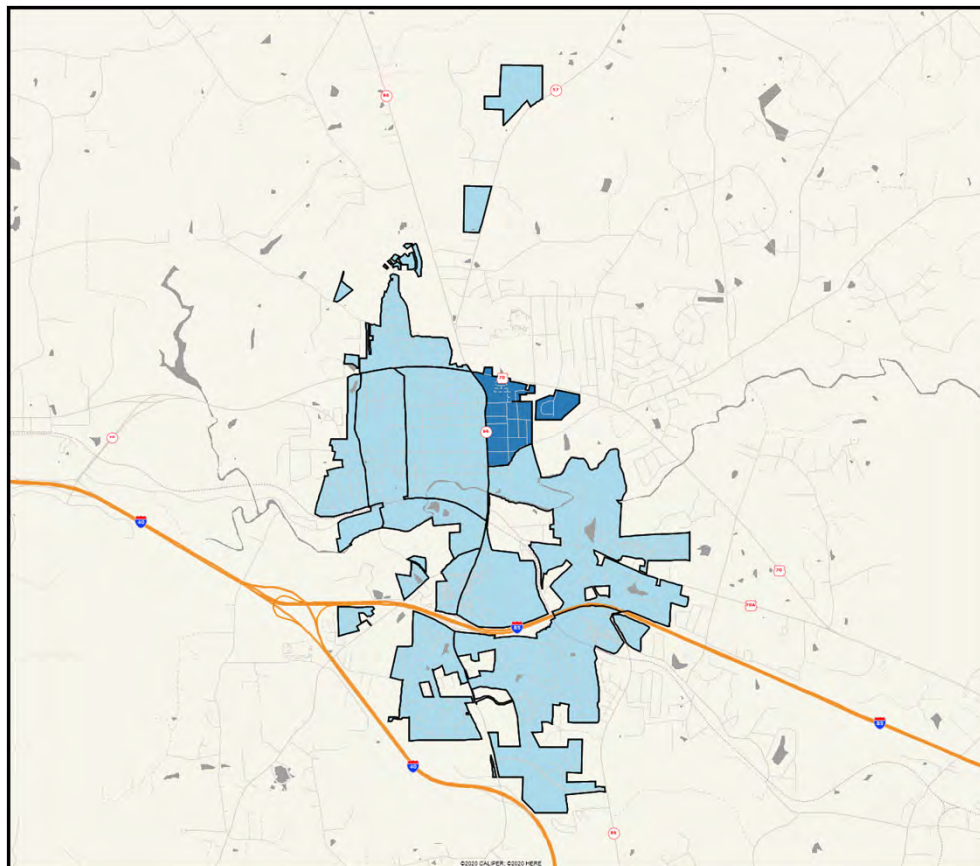
(Shading Reflects the Mean Rating by Census Block Group)



Hillsborough
Community
Survey

Q1-9. Overall effectiveness of communication with the public

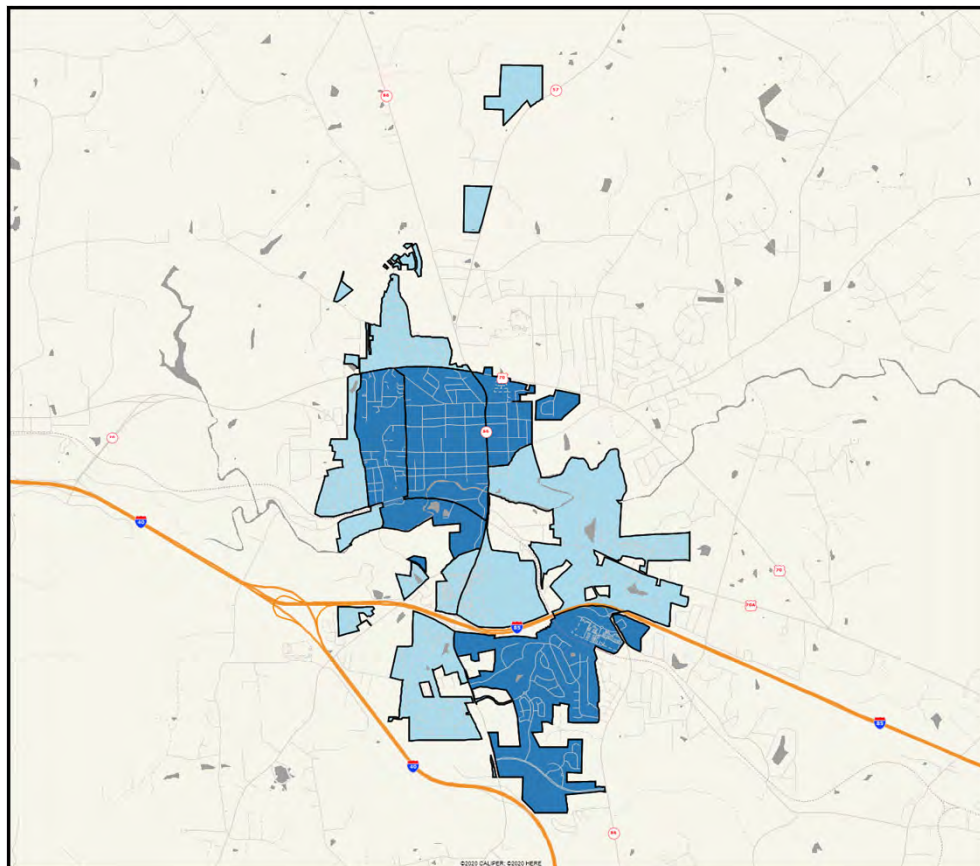
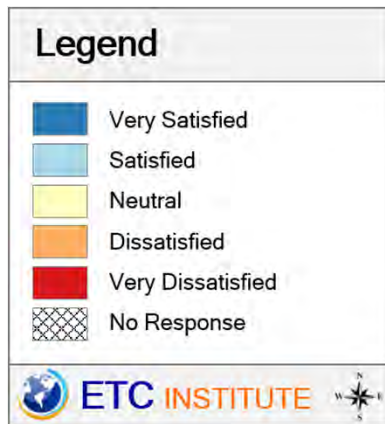
(Shading Reflects the Mean Rating by Census Block Group)



Hillsborough
Community
Survey

Q3-1. Overall quality of services provided by the town

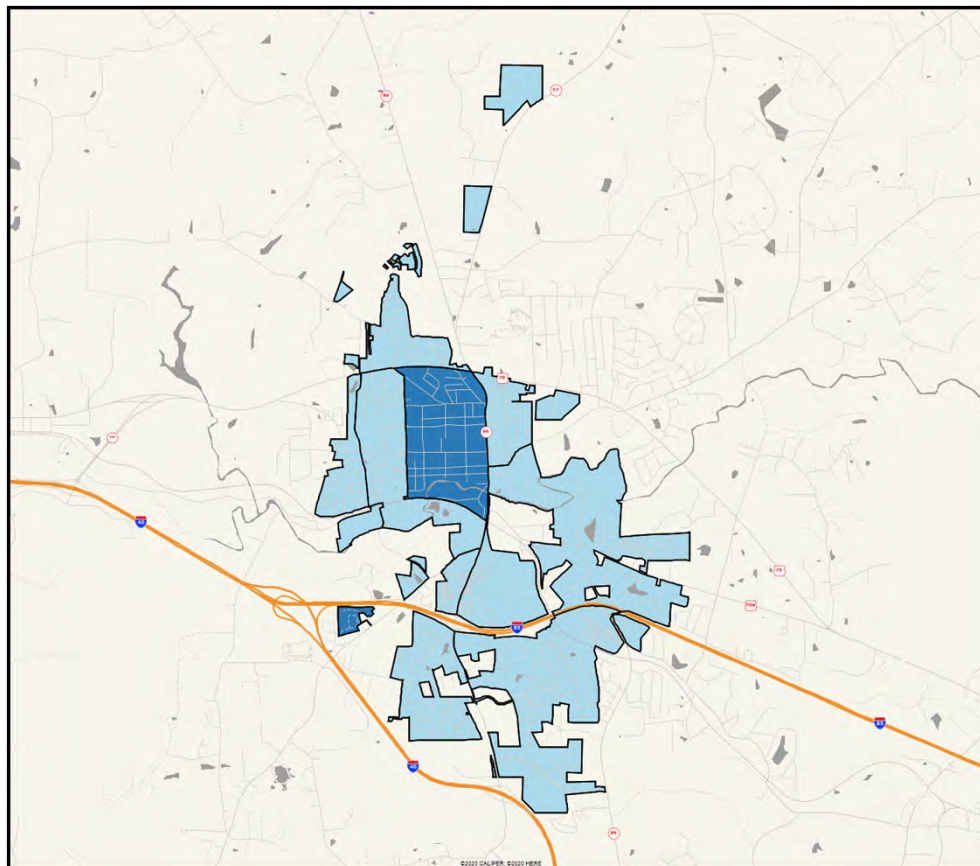
(Shading Reflects the Mean Rating by Census Block Group)



Hillsborough
Community
Survey

Q3-2. Overall appearance of Hillsborough

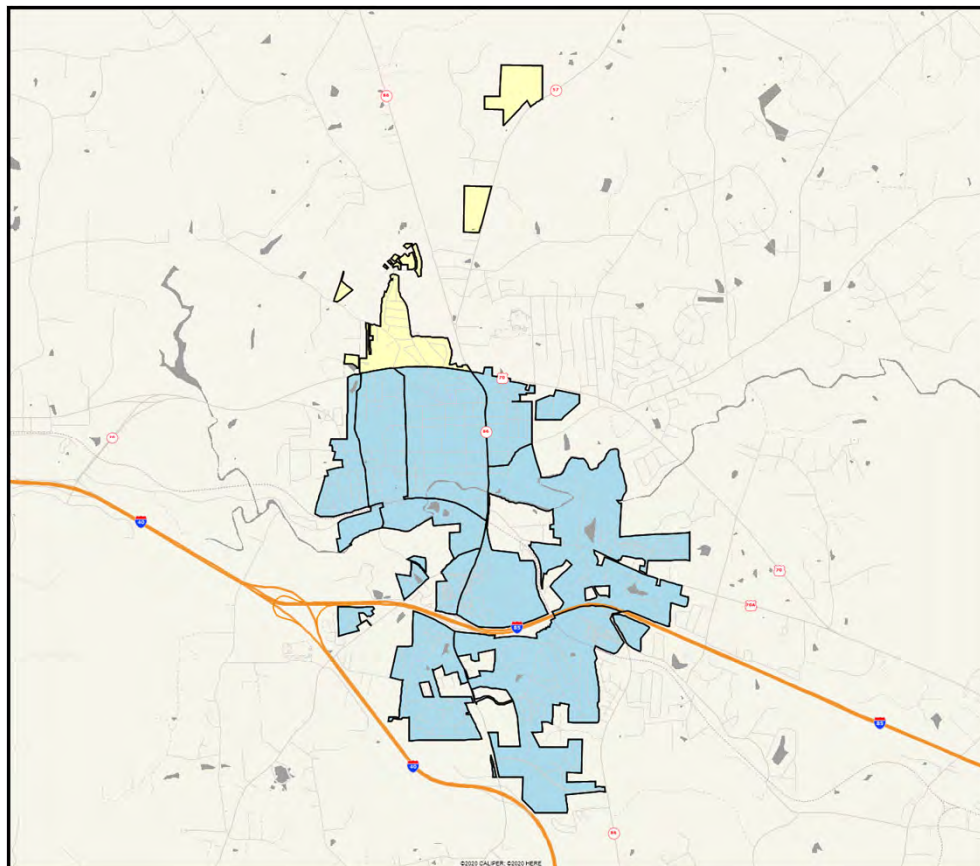
(Shading Reflects the Mean Rating by Census Block Group)



Hillsborough
Community
Survey

Q3-3. Overall acceptance by the community of diverse populations

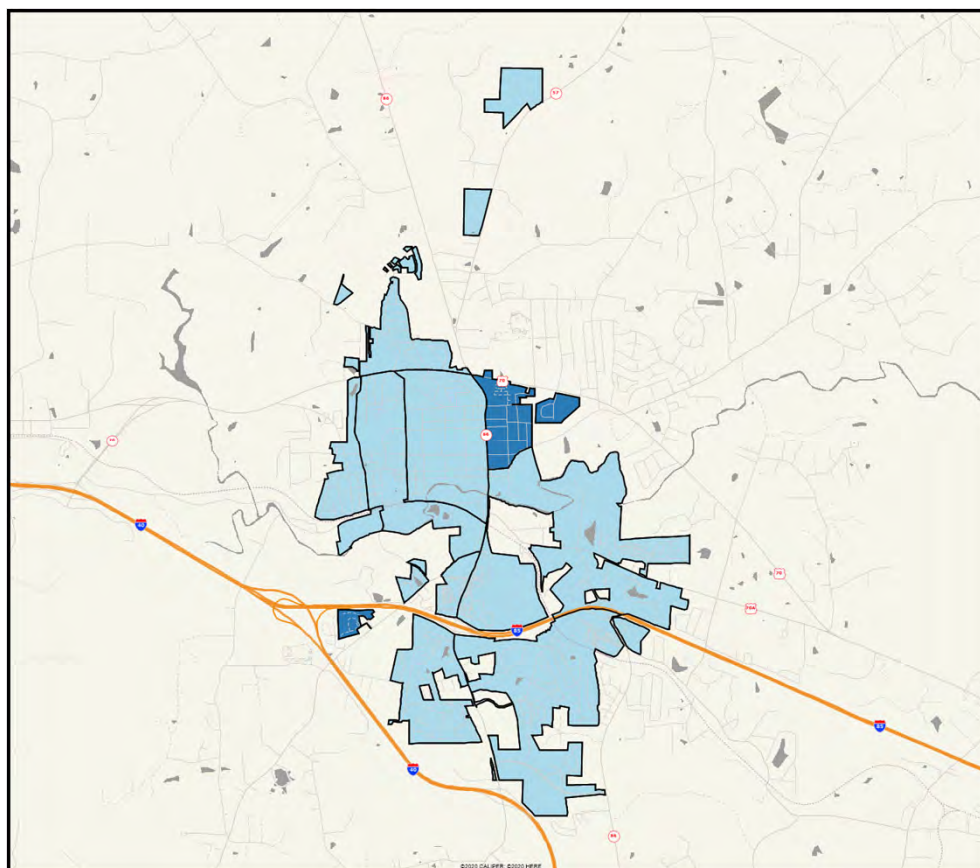
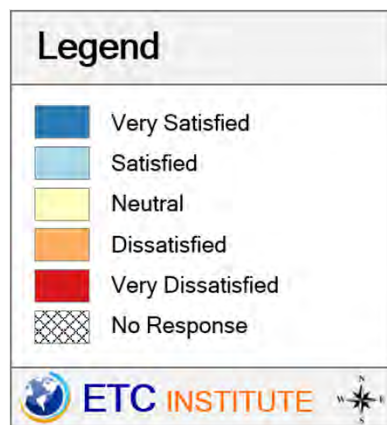
(Shading Reflects the Mean Rating by Census Block Group)



Hillsborough
Community
Survey

Q3-4. Overall image of Hillsborough

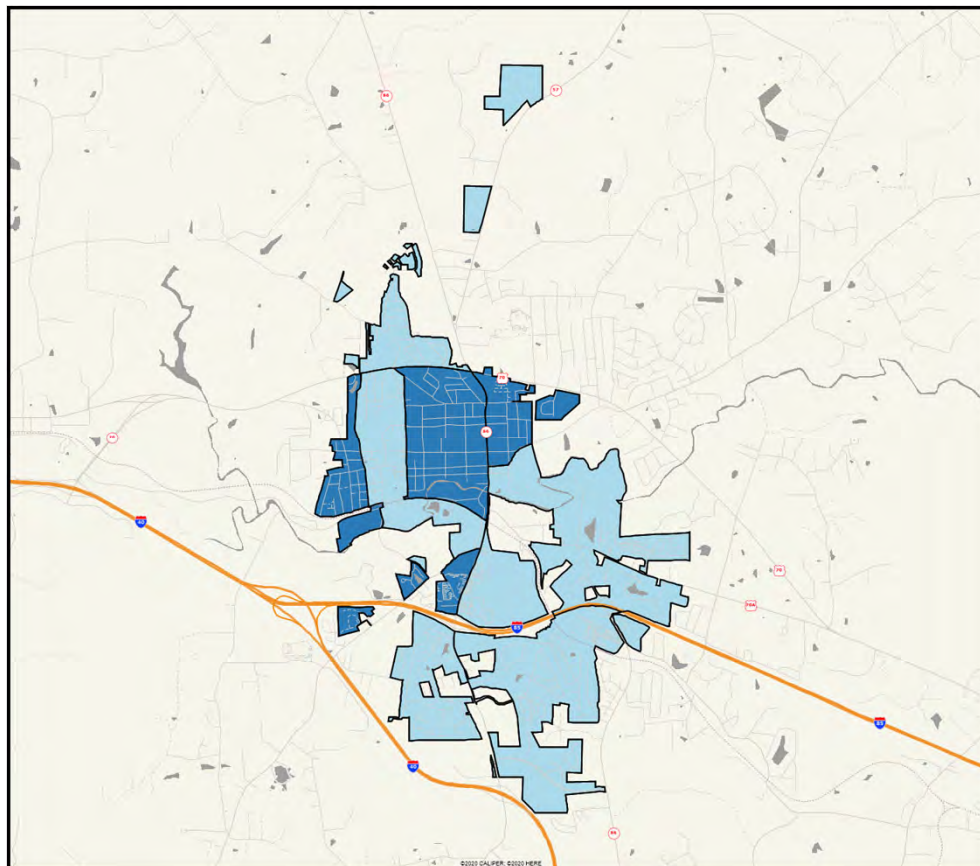
(Shading Reflects the Mean Rating by Census Block Group)



Hillsborough
Community
Survey

Q3-5. Overall quality of life in Hillsborough

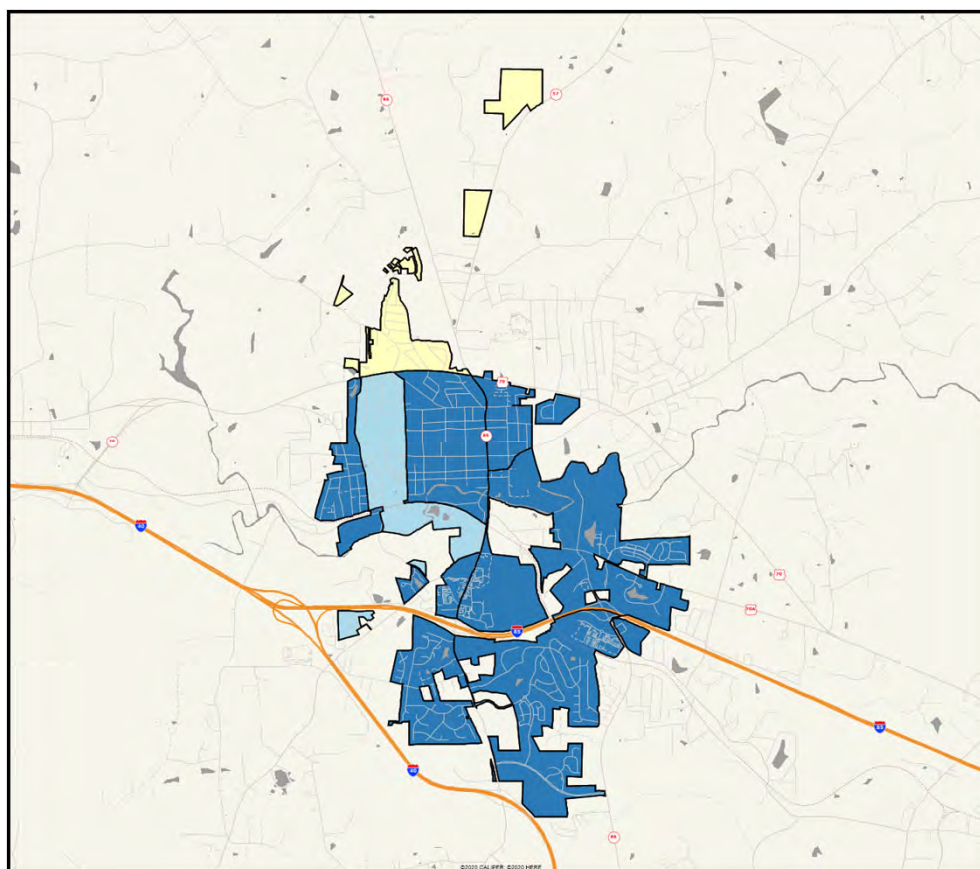
(Shading Reflects the Mean Rating by Census Block Group)



Hillsborough
Community
Survey

Q3-6. Overall quality of life in your neighborhood

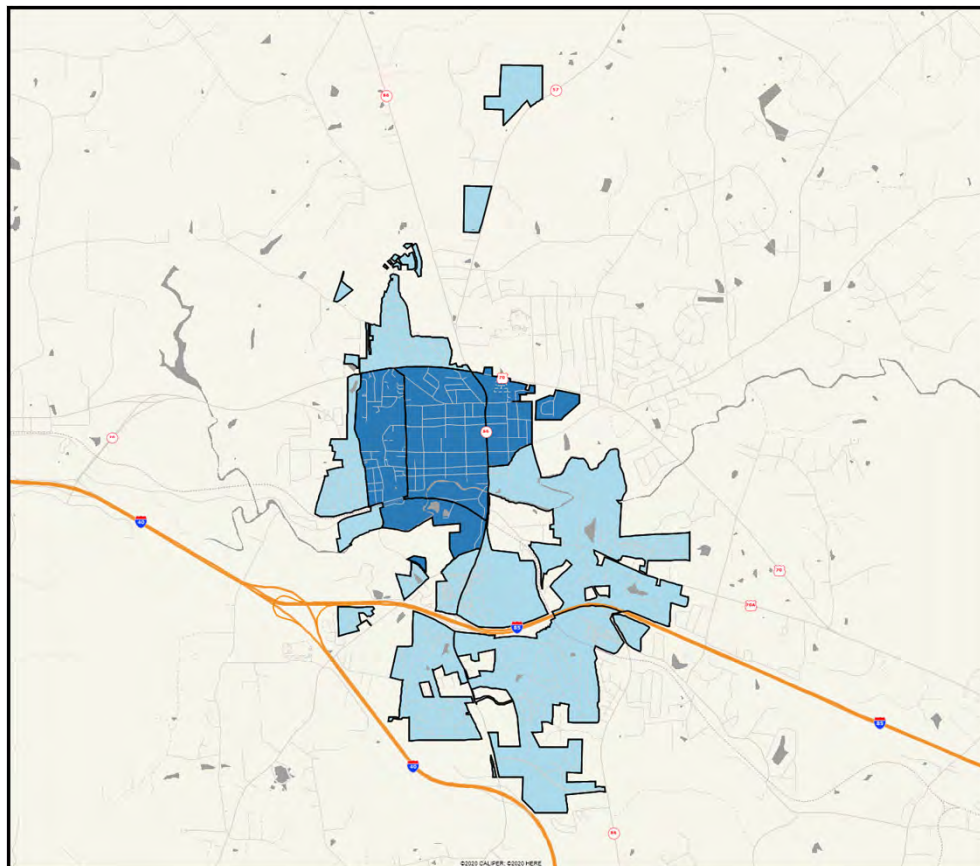
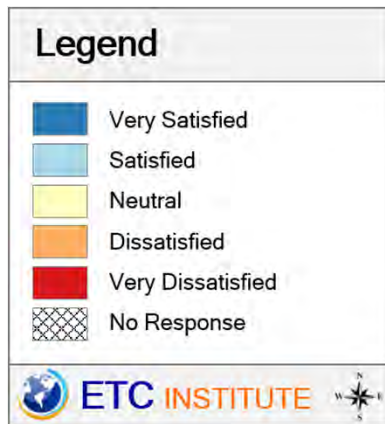
(Shading Reflects the Mean Rating by Census Block Group)



Hillsborough
Community
Survey

Q3-7. Overall availability of arts and cultural offerings within Hillsborough

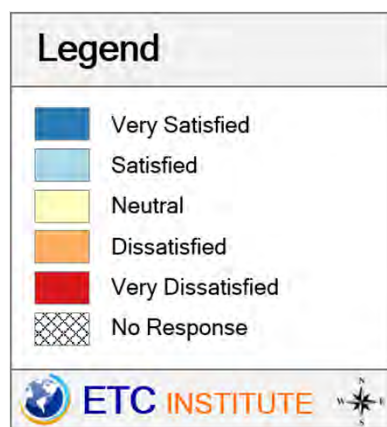
(Shading Reflects the Mean Rating by Census Block Group)



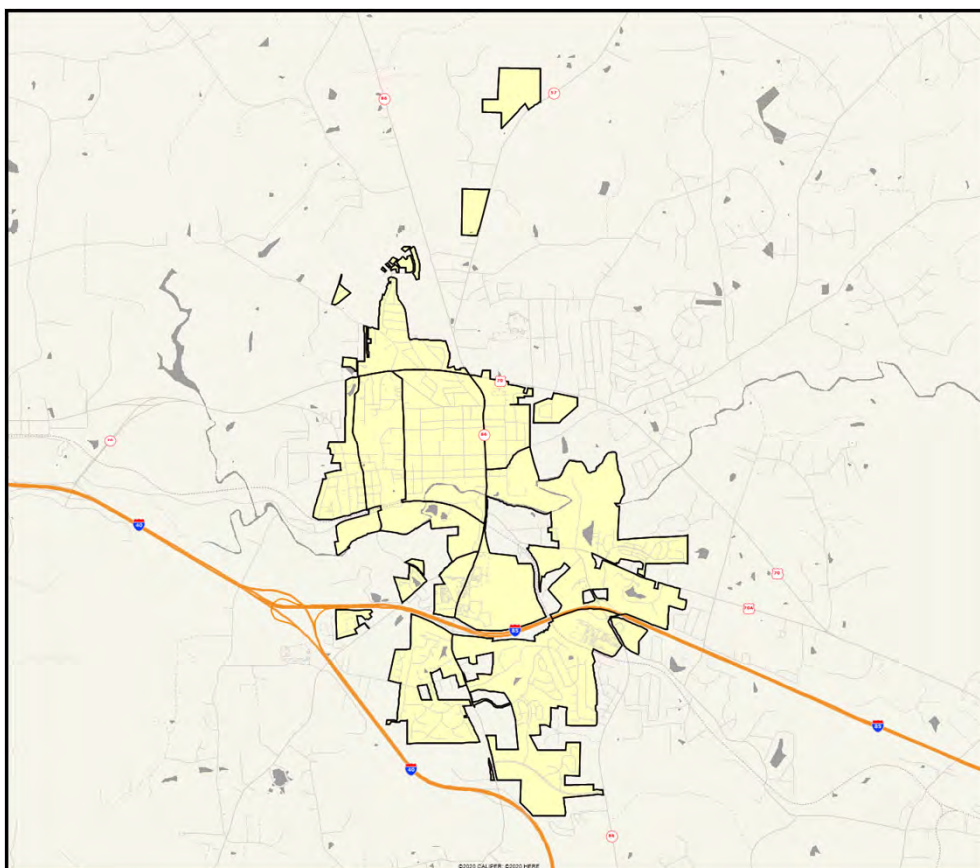
Hillsborough
Community
Survey

Q3-8. Overall ease of travel within Hillsborough

(Shading Reflects the Mean Rating by Census Block Group)

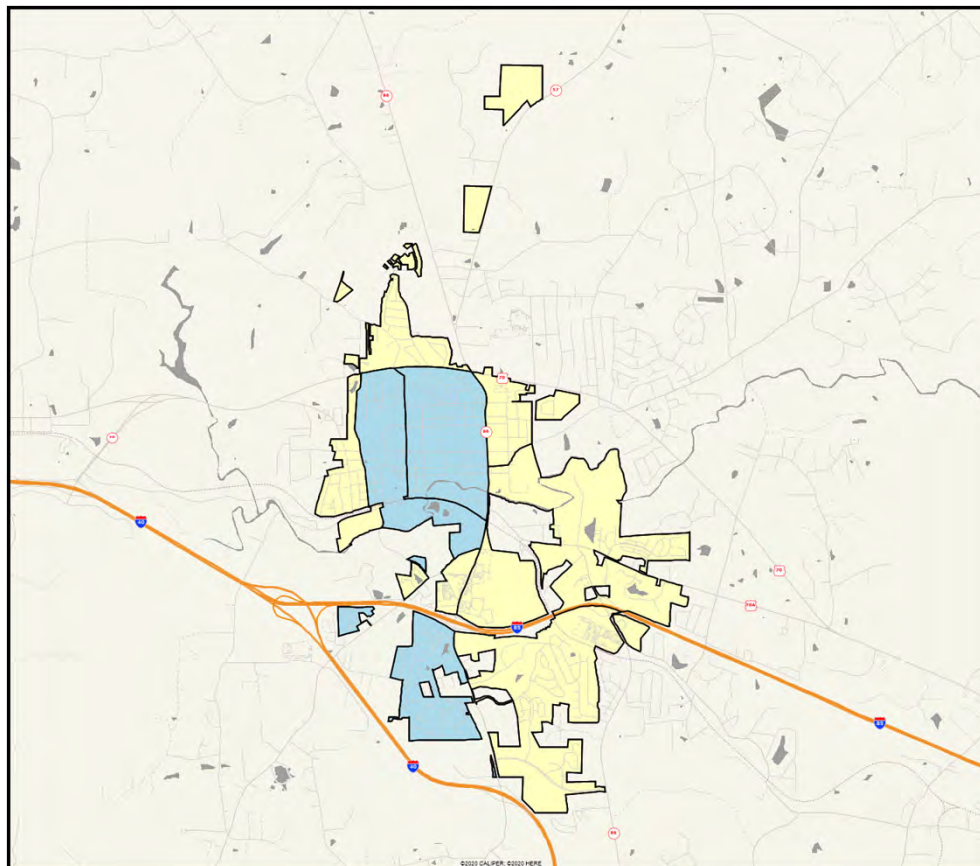


Hillsborough
Community
Survey



Q3-9. Overall value received for your local taxes and fees

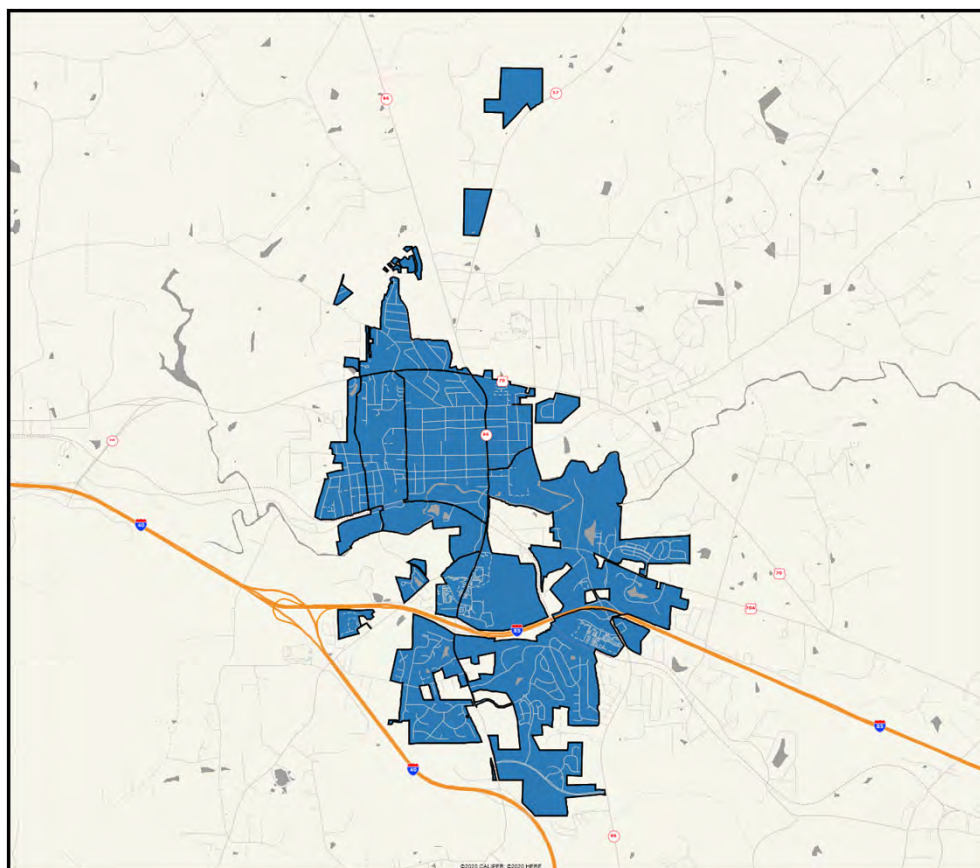
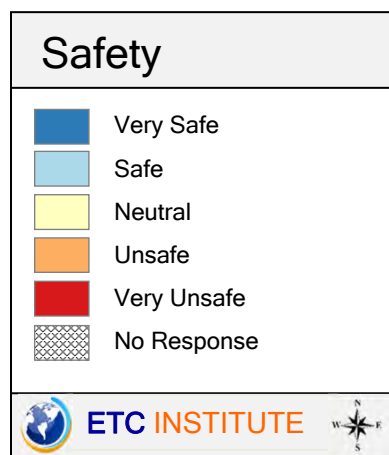
(Shading Reflects the Mean Rating by Census Block Group)



Hillsborough Community Survey

Q4-1. In downtown Hillsborough during the day

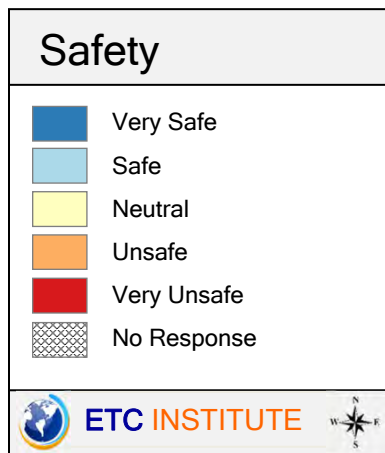
(Shading Reflects the Mean Rating by Census Block Group)



Hillsborough
Community
Survey

Q4-2. In downtown Hillsborough at night

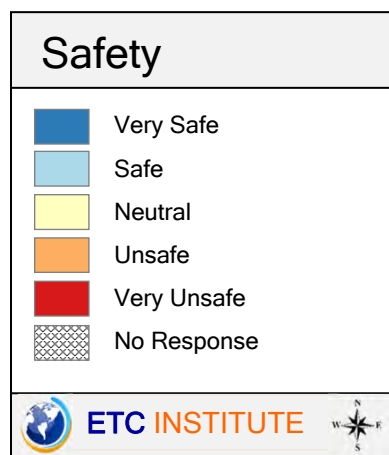
(Shading Reflects the Mean Rating by Census Block Group)



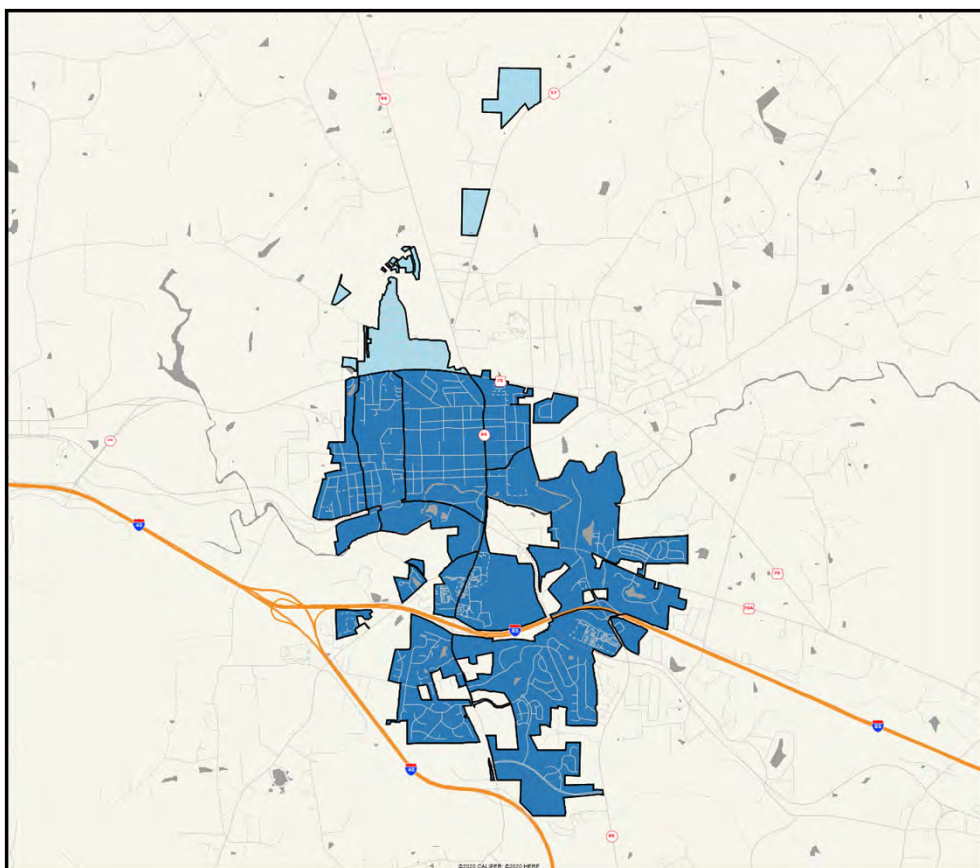
Hillsborough
Community
Survey

Q4-3. In Hillsborough overall

(Shading Reflects the Mean Rating by Census Block Group)

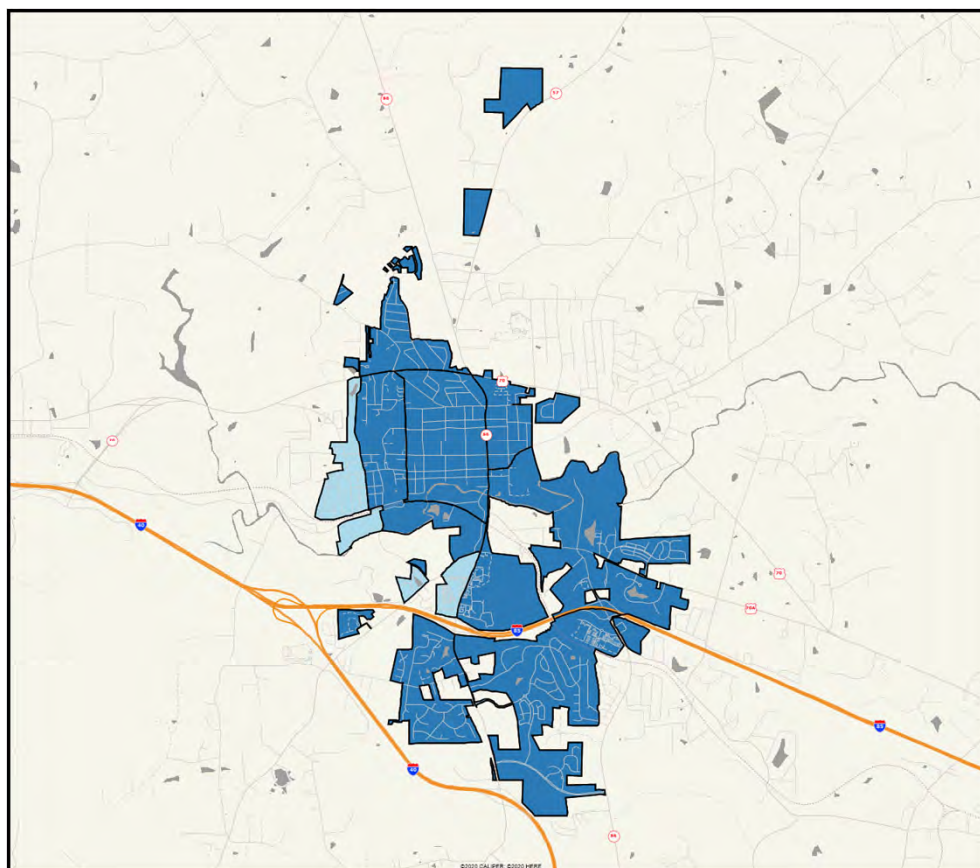
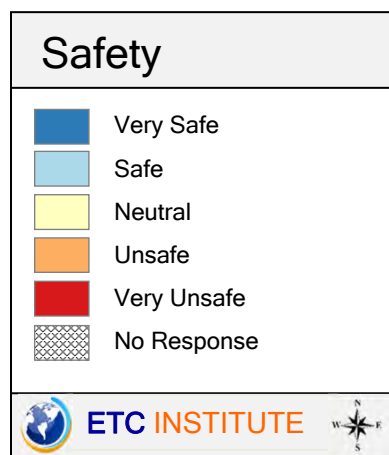


Hillsborough
Community
Survey



Q4-4. On Riverwalk trails and in town parks

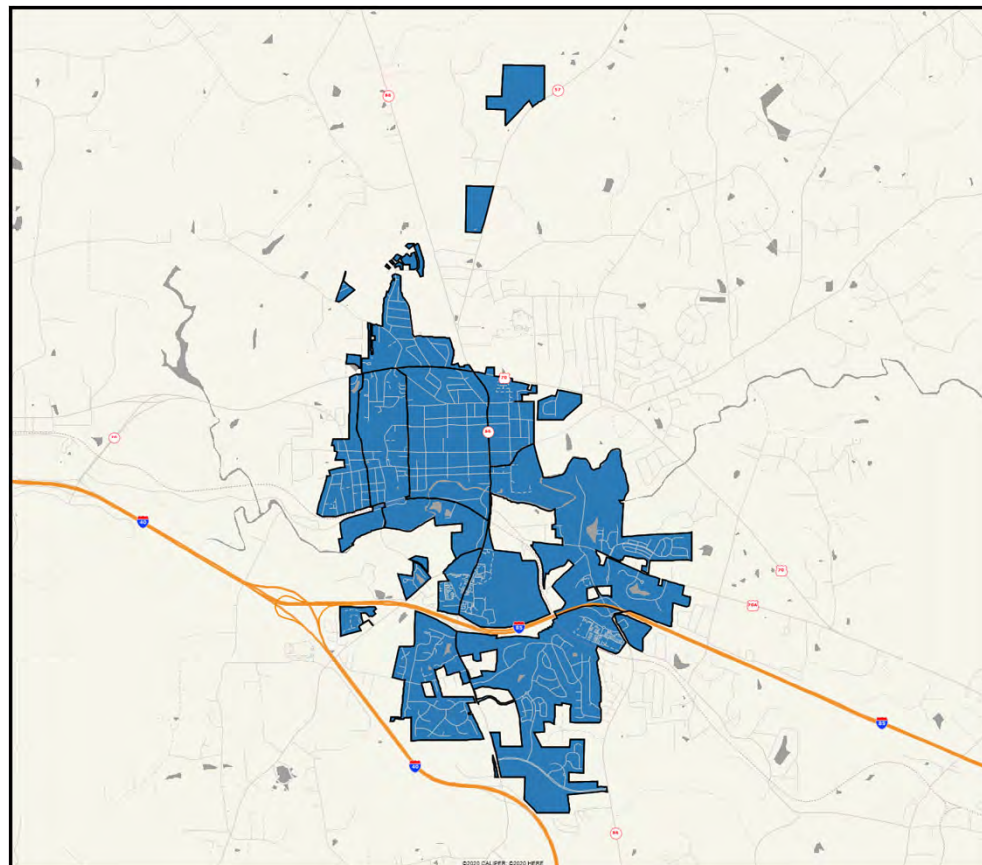
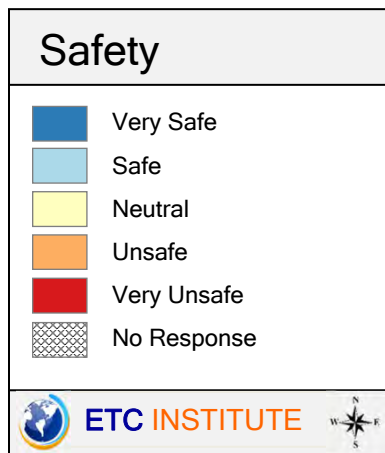
(Shading Reflects the Mean Rating by Census Block Group)



Hillsborough
Community
Survey

Q4-5. When walking alone in your neighborhood during the day

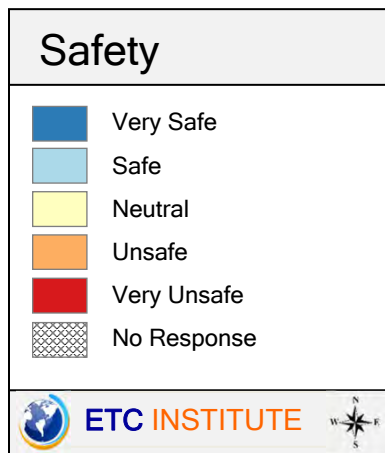
(Shading Reflects the Mean Rating by Census Block Group)



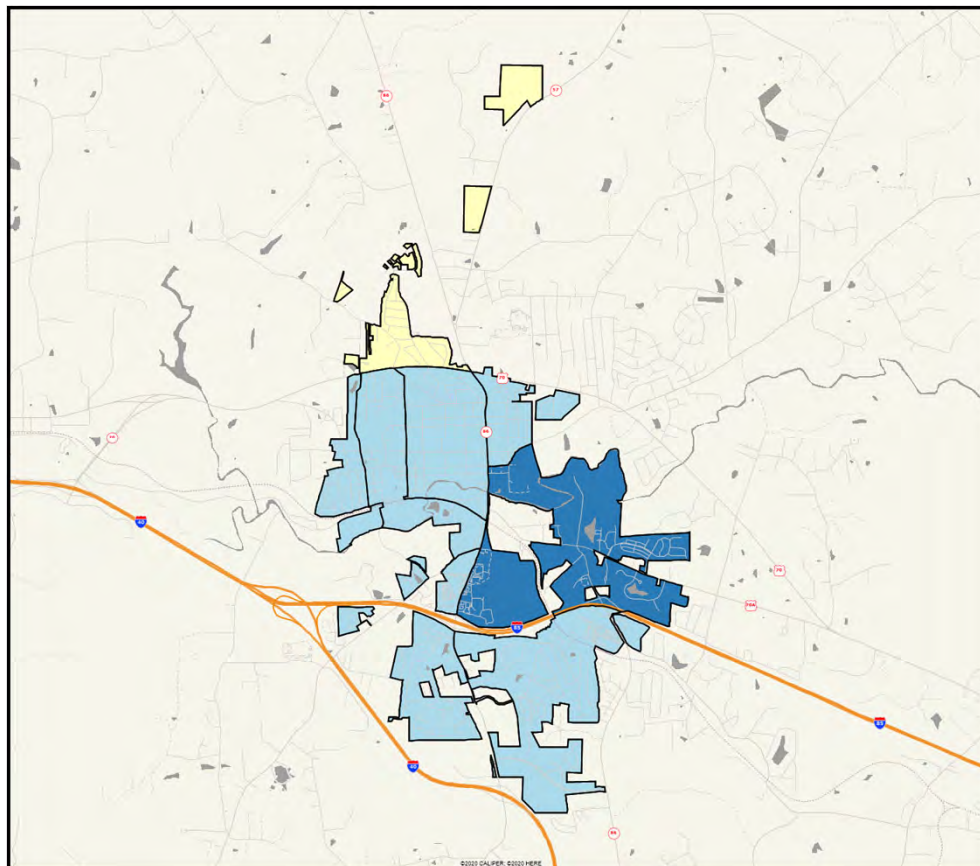
Hillsborough
Community
Survey

Q4-6. When walking alone in your neighborhood at night

(Shading Reflects the Mean Rating by Census Block Group)

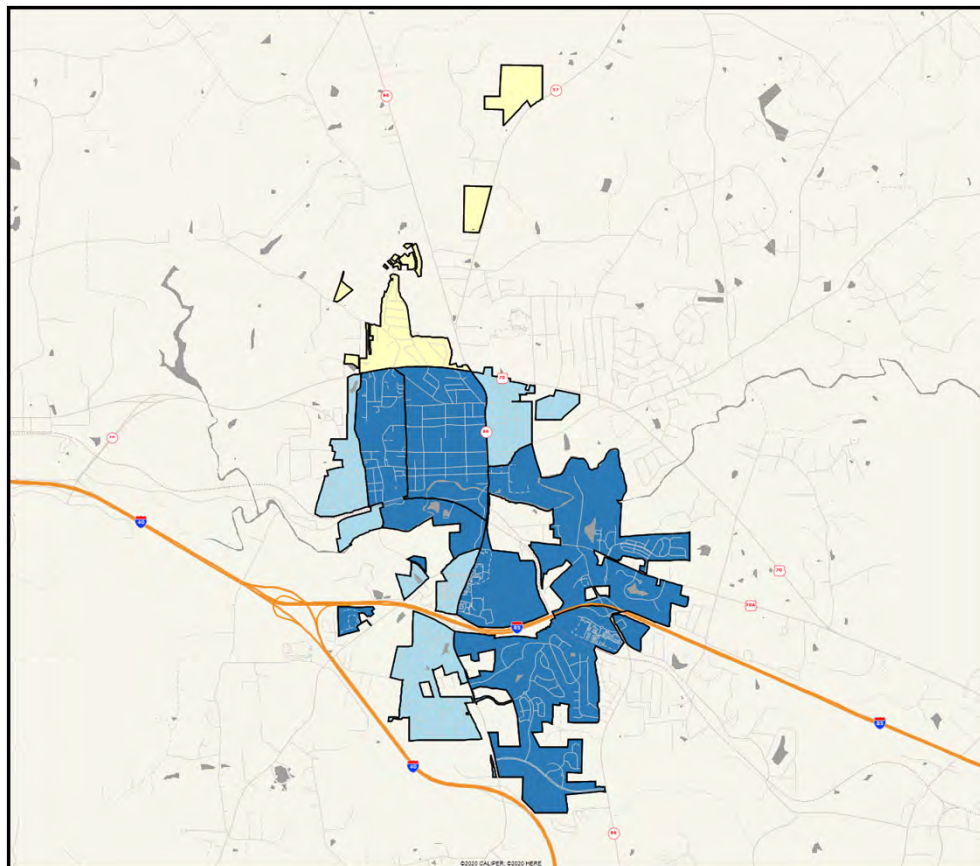
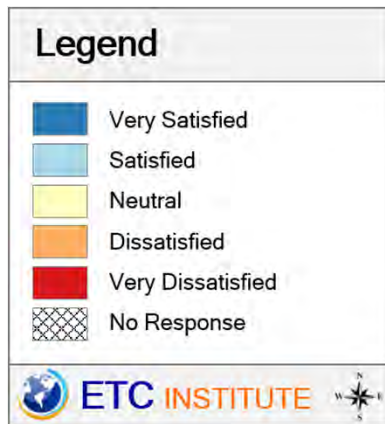


Hillsborough
Community
Survey



Q5-1. Overall police relationship with your neighborhood

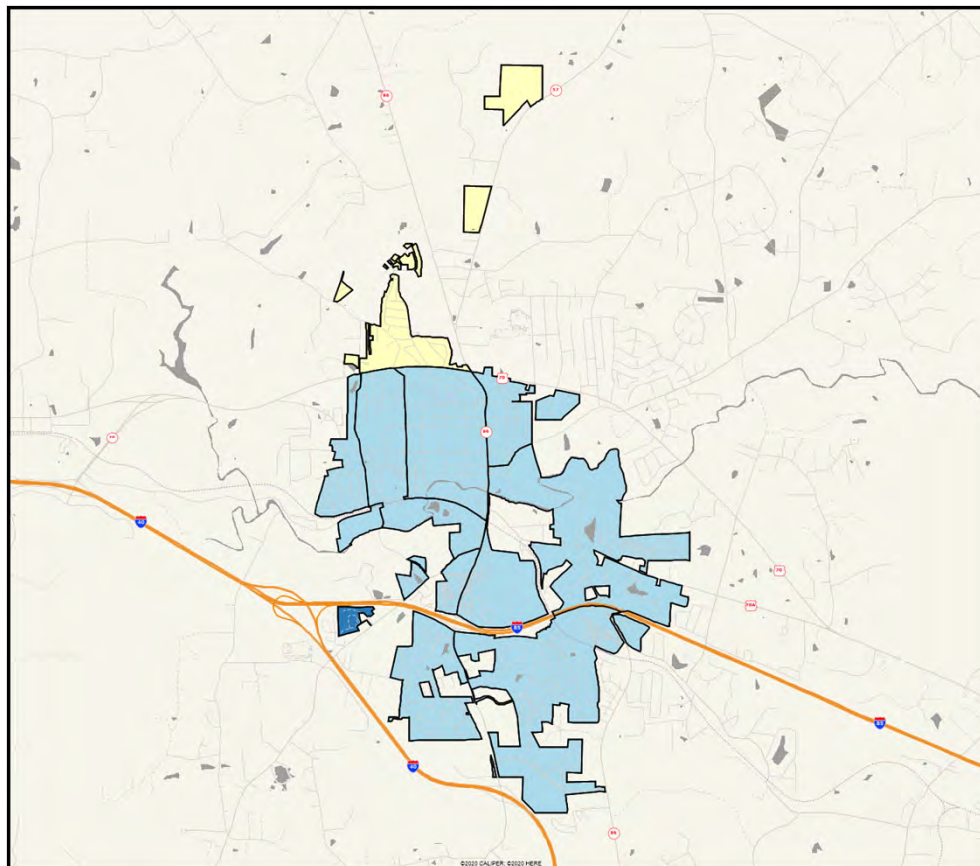
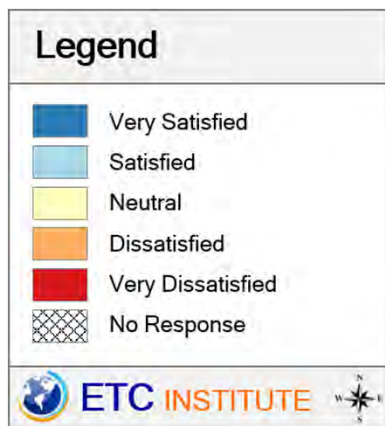
(Shading Reflects the Mean Rating by Census Block Group)



Hillsborough
Community
Survey

Q5-2. Visibility of police in neighborhoods

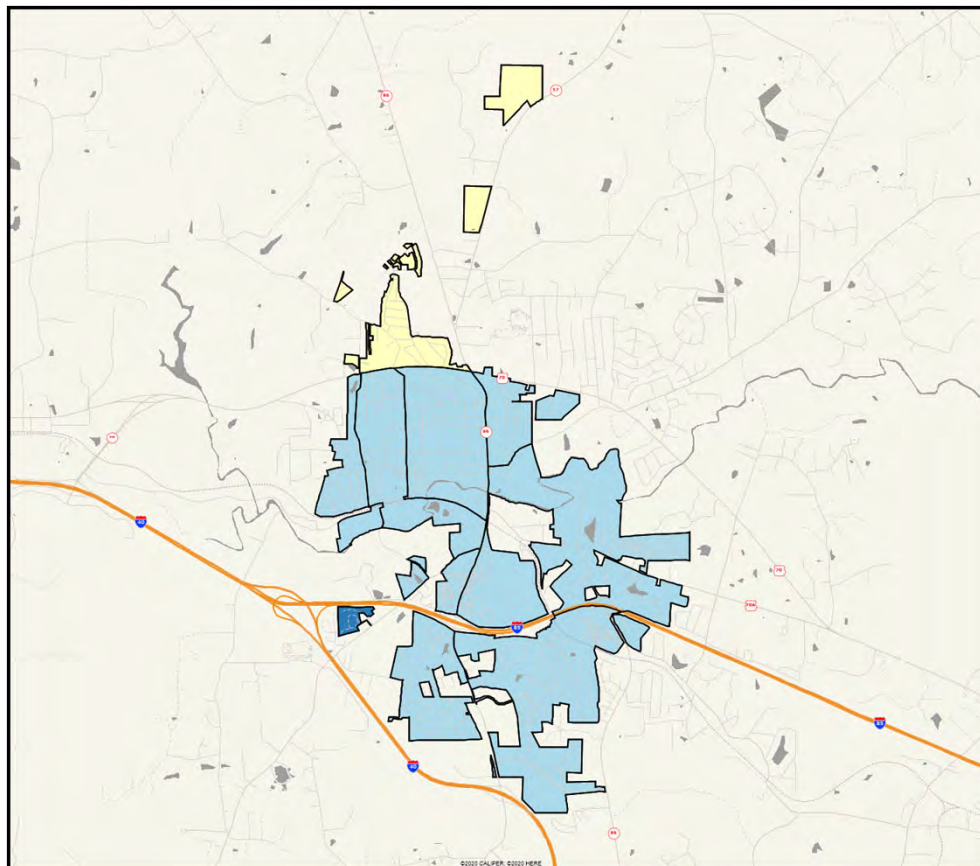
(Shading Reflects the Mean Rating by Census Block Group)



Hillsborough
Community
Survey

Q5-3. Town's efforts to prevent crime

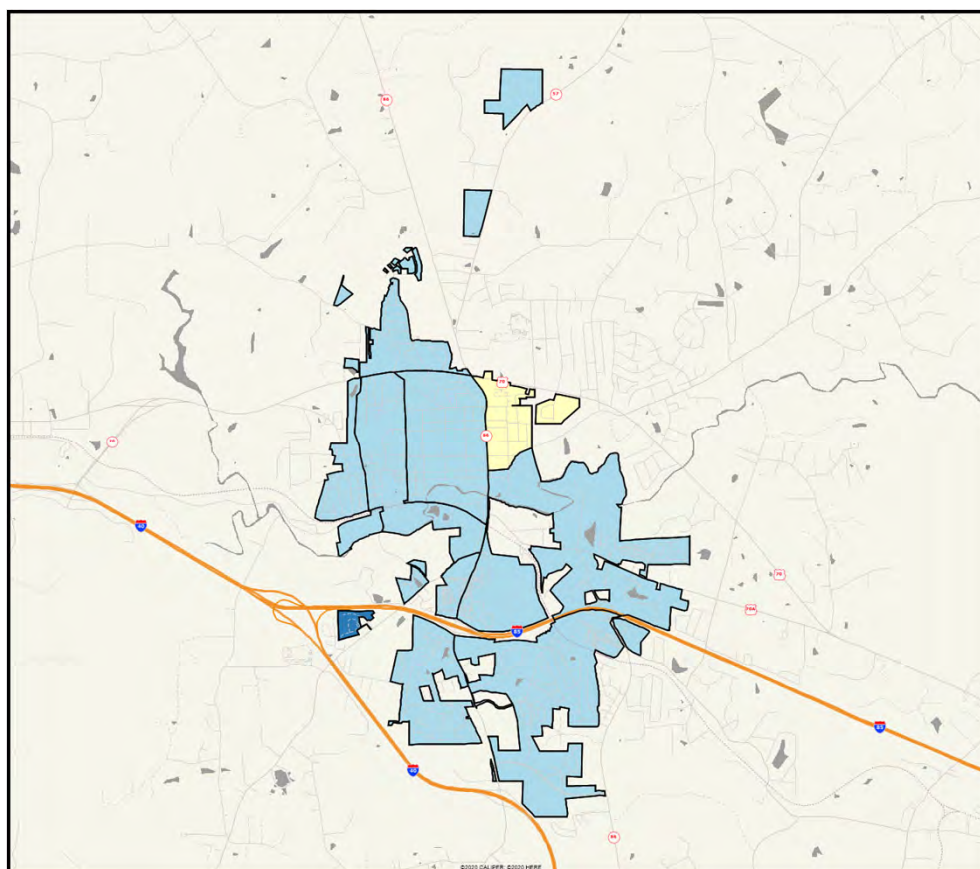
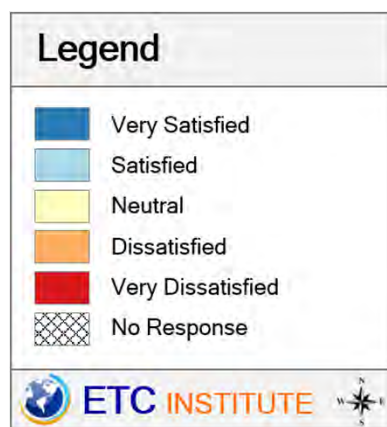
(Shading Reflects the Mean Rating by Census Block Group)



Hillsborough
Community
Survey

Q5-4. Enforcement of local traffic laws

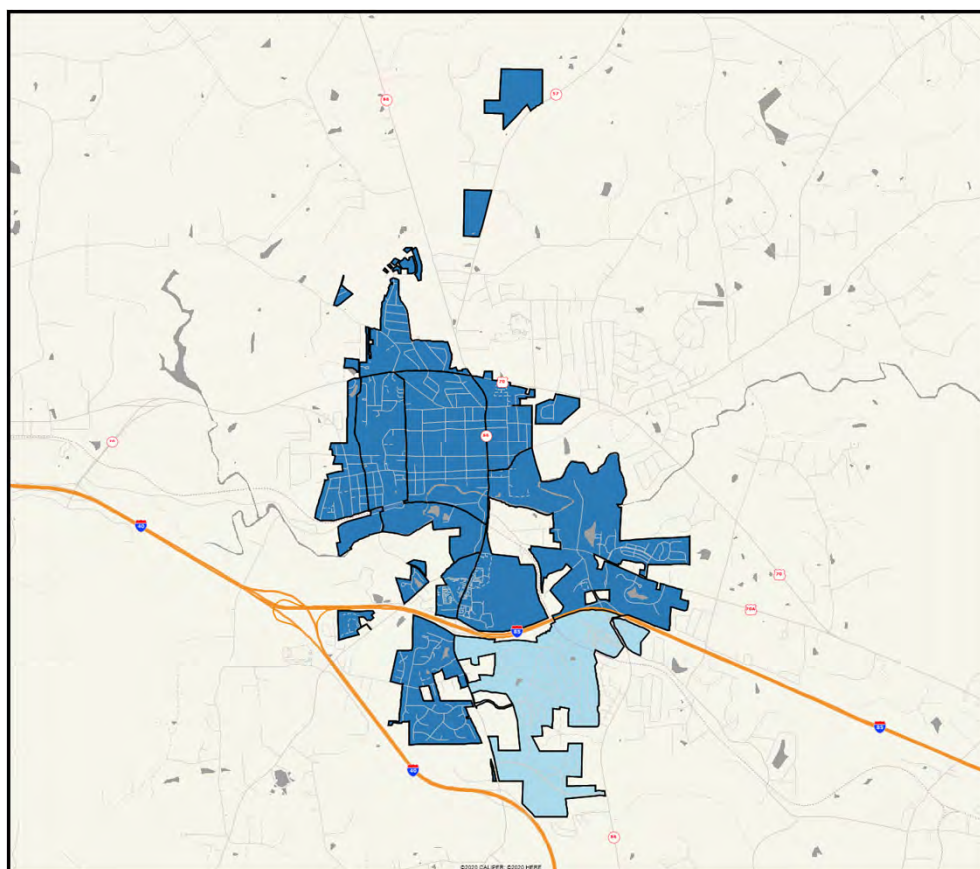
(Shading Reflects the Mean Rating by Census Block Group)



Hillsborough
Community
Survey

Q6-1. Availability of greenways and trails

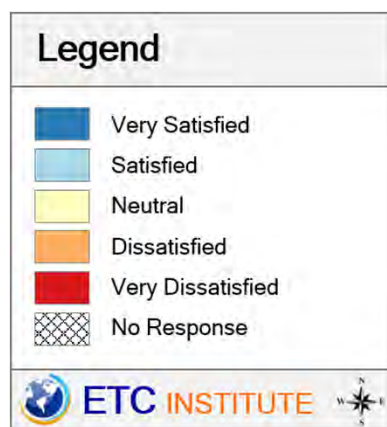
(Shading Reflects the Mean Rating by Census Block Group)



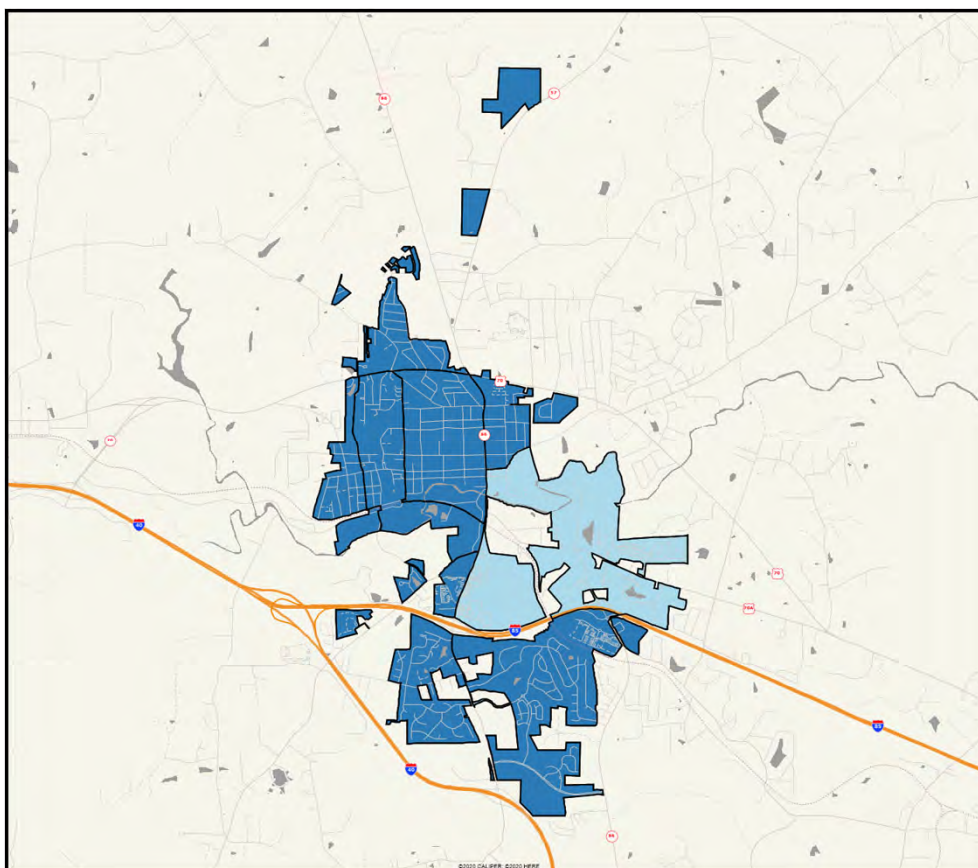
Hillsborough
Community
Survey

Q6-2. Availability of parks

(Shading Reflects the Mean Rating by Census Block Group)



Hillsborough
Community
Survey



Q6-3. Availability of playgrounds

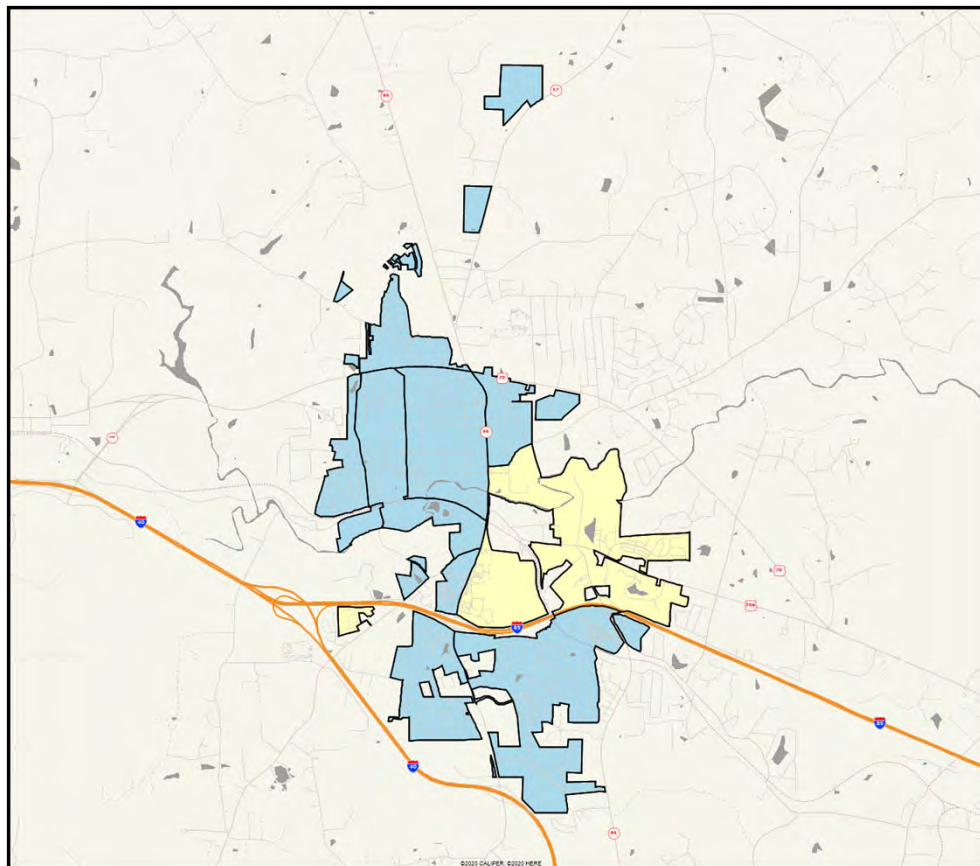
(Shading Reflects the Mean Rating by Census Block Group)



Hillsborough
Community
Survey

Q7-1. Enforcement of trash and debris cleanup on private property

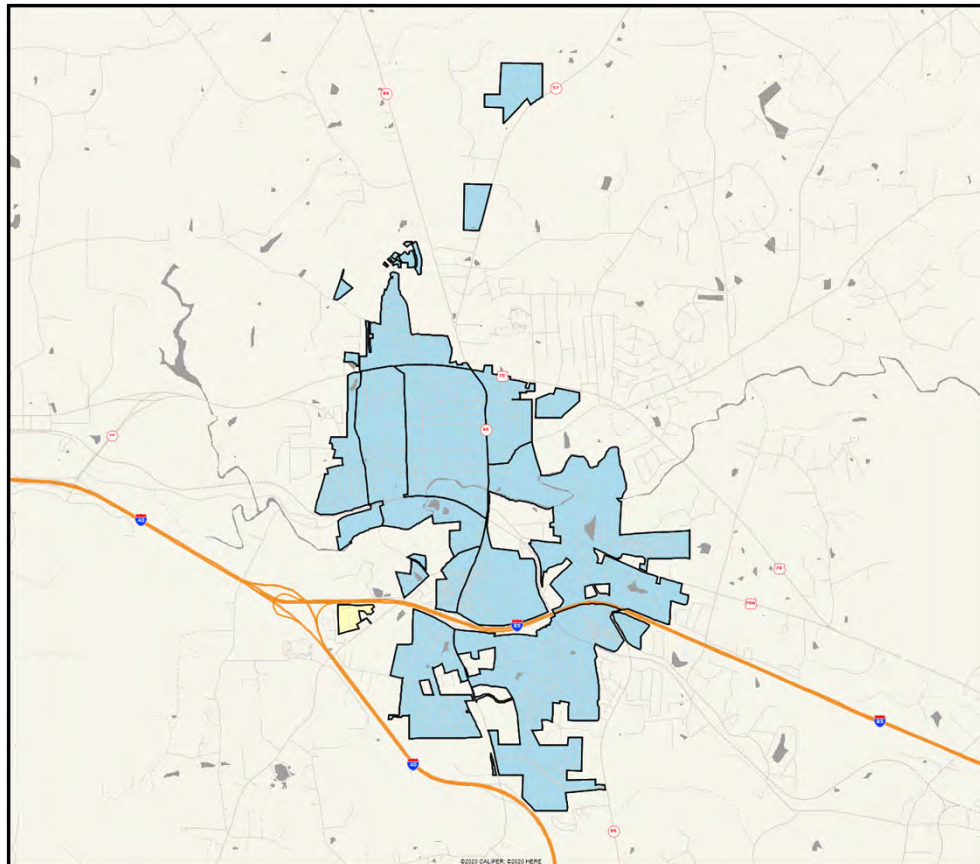
(Shading Reflects the Mean Rating by Census Block Group)



Hillsborough
Community
Survey

Q7-2. Enforcement of mowing and cutting of weeds on private property

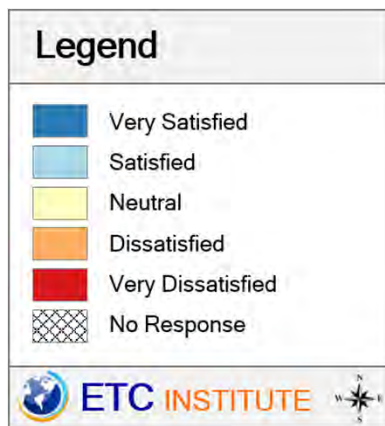
(Shading Reflects the Mean Rating by Census Block Group)



Hillsborough
Community
Survey

Q8-1. Convenience of downtown parking

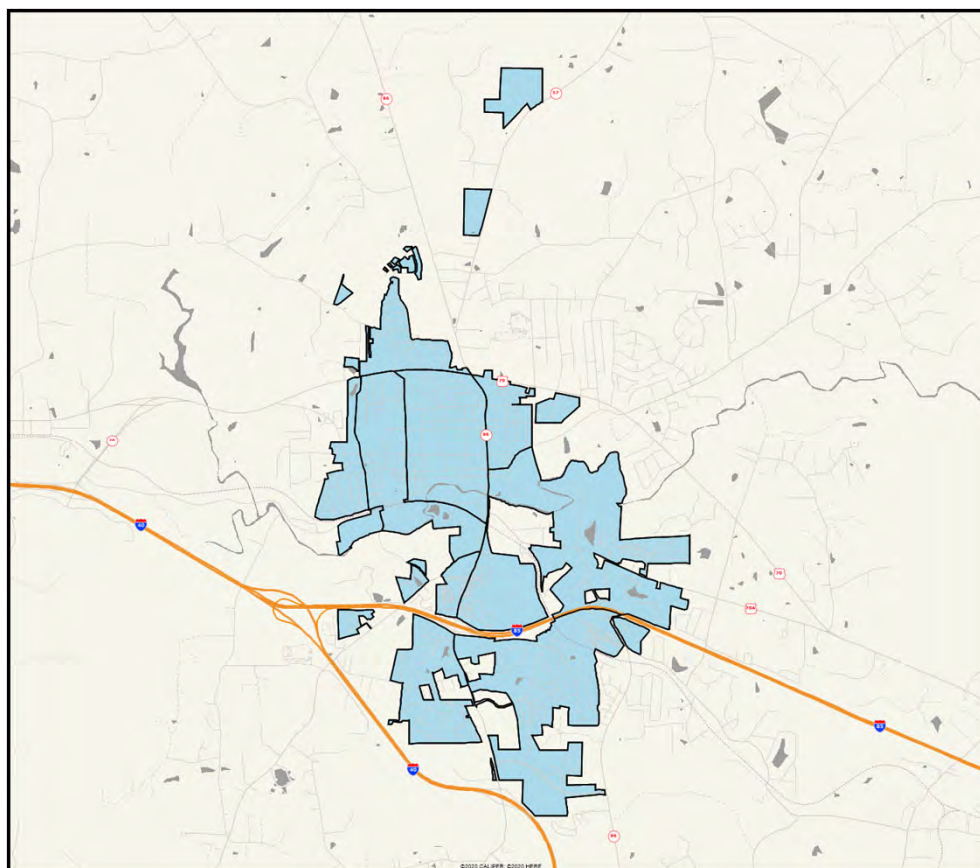
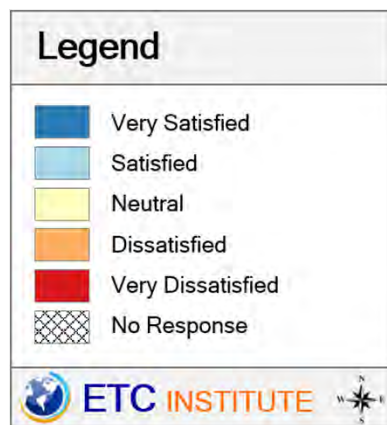
(Shading Reflects the Mean Rating by Census Block Group)



Hillsborough
Community
Survey

Q8-2. Ease of travel by walking to key destinations

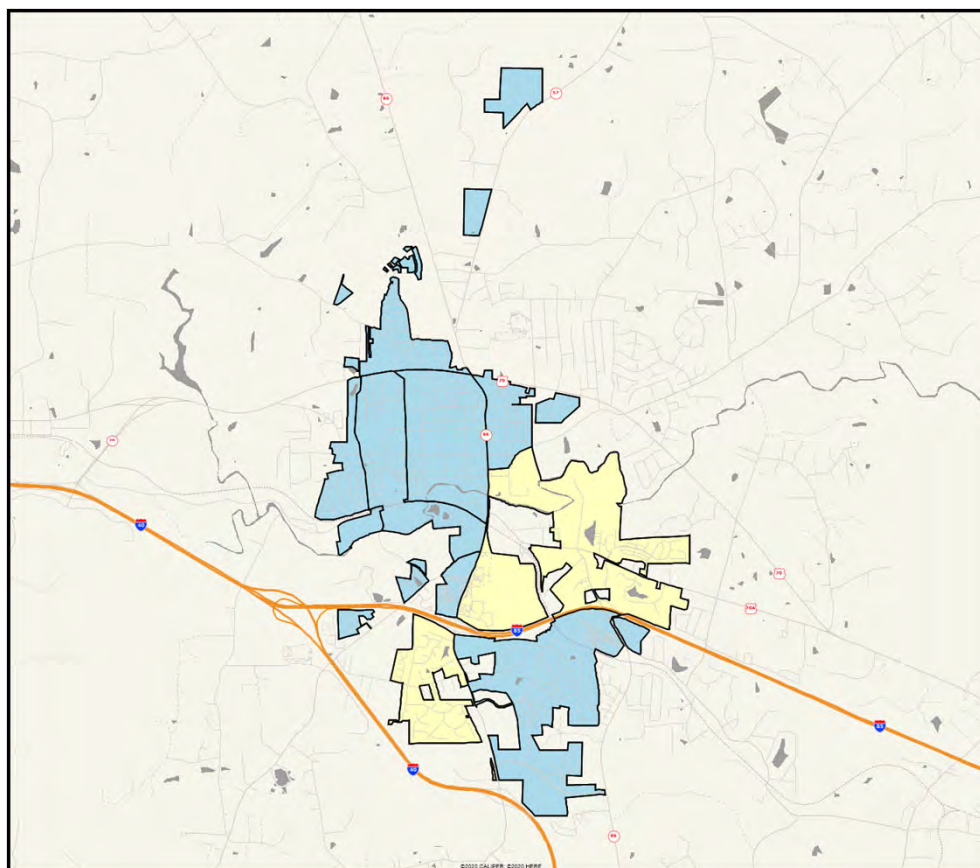
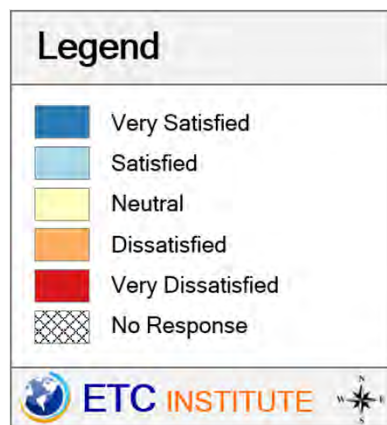
(Shading Reflects the Mean Rating by Census Block Group)



Hillsborough
Community
Survey

Q8-3. Ease of travel by driving to key destinations

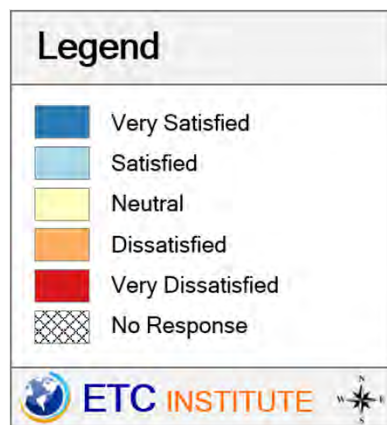
(Shading Reflects the Mean Rating by Census Block Group)



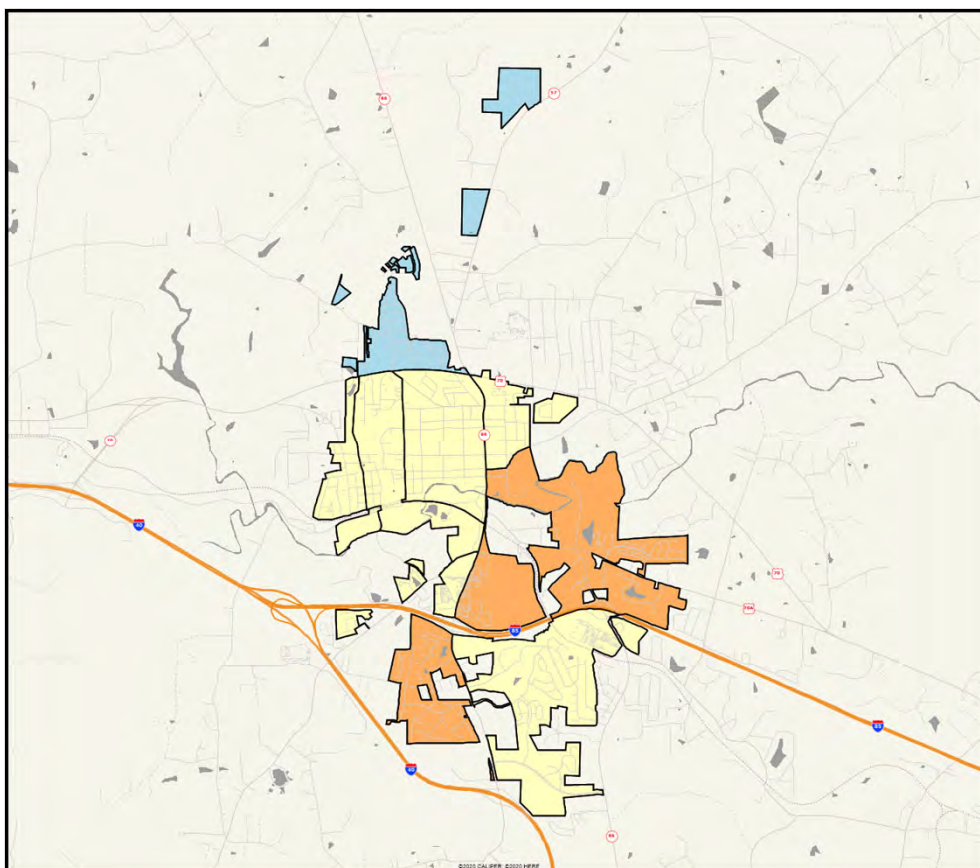
Hillsborough
Community
Survey

Q8-4. Ease of travel by biking to key destinations

(Shading Reflects the Mean Rating by Census Block Group)

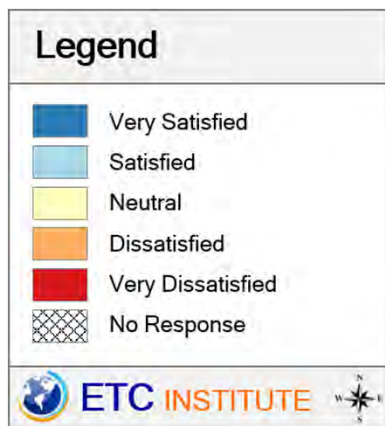


Hillsborough
Community
Survey



Q8-5. Ease of travel by public transit (GoTriangle and Orange County Public Transportation) to key destinations

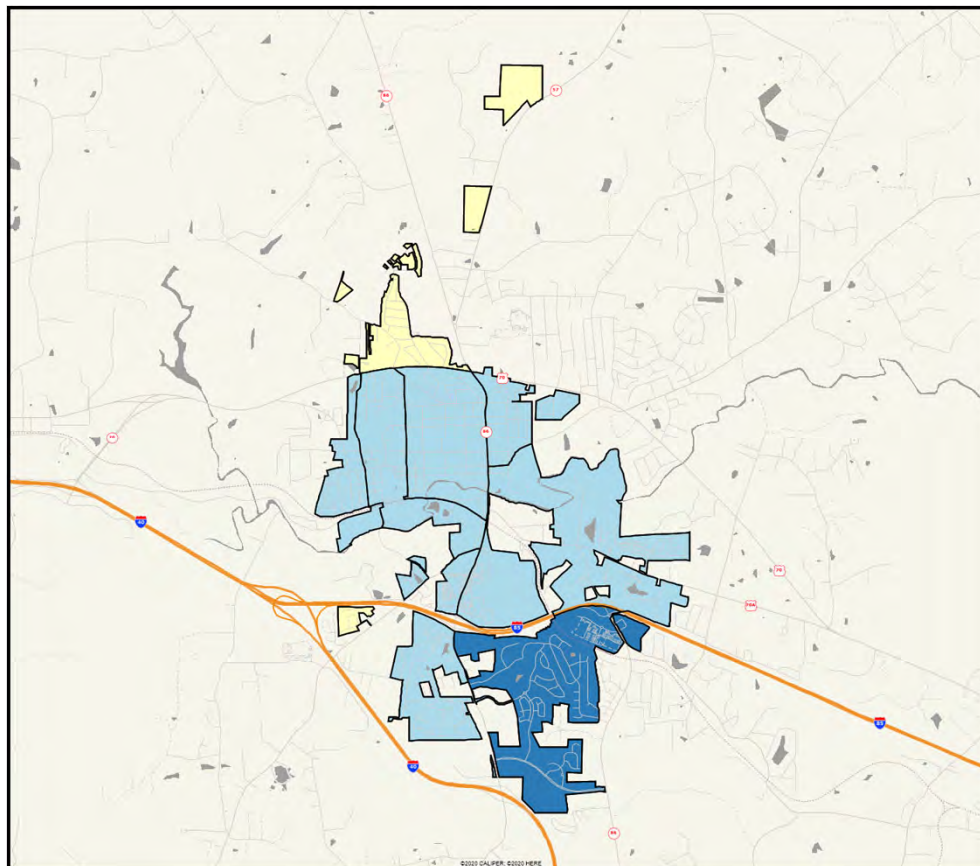
(Shading Reflects the Mean Rating by Census Block Group)



Hillsborough
Community
Survey

Q9-1. Condition of streets in your neighborhood

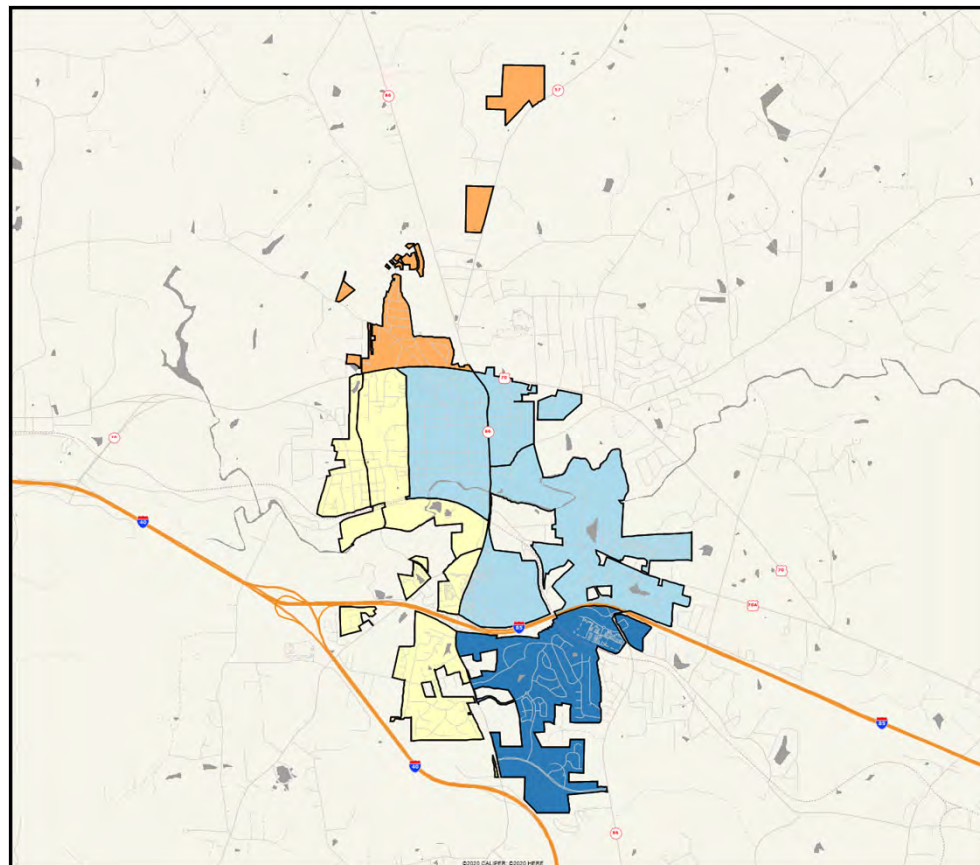
(Shading Reflects the Mean Rating by Census Block Group)



Hillsborough
Community
Survey

Q9-2. Condition of sidewalks in your neighborhood

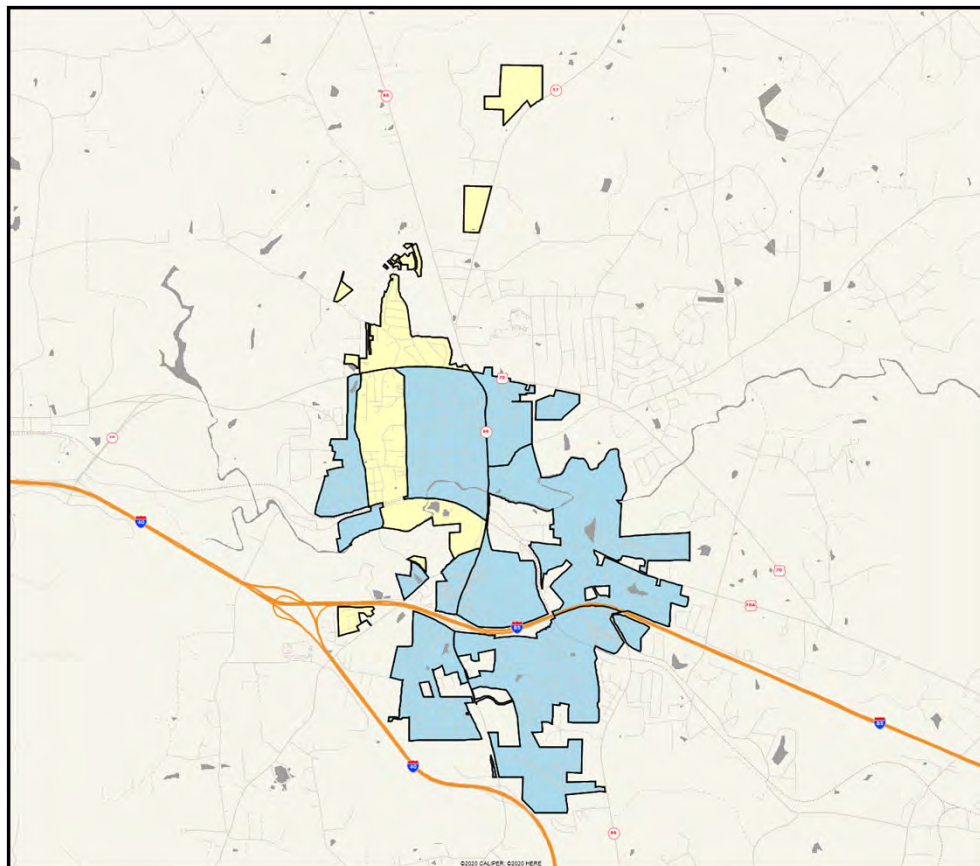
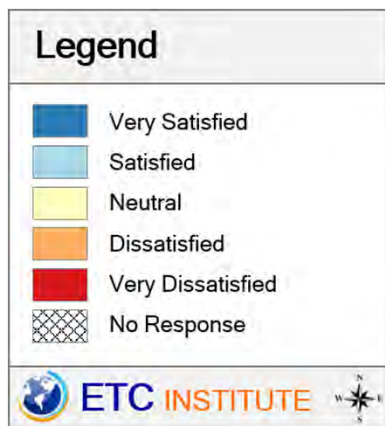
(Shading Reflects the Mean Rating by Census Block Group)



Hillsborough
Community
Survey

Q9-3. Cleanliness and appearance of medians and roadsides

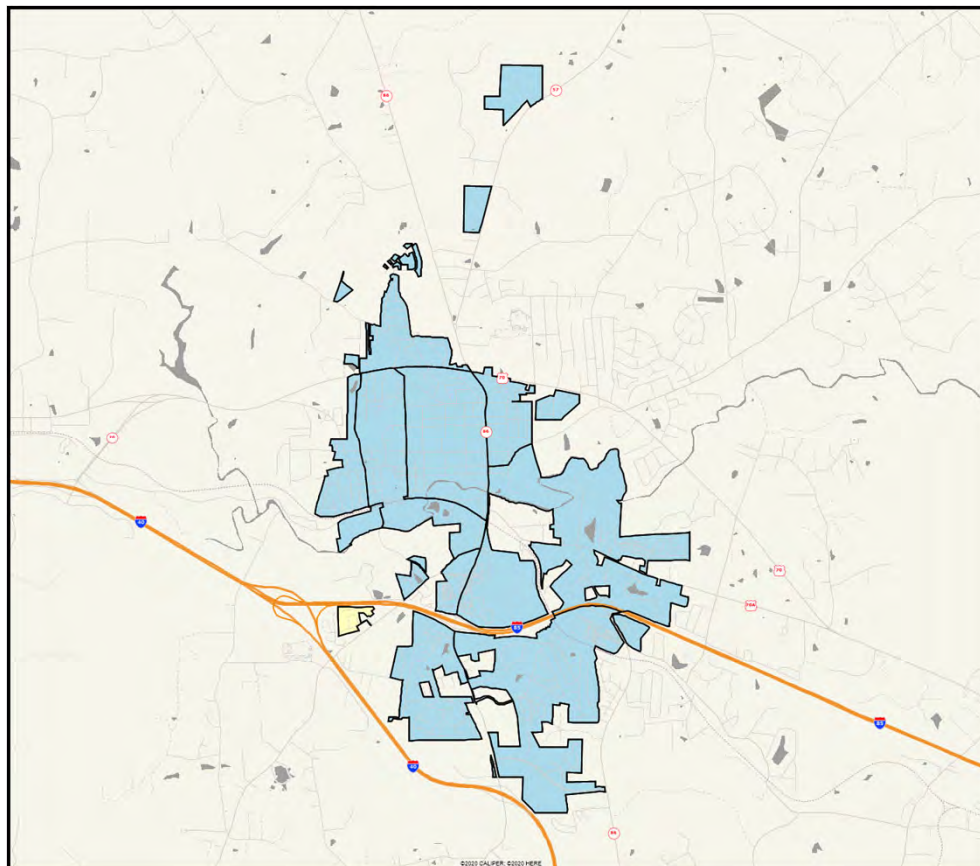
(Shading Reflects the Mean Rating by Census Block Group)



Hillsborough
Community
Survey

Q9-4. Mowing and tree trimming along streets and other public areas

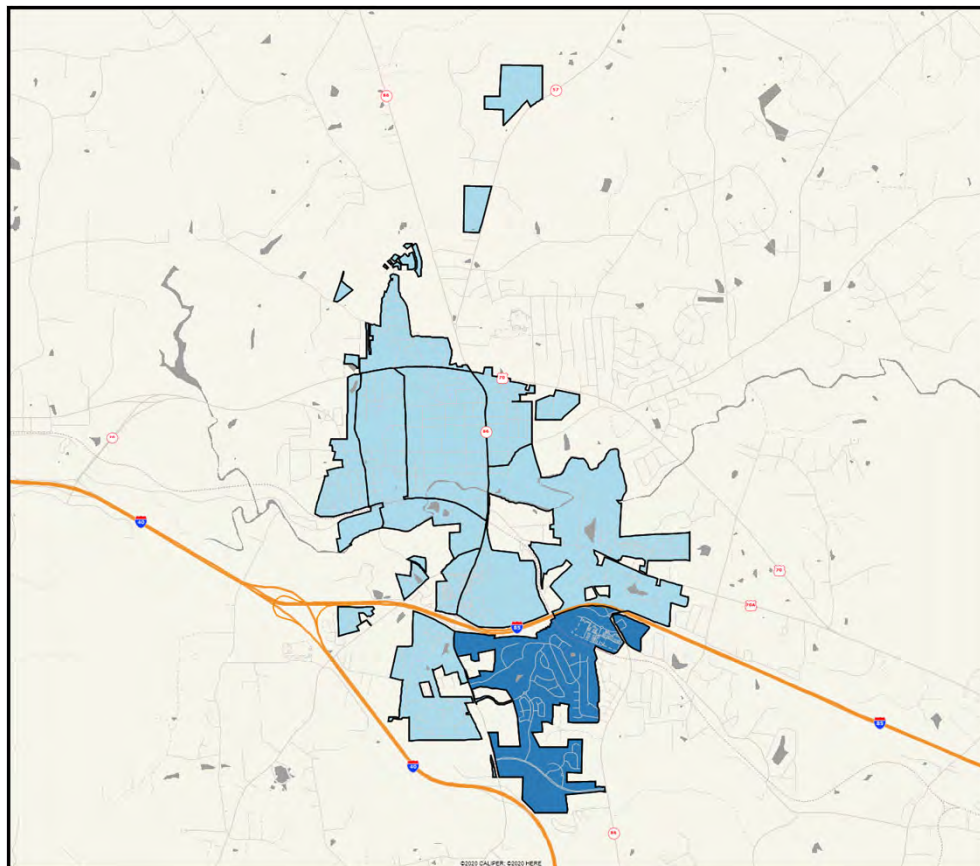
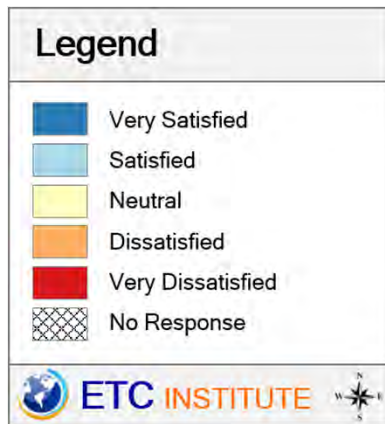
(Shading Reflects the Mean Rating by Census Block Group)



Hillsborough
Community
Survey

Q9-5. Adequacy of street lighting in your neighborhood

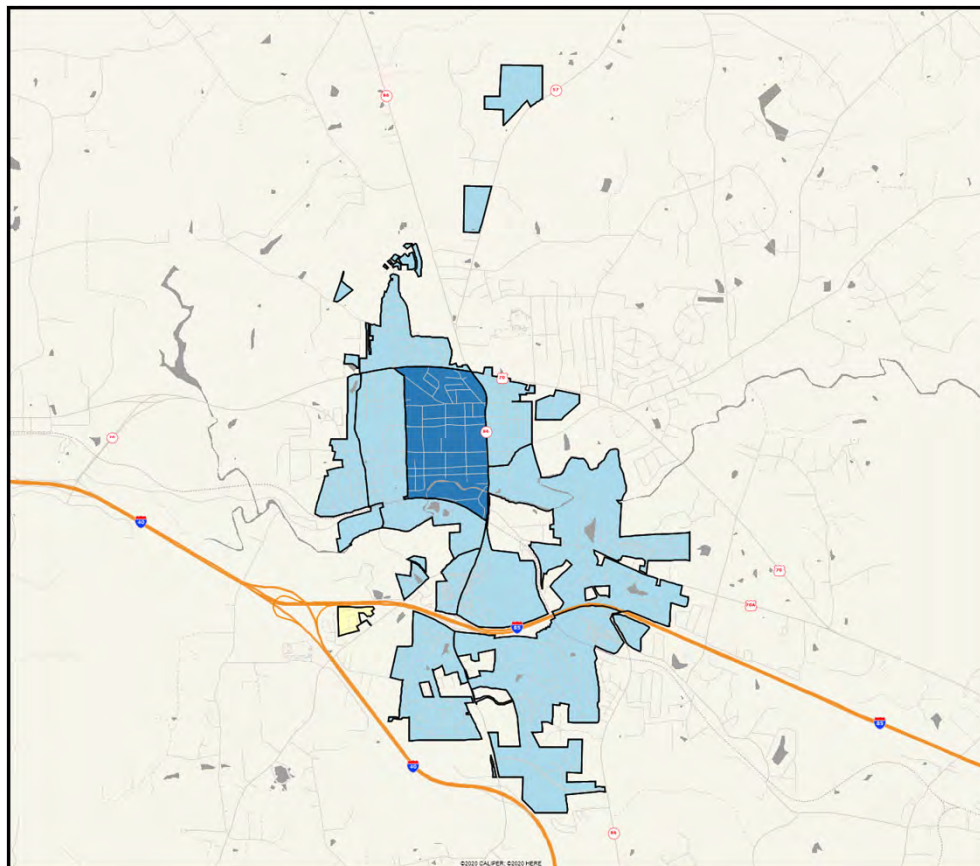
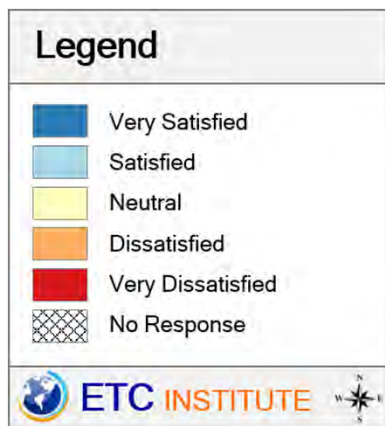
(Shading Reflects the Mean Rating by Census Block Group)



Hillsborough
Community
Survey

Q9-6. Winter weather response on town-maintained streets

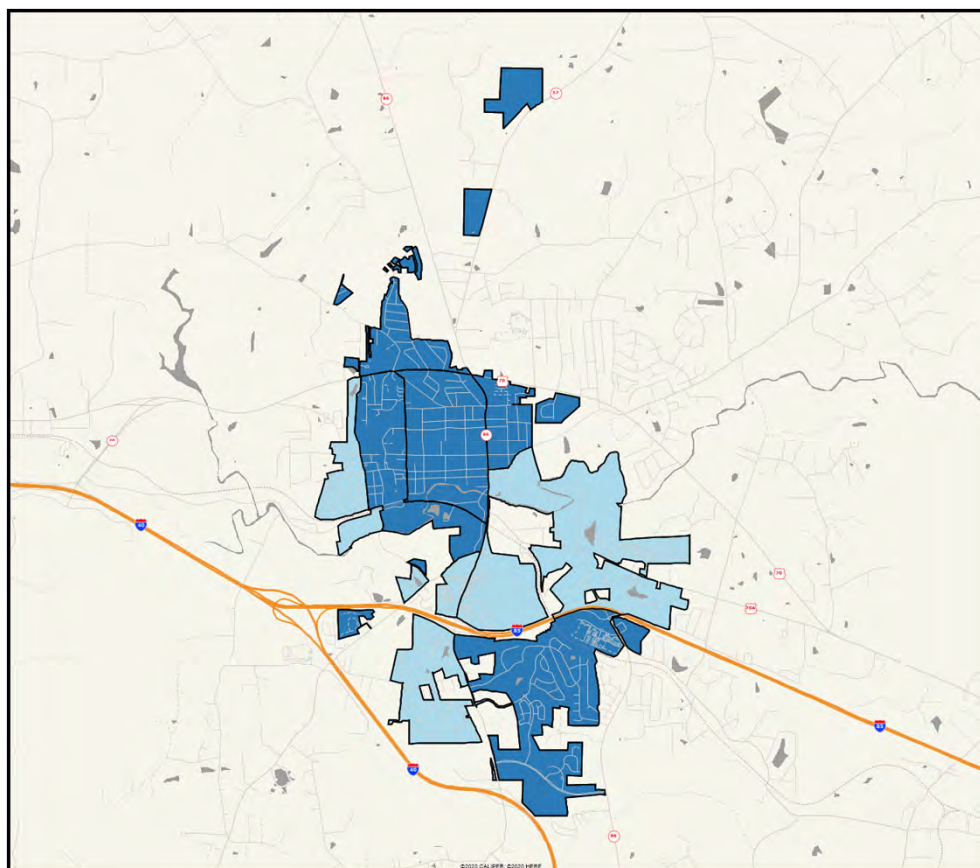
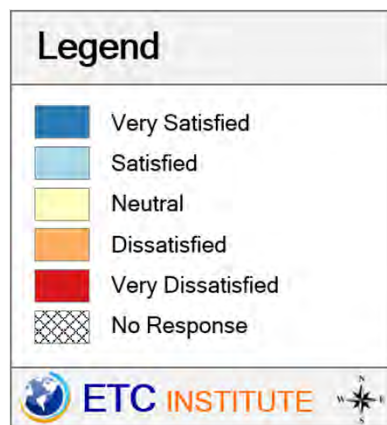
(Shading Reflects the Mean Rating by Census Block Group)



Hillsborough
Community
Survey

Q9-7. Condition of parks

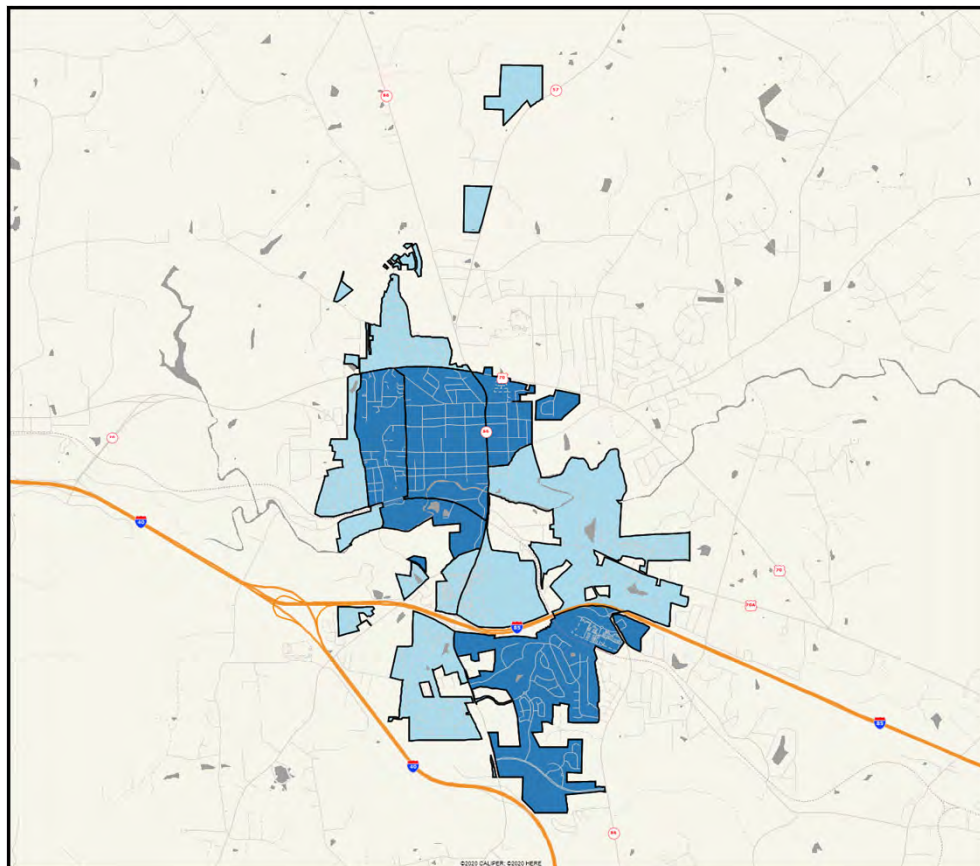
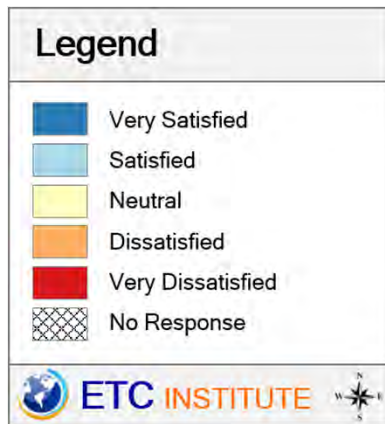
(Shading Reflects the Mean Rating by Census Block Group)



Hillsborough
Community
Survey

Q9-8. Condition of greenways

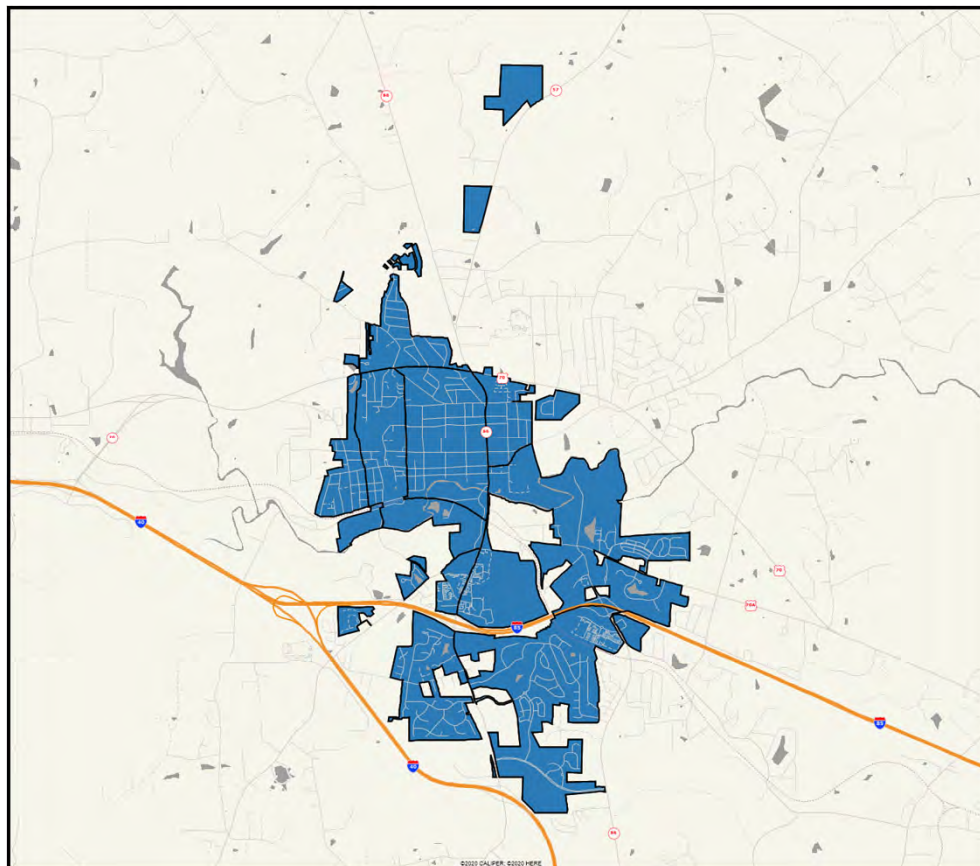
(Shading Reflects the Mean Rating by Census Block Group)



Hillsborough
Community
Survey

Q11-01. Solid waste collection services

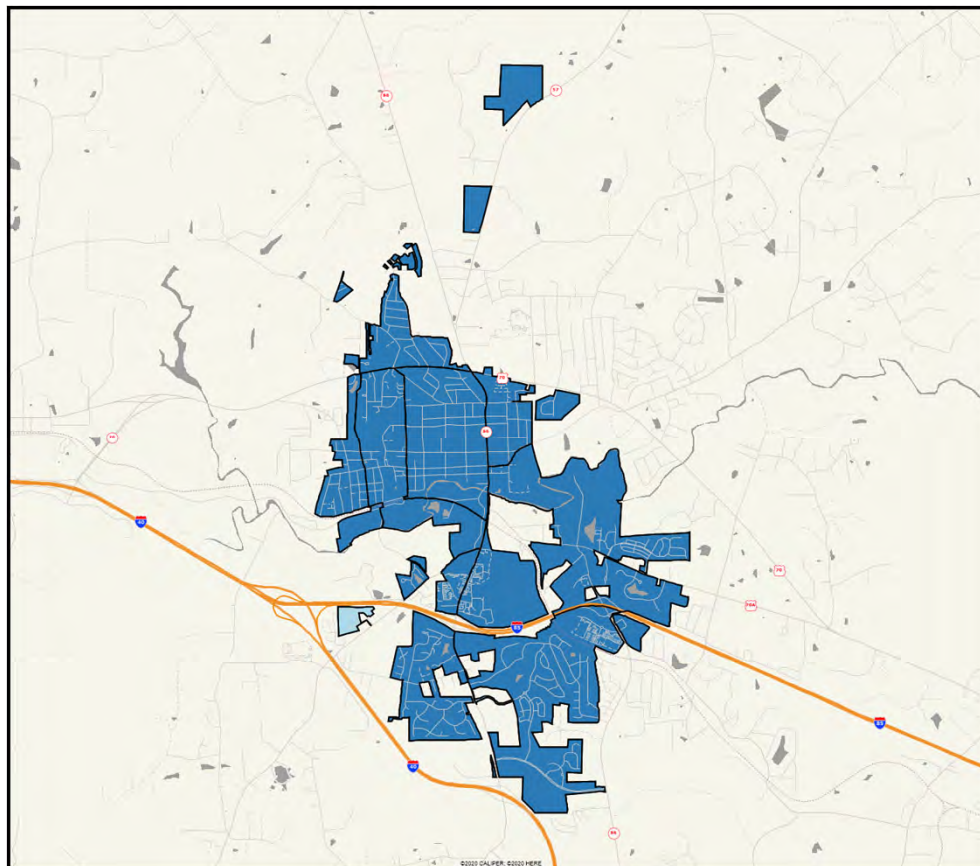
(Shading Reflects the Mean Rating by Census Block Group)



Hillsborough
Community
Survey

Q11-02. Residential bulk trash collection

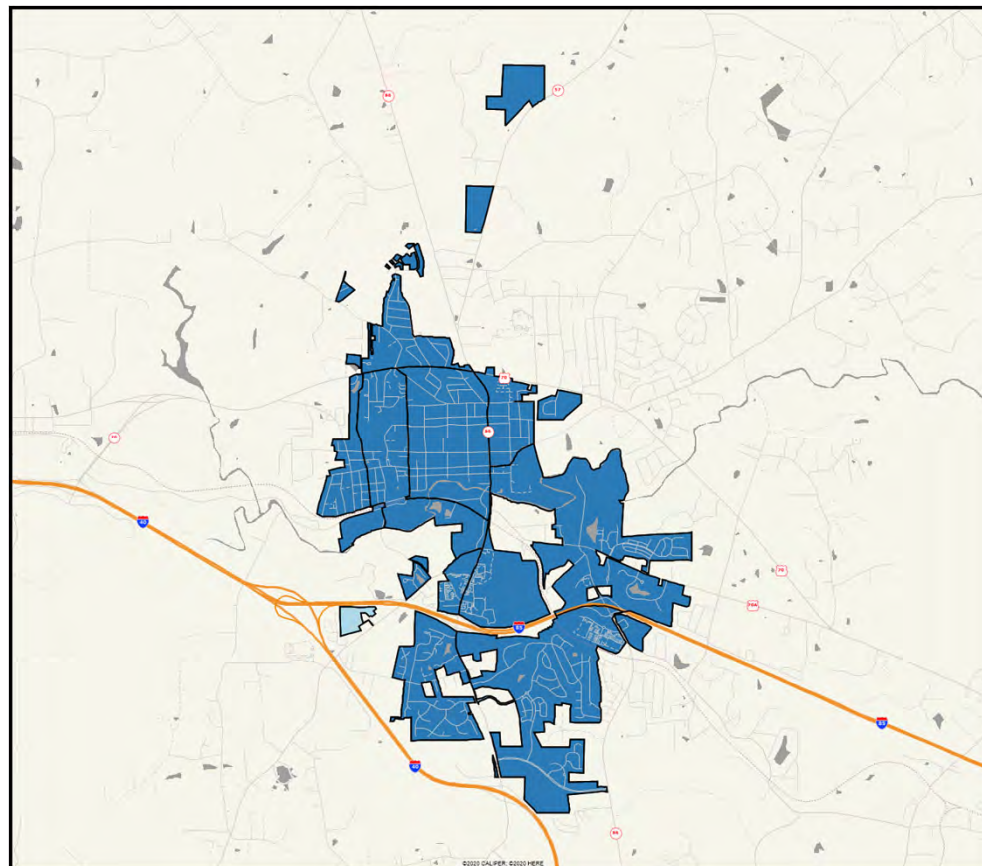
(Shading Reflects the Mean Rating by Census Block Group)



Hillsborough
Community
Survey

Q11-03. Yard waste (leaves/tree limbs) collection services

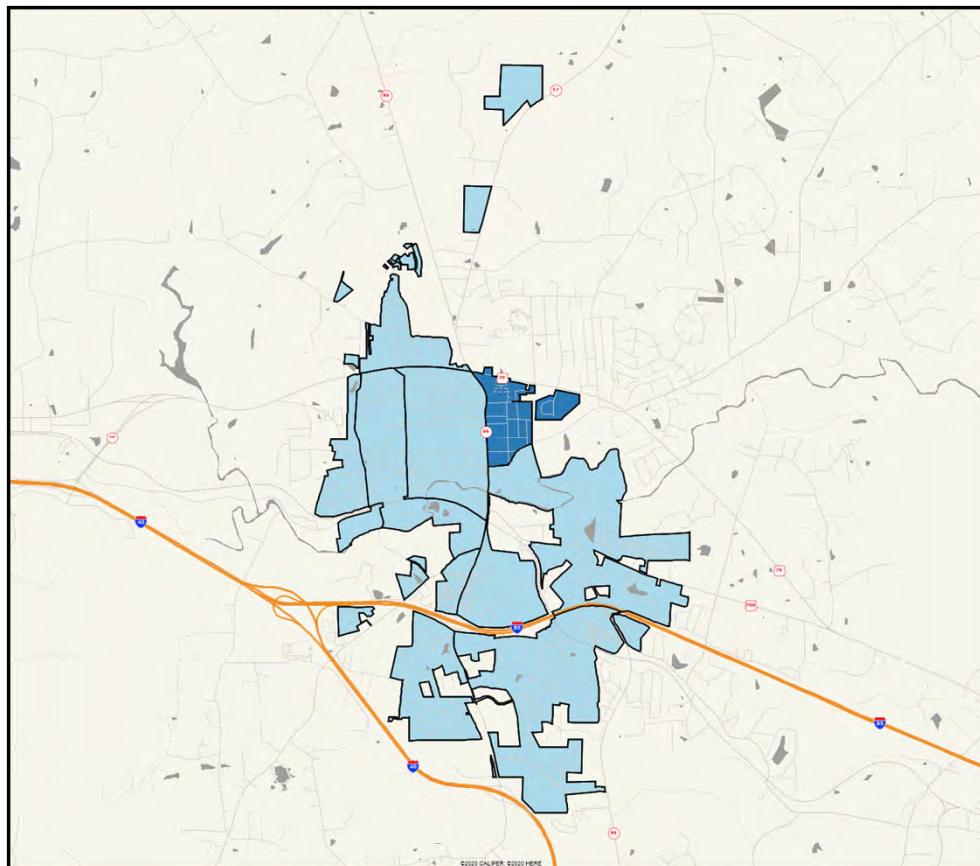
(Shading Reflects the Mean Rating by Census Block Group)



Hillsborough
Community
Survey

Q11-04. Quality of drinking water

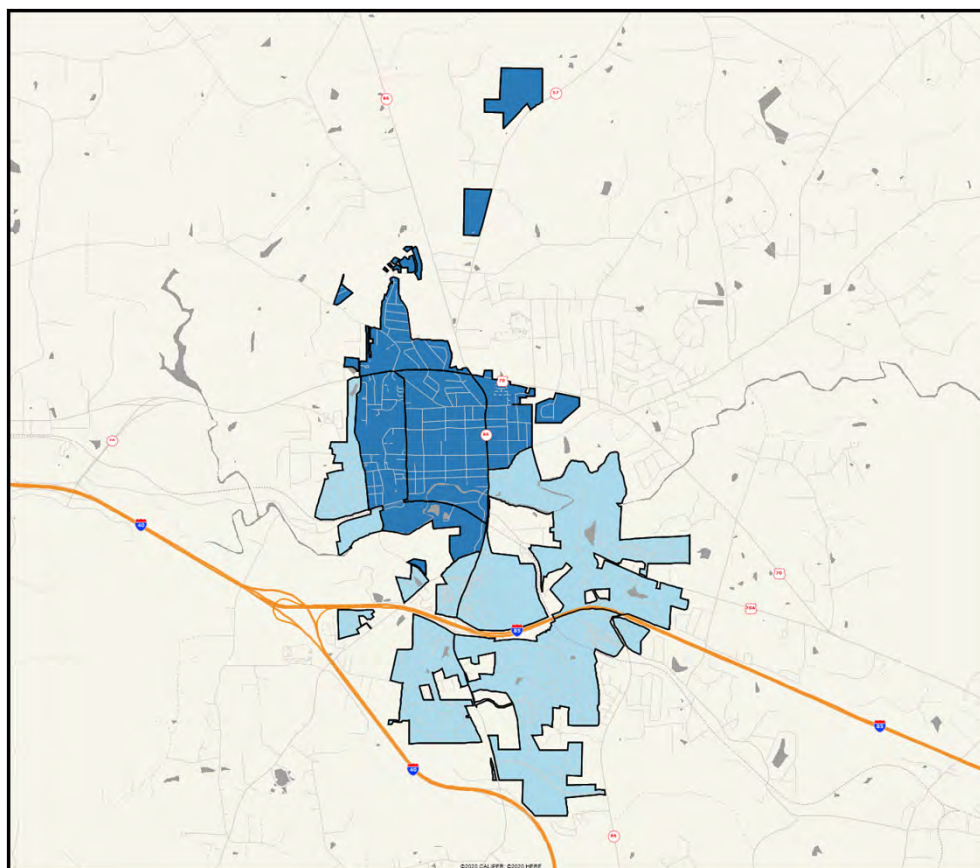
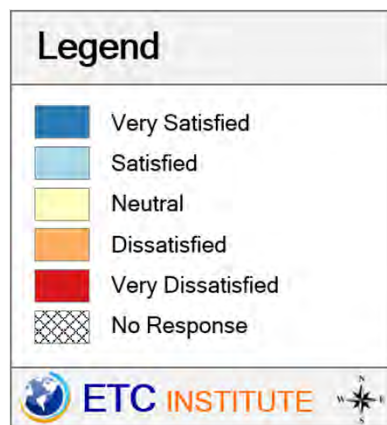
(Shading Reflects the Mean Rating by Census Block Group)



Hillsborough
Community
Survey

Q11-05. Sewer services

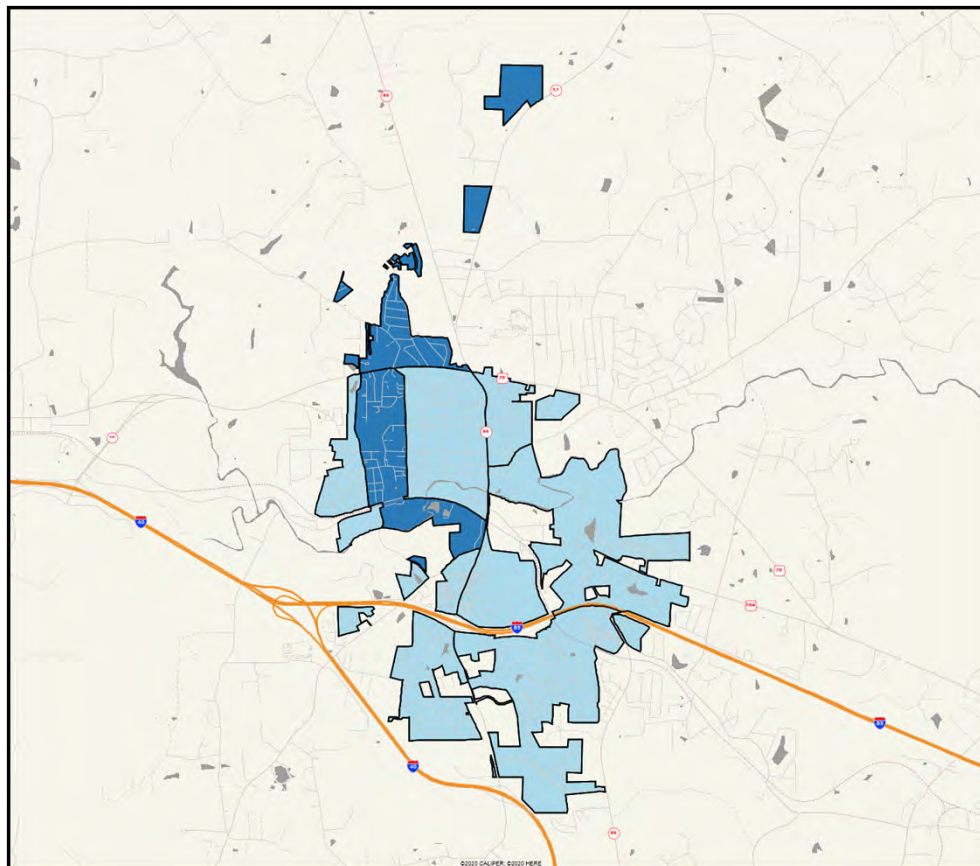
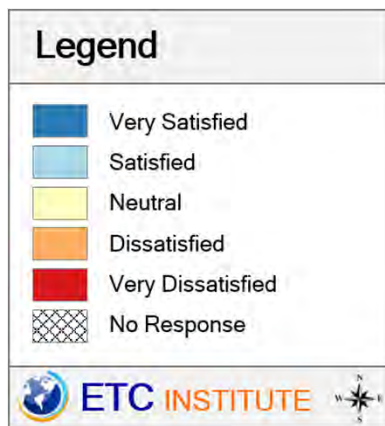
(Shading Reflects the Mean Rating by Census Block Group)



Hillsborough
Community
Survey

Q11-06. Eno River protection

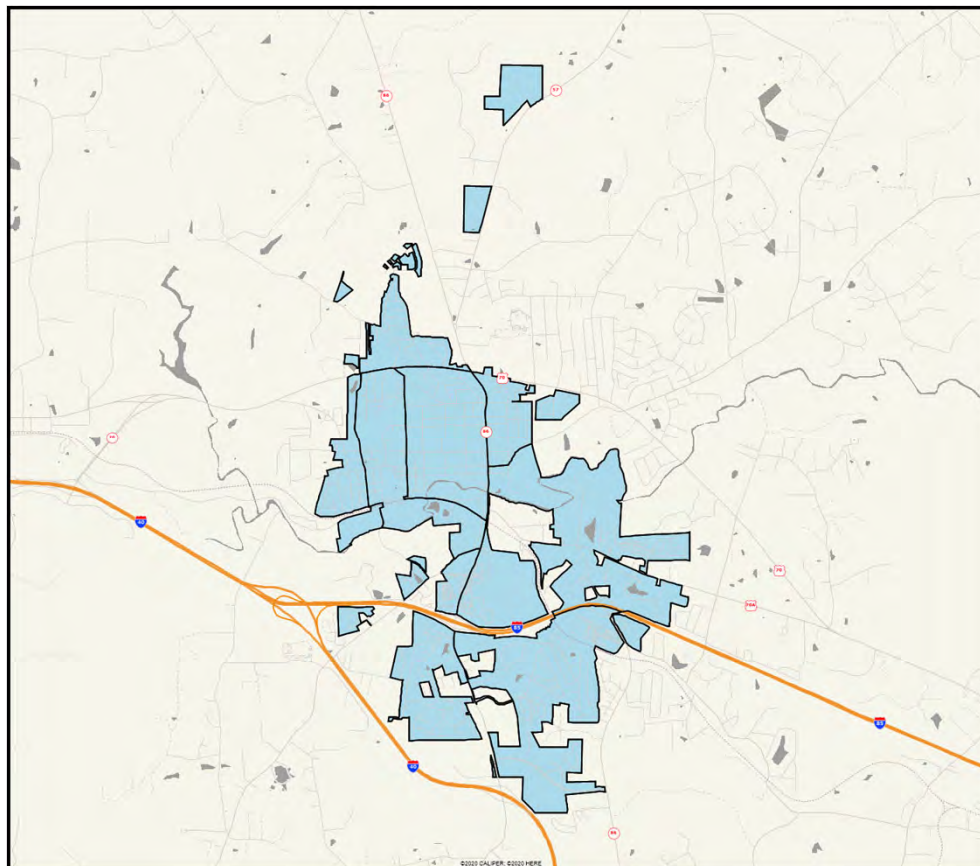
(Shading Reflects the Mean Rating by Census Block Group)



Hillsborough
Community
Survey

Q11-07. Drainage of town streets

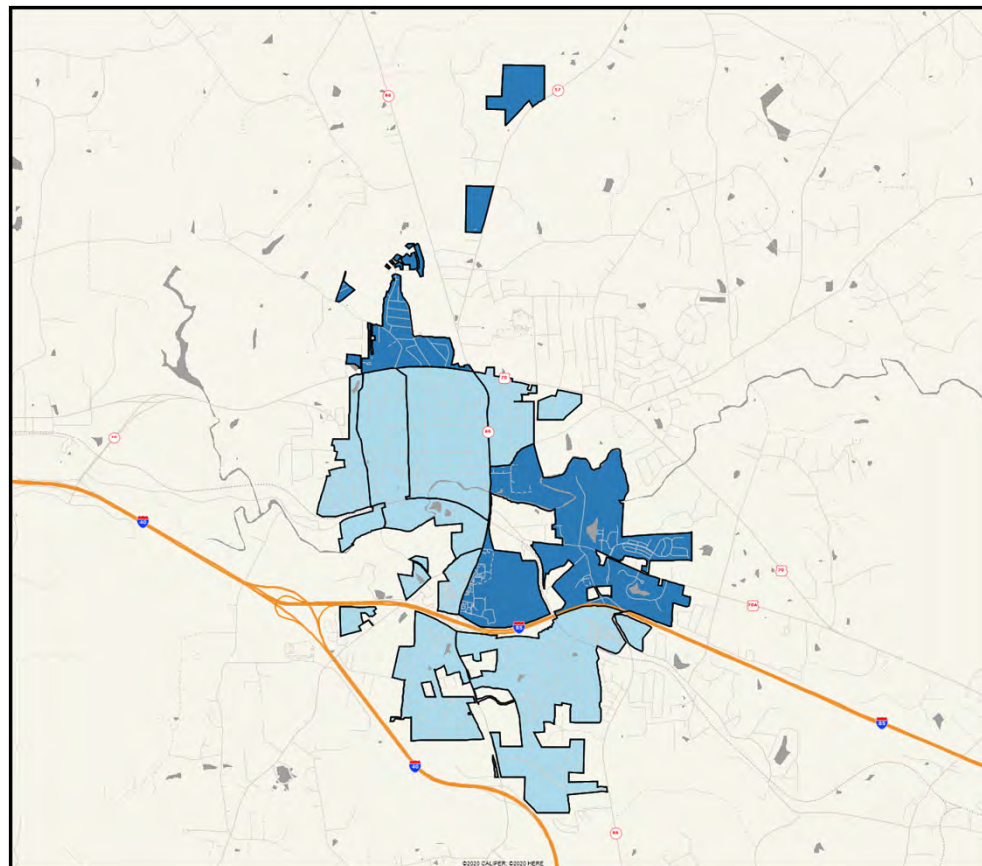
(Shading Reflects the Mean Rating by Census Block Group)



Hillsborough
Community
Survey

Q11-08. Ease of paying water and sewer bill

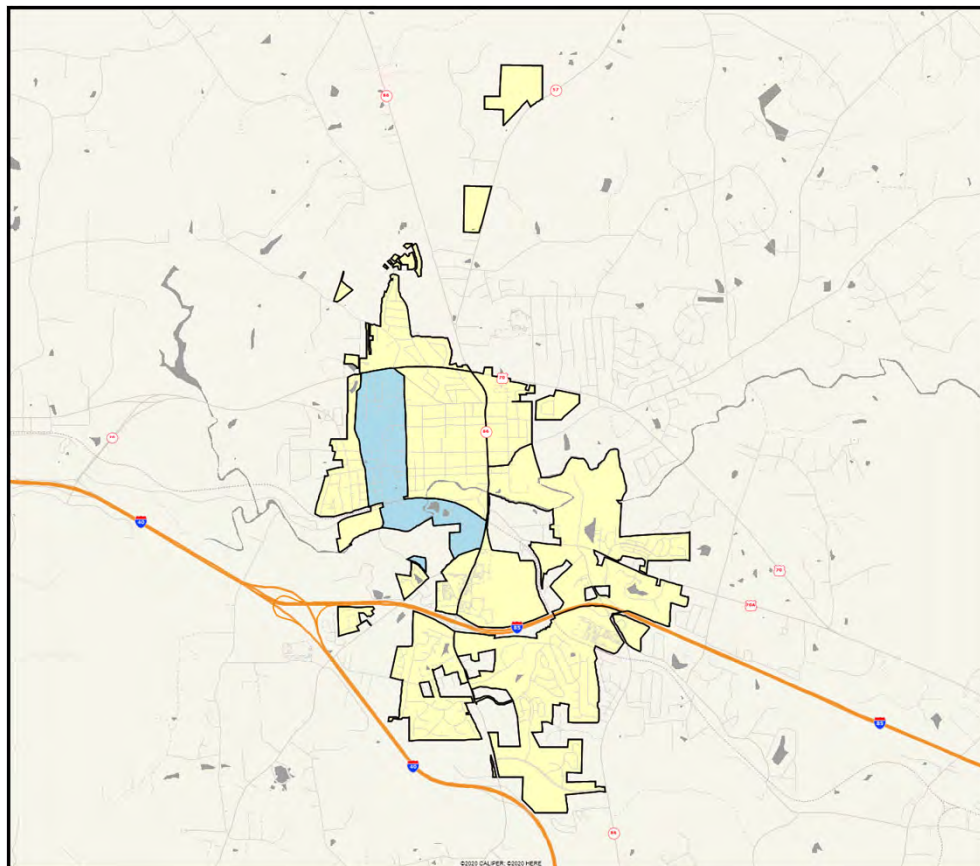
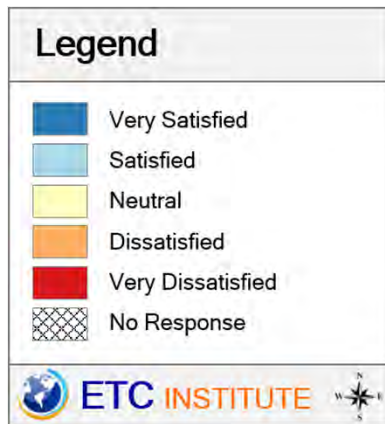
(Shading Reflects the Mean Rating by Census Block Group)



Hillsborough
Community
Survey

Q11-09. What you are charged for water and sewer services

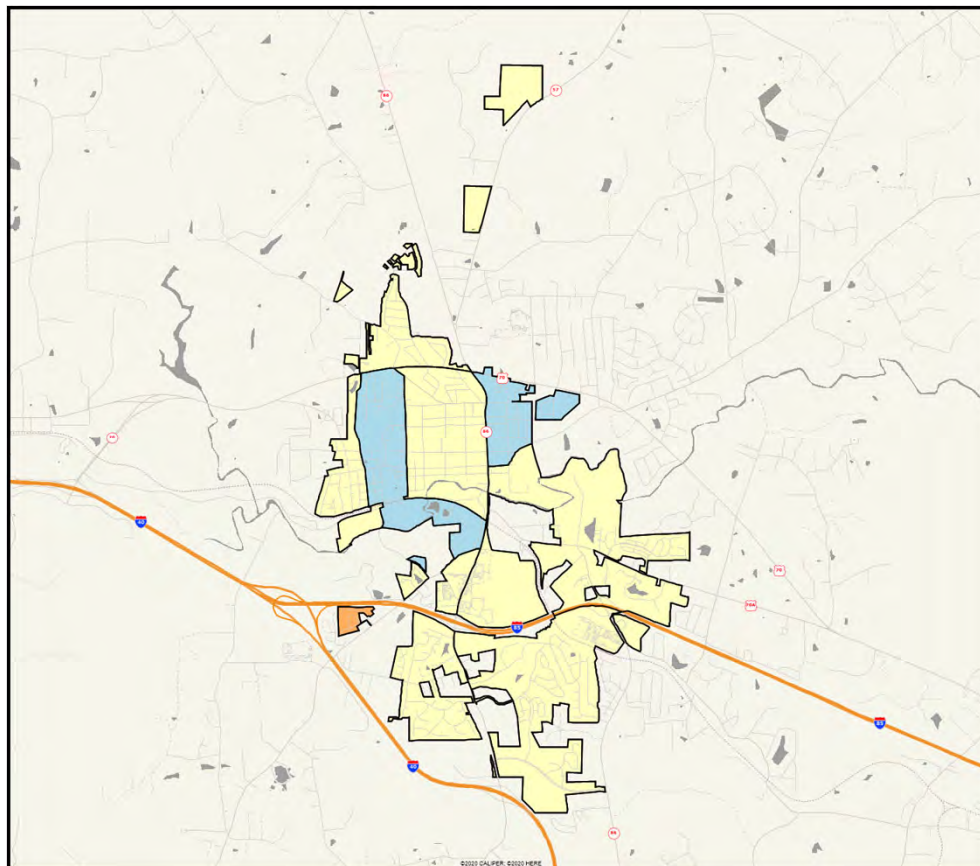
(Shading Reflects the Mean Rating by Census Block Group)



Hillsborough
Community
Survey

Q11-10. What you are charged for stormwater services

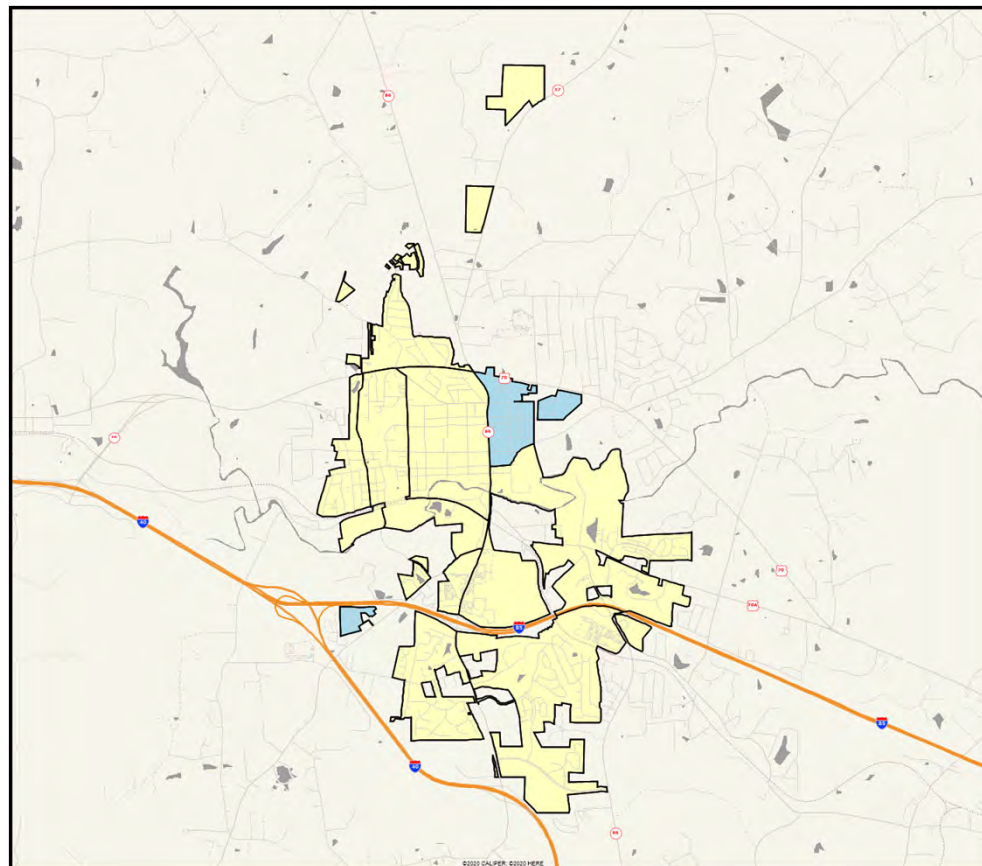
(Shading Reflects the Mean Rating by Census Block Group)



Hillsborough
Community
Survey

Q12-1. Amount of trees and shrubs retained and/or replaced on new development

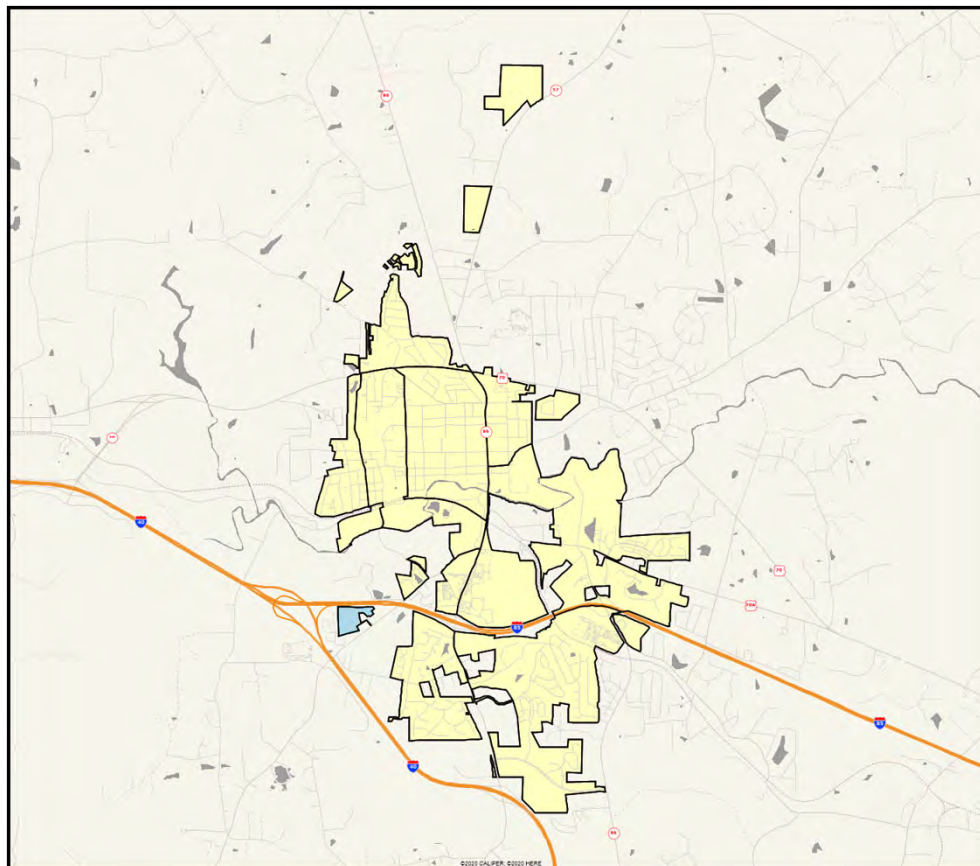
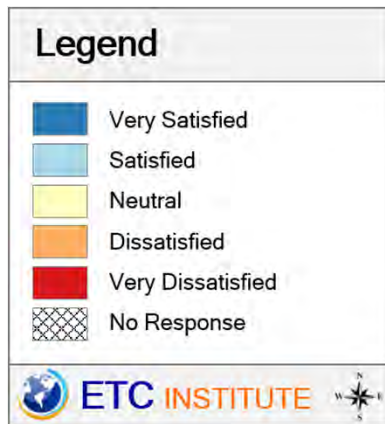
(Shading Reflects the Mean Rating by Census Block Group)



Hillsborough
Community
Survey

Q12-2. Overall quality of recent residential development in Hillsborough

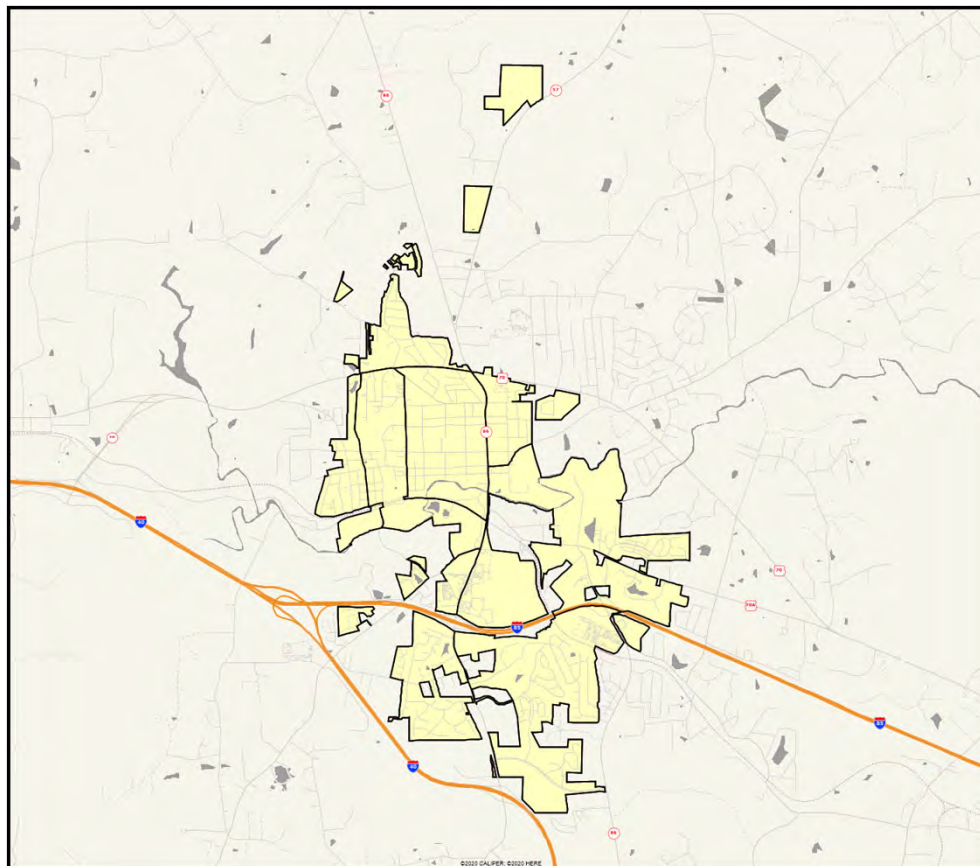
(Shading Reflects the Mean Rating by Census Block Group)



Hillsborough
Community
Survey

Q12-3. Overall quality of recent commercial development in Hillsborough

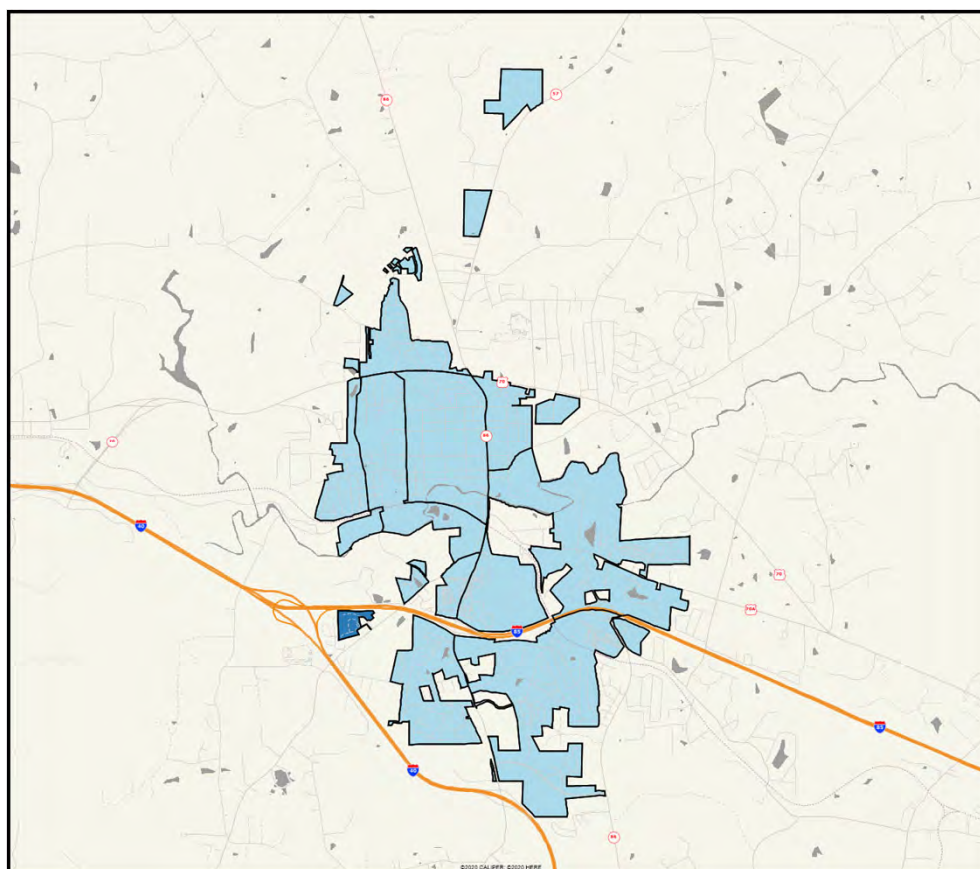
(Shading Reflects the Mean Rating by Census Block Group)



Hillsborough
Community
Survey

Q12-4. Protection of historic district and local landmarks

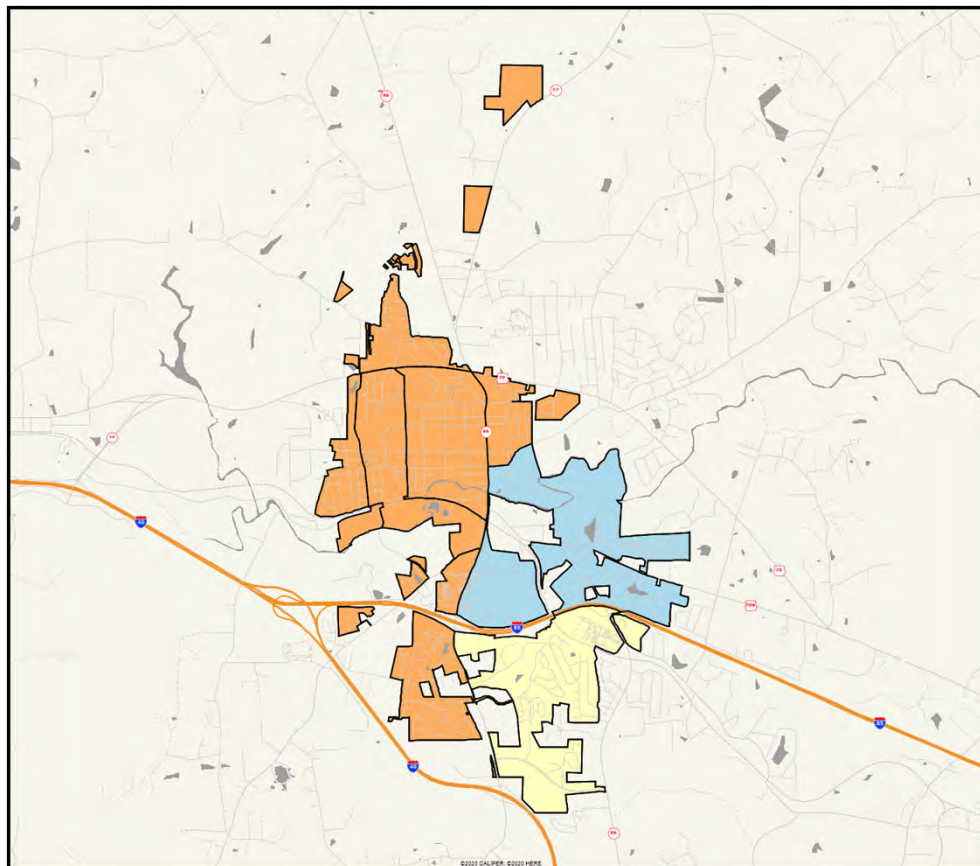
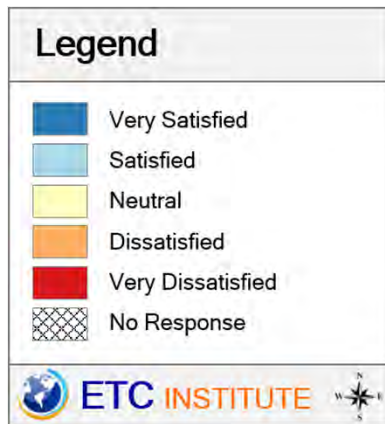
(Shading Reflects the Mean Rating by Census Block Group)



Hillsborough
Community
Survey

Q12-5. Ability to find housing you can afford in Hillsborough

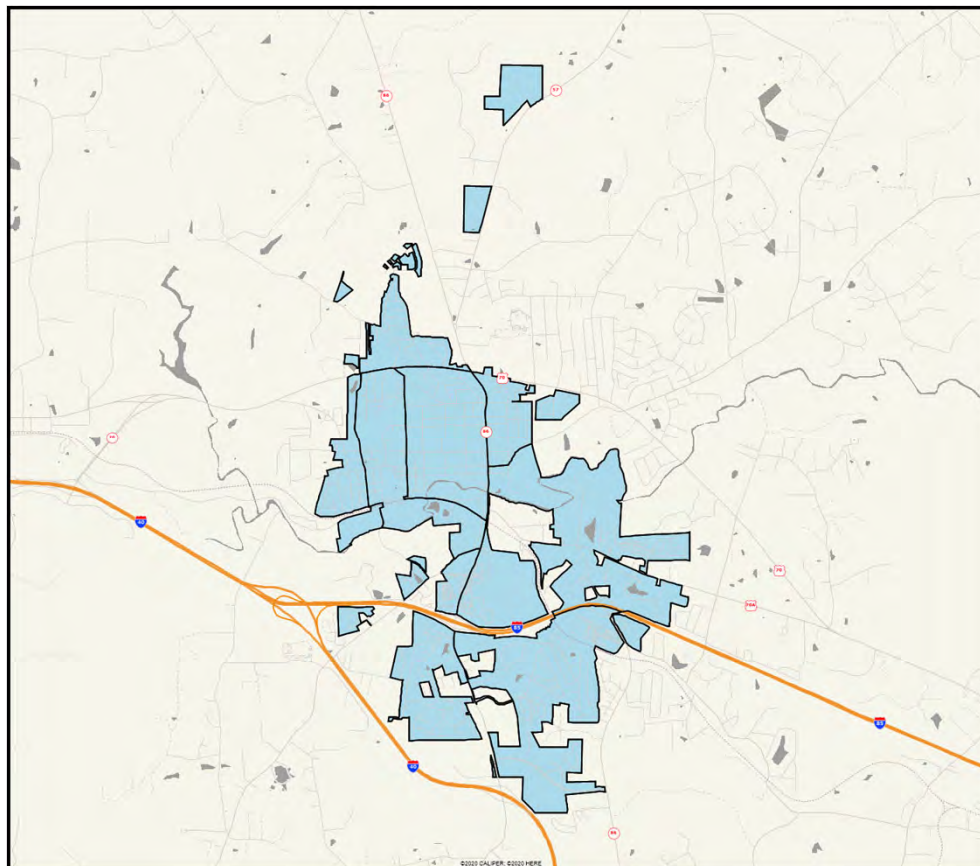
(Shading Reflects the Mean Rating by Census Block Group)



Hillsborough
Community
Survey

Q15-1. Availability of information about town programs and services

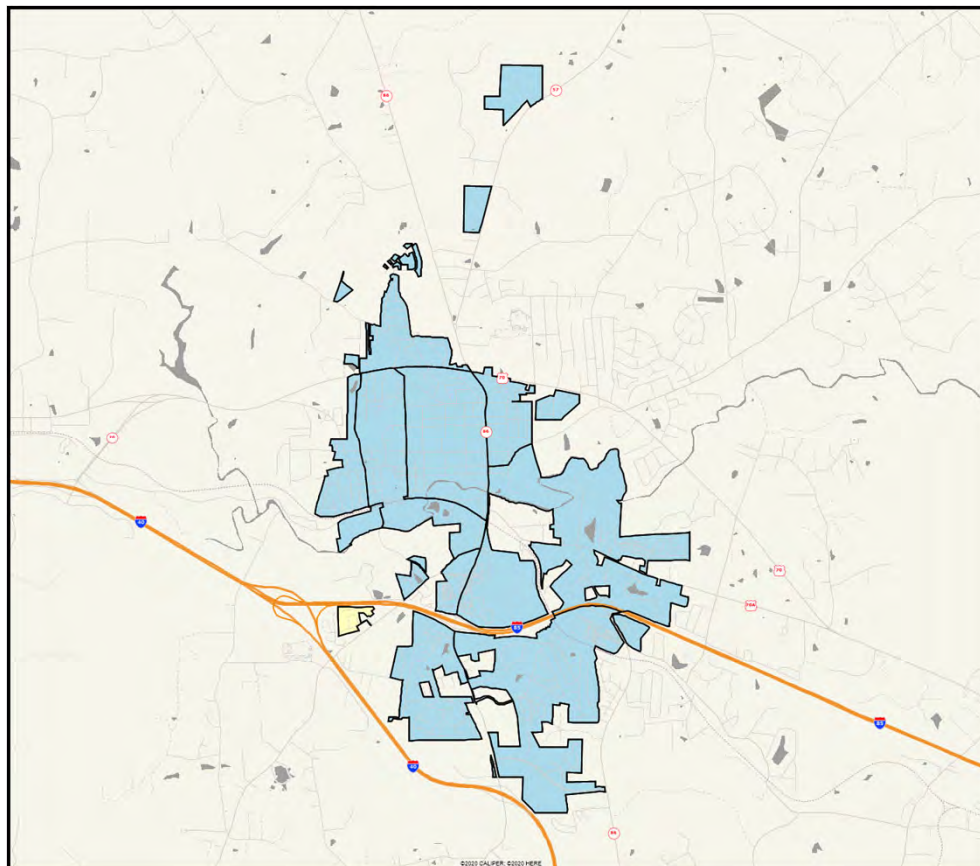
(Shading Reflects the Mean Rating by Census Block Group)



Hillsborough
Community
Survey

Q15-2. Town efforts to keep you informed about local issues

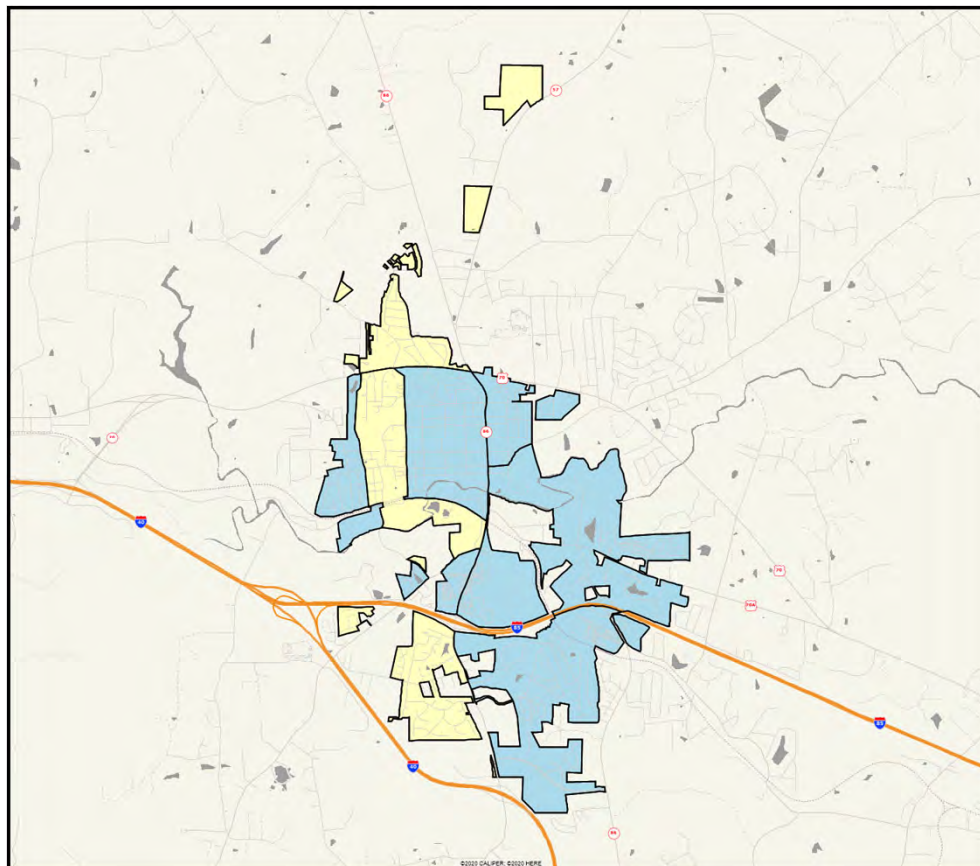
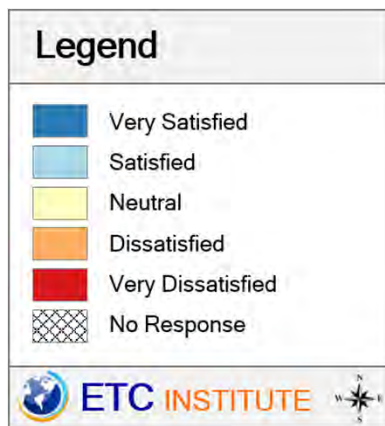
(Shading Reflects the Mean Rating by Census Block Group)



Hillsborough
Community
Survey

Q15-3. Level of public involvement in local decisions

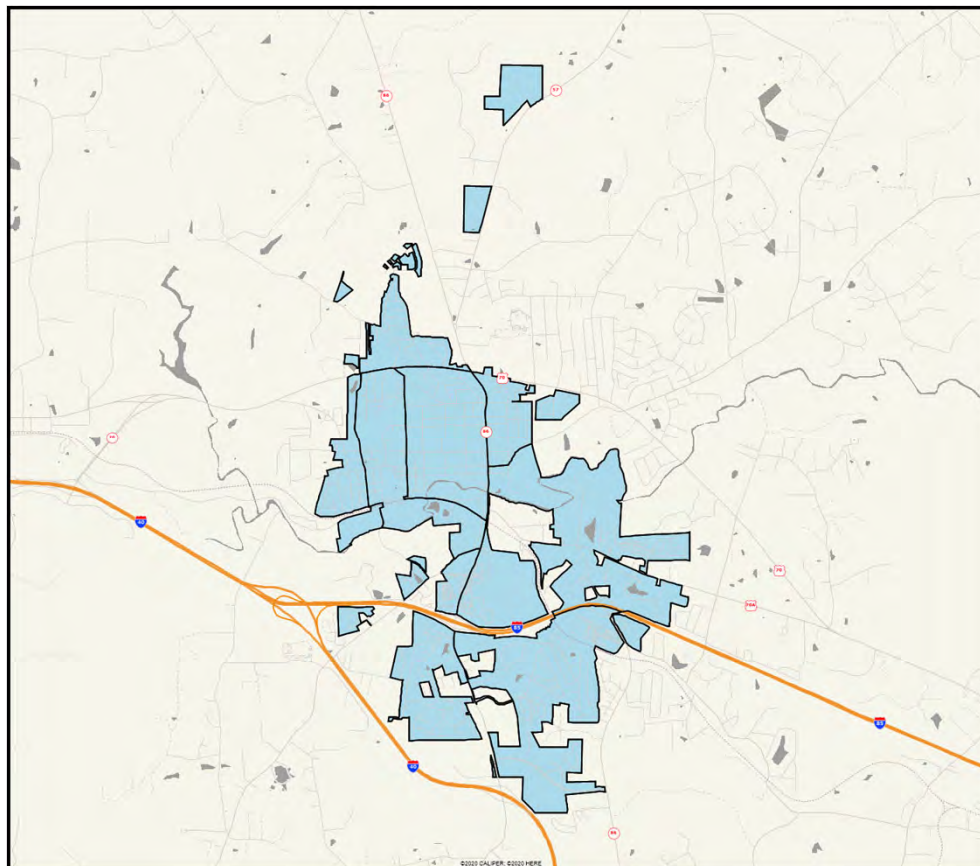
(Shading Reflects the Mean Rating by Census Block Group)



Hillsborough
Community
Survey

Q15-4. Quality of social media outlets

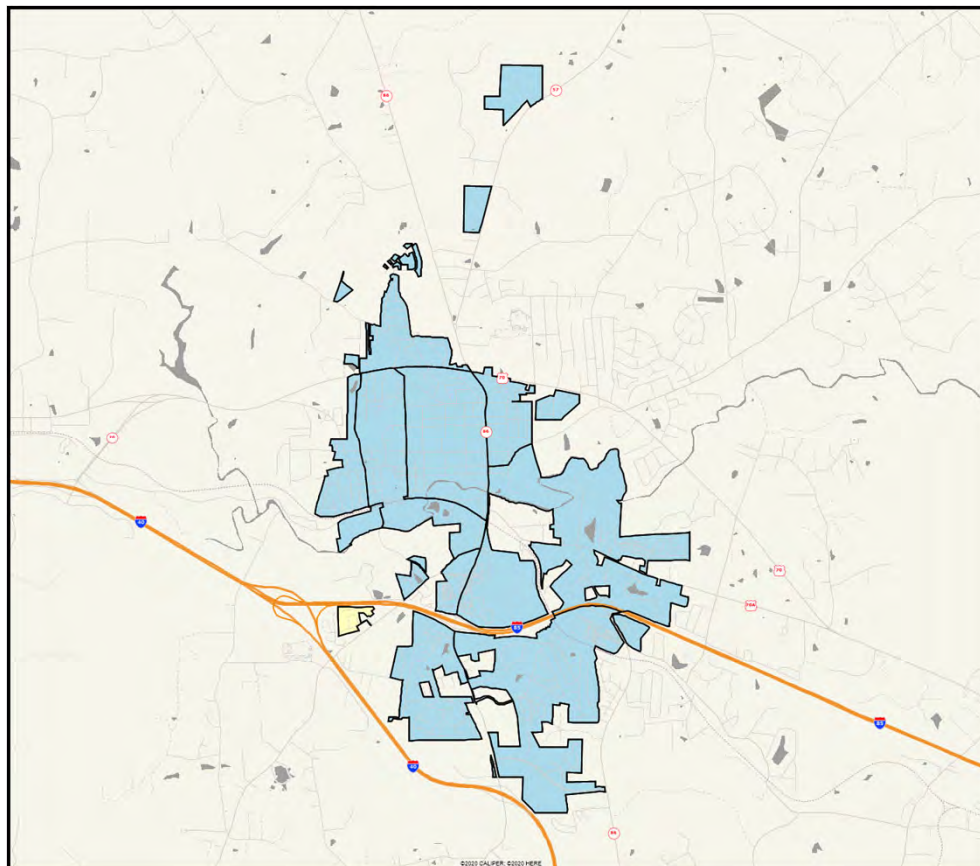
(Shading Reflects the Mean Rating by Census Block Group)



Hillsborough
Community
Survey

Q15-5. Community newsletter (with water and sewer bill)

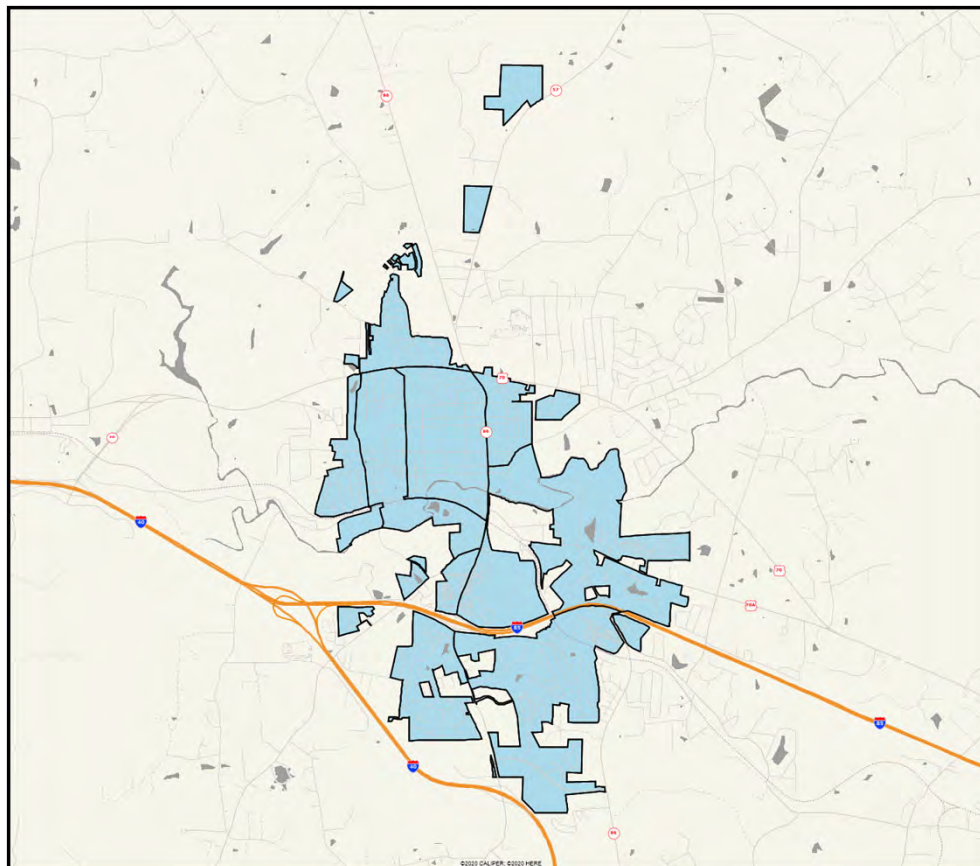
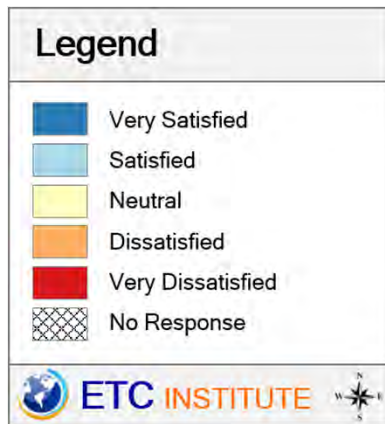
(Shading Reflects the Mean Rating by Census Block Group)



Hillsborough
Community
Survey

Q15-6. Overall usefulness of the Hillsborough website

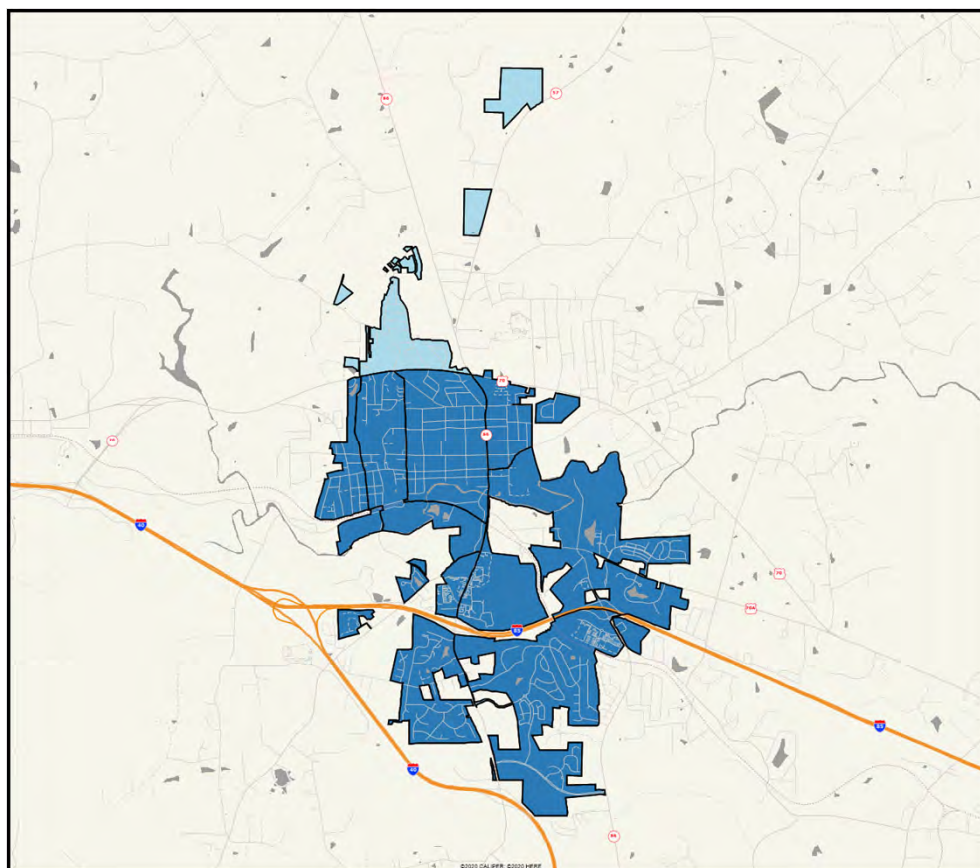
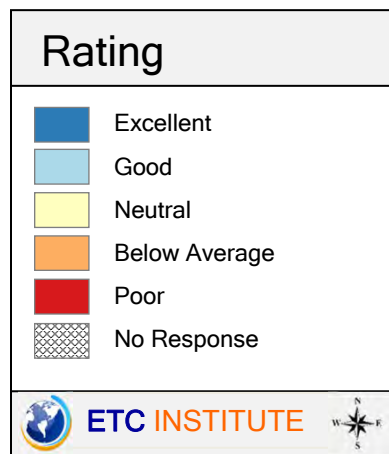
(Shading Reflects the Mean Rating by Census Block Group)



Hillsborough
Community
Survey

Q19-1. As a place to live

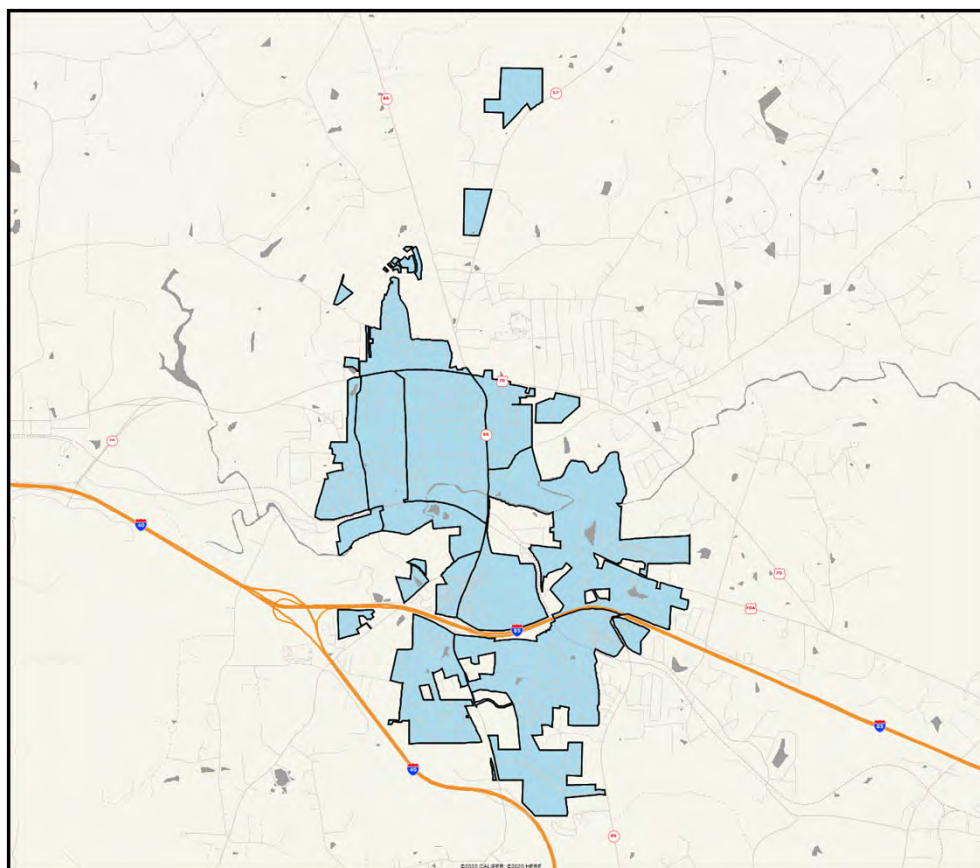
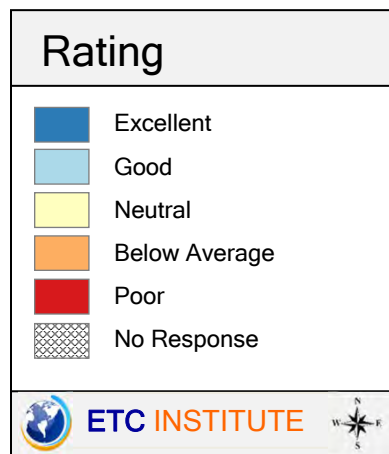
(Shading Reflects the Mean Rating by Census Block Group)



Hillsborough Community Survey

Q19-2. As a place to work

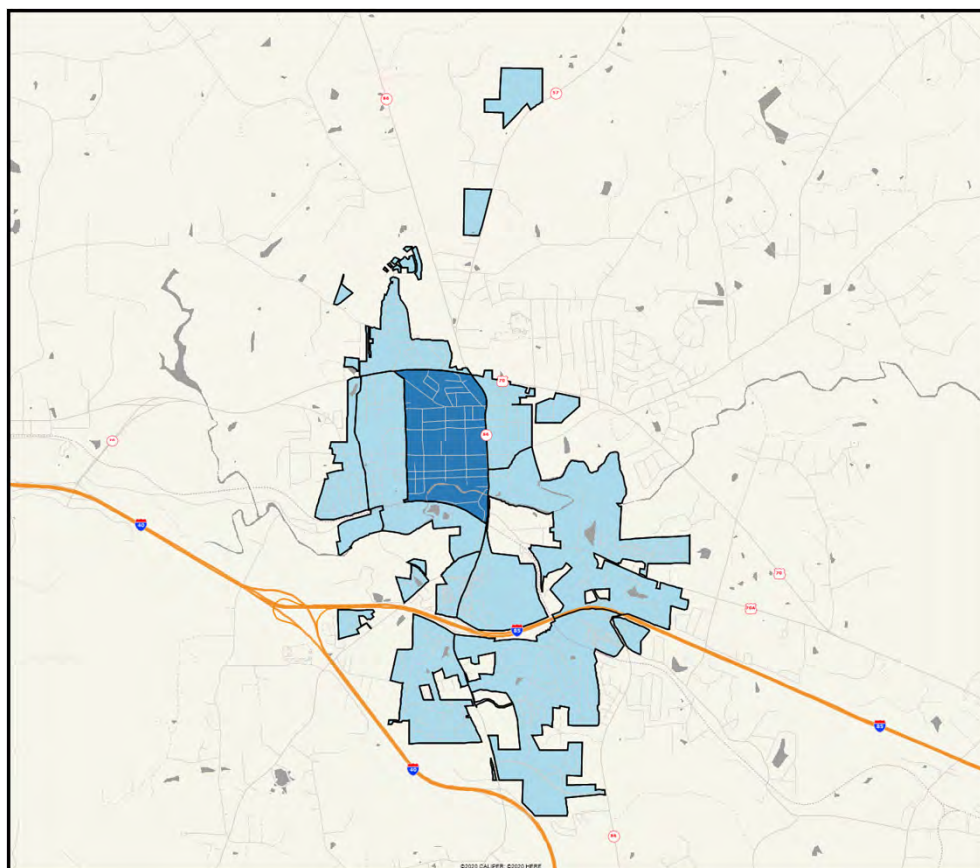
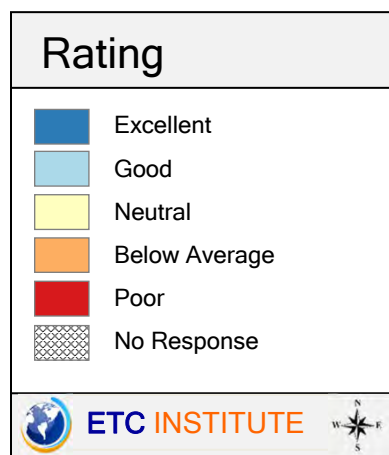
(Shading Reflects the Mean Rating by Census Block Group)



Hillsborough
Community
Survey

Q19-3. As a place to play

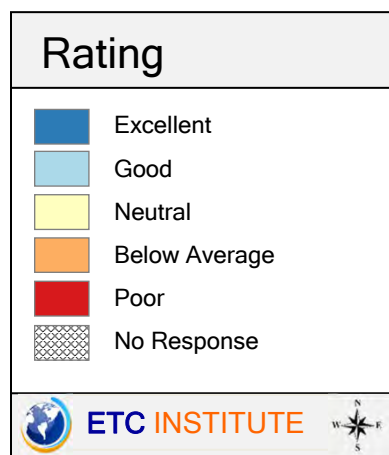
(Shading Reflects the Mean Rating by Census Block Group)



Hillsborough
Community
Survey

Q19-4. As a place to raise children

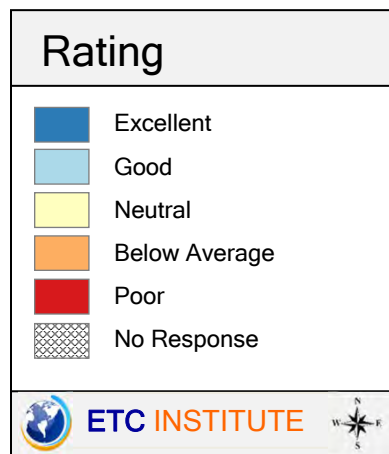
(Shading Reflects the Mean Rating by Census Block Group)



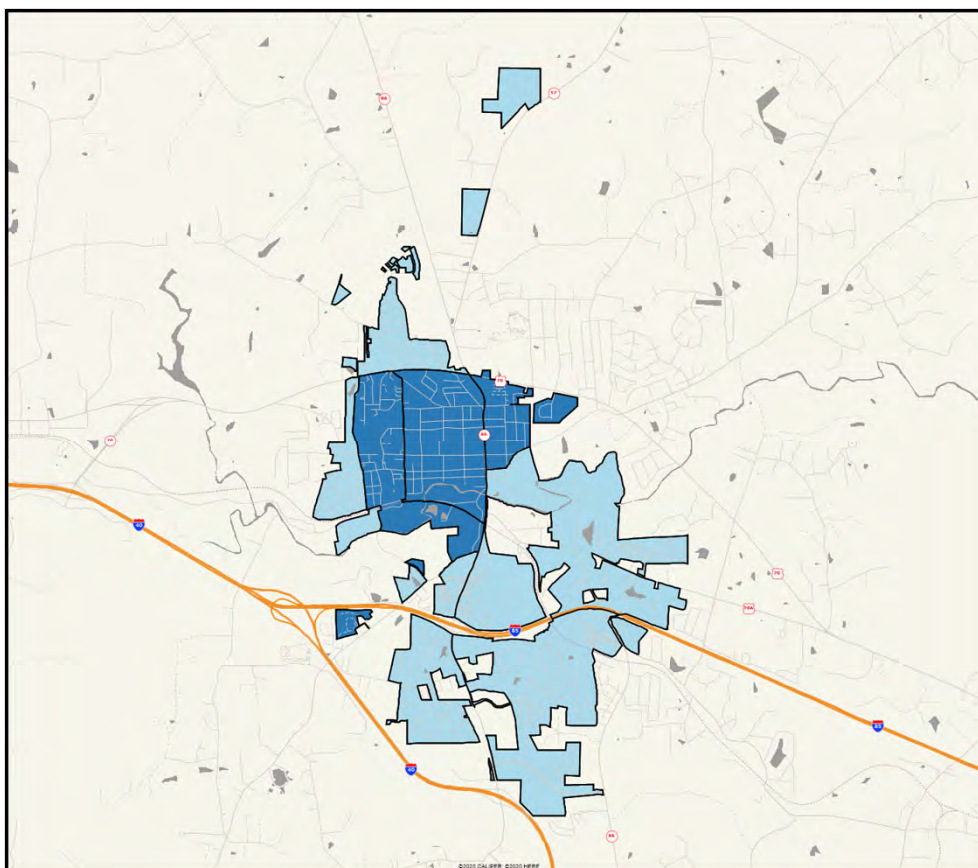
Hillsborough
Community
Survey

Q19-5. As a place to retire

(Shading Reflects the Mean Rating by Census Block Group)

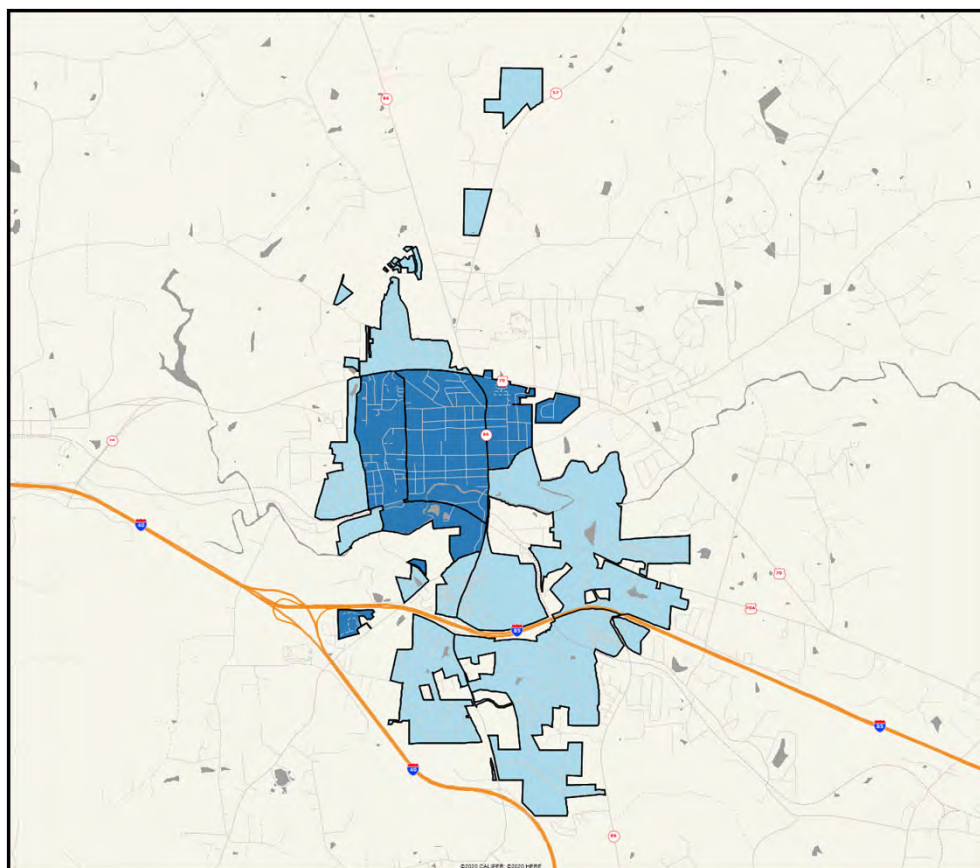
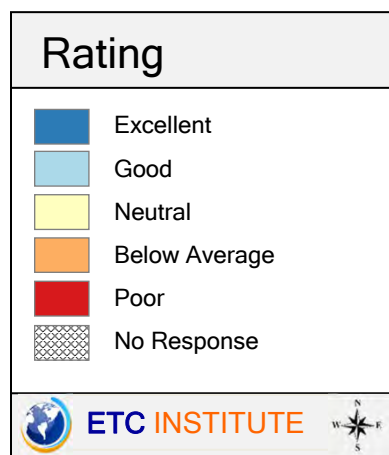


Hillsborough
Community
Survey



Q19-6. As a place to visit

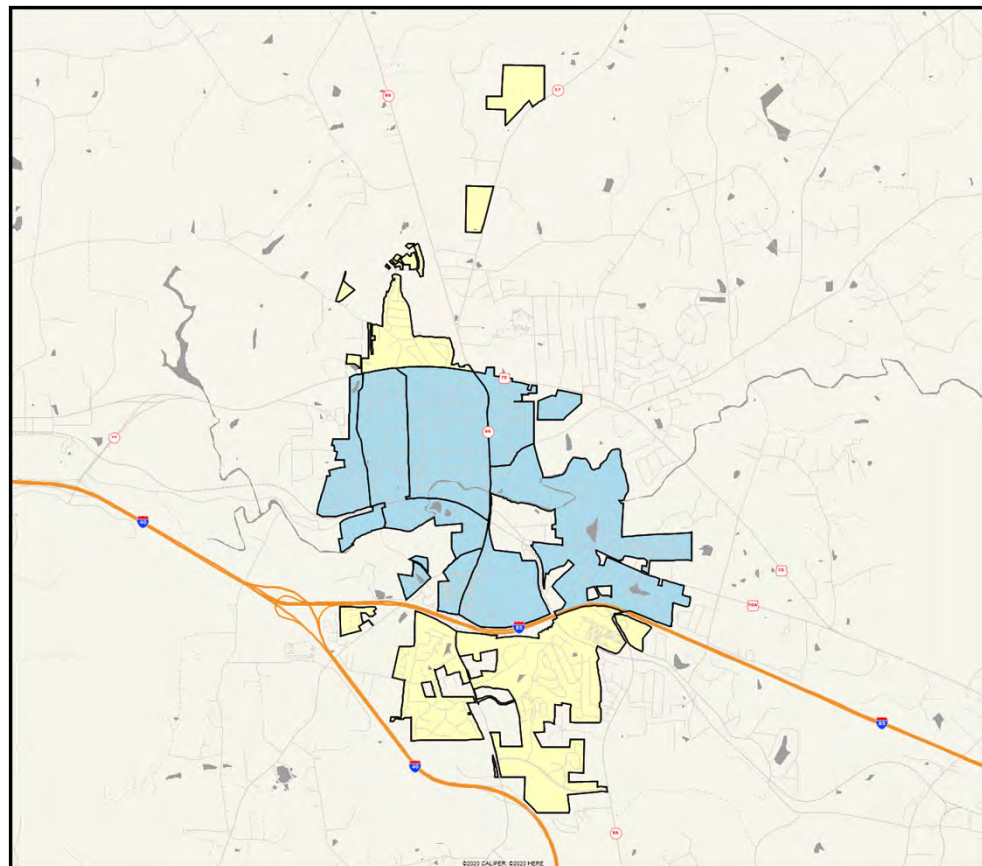
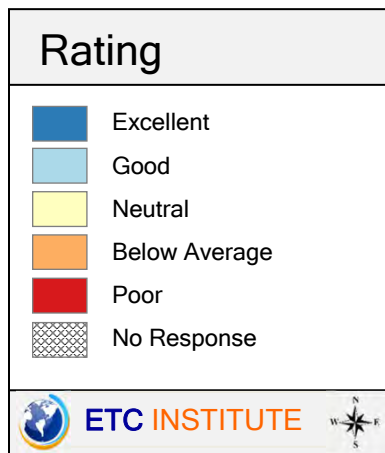
(Shading Reflects the Mean Rating by Census Block Group)



Hillsborough Community Survey

Q19-7. As a place to start a business

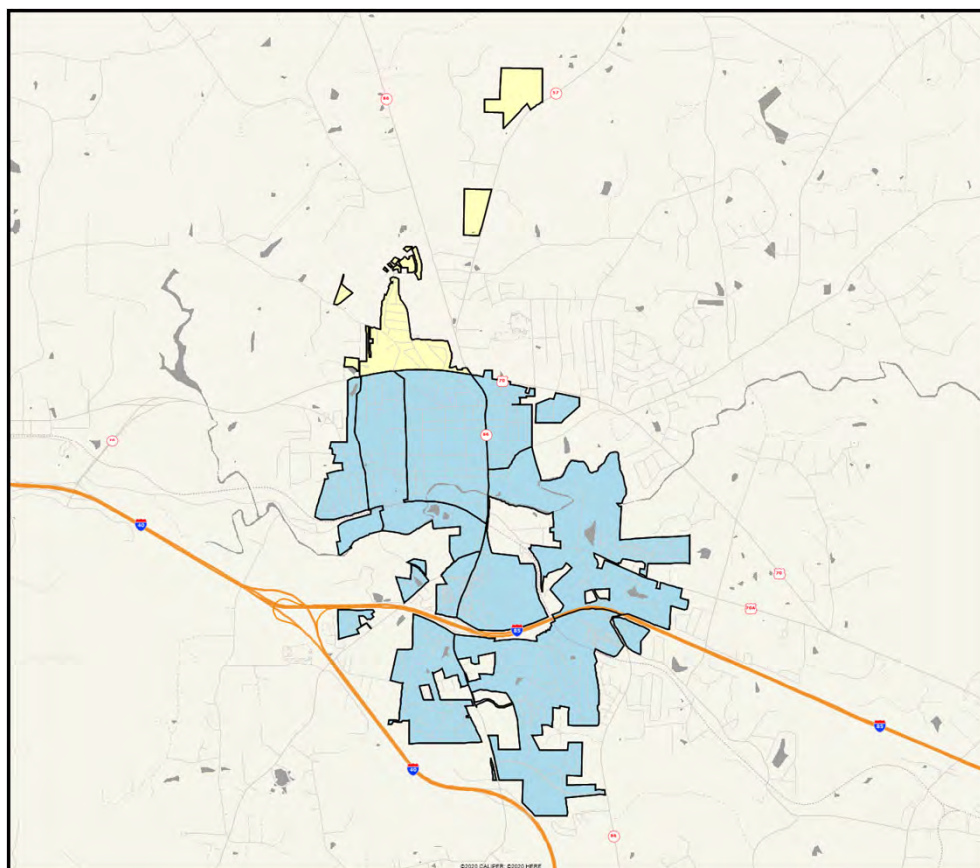
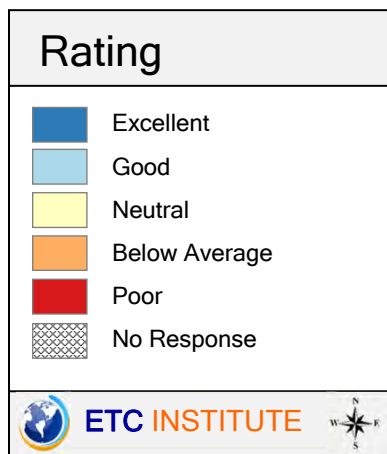
(Shading Reflects the Mean Rating by Census Block Group)



Hillsborough
Community
Survey

Q19-8. As a partner with its residents

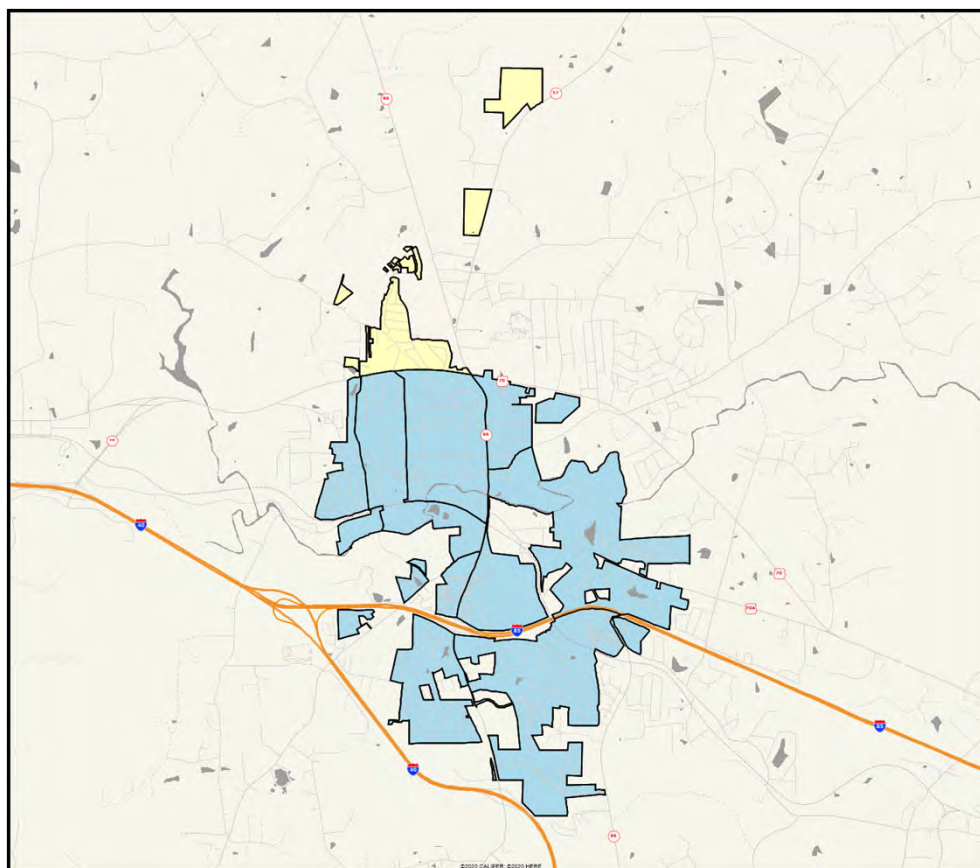
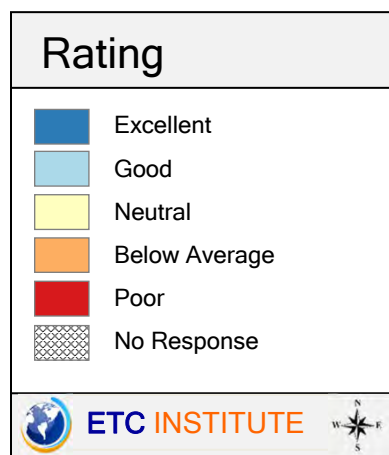
(Shading Reflects the Mean Rating by Census Block Group)



Hillsborough Community Survey

Q19-9. As a town that is moving in the right direction

(Shading Reflects the Mean Rating by Census Block Group)



Hillsborough Community Survey